



Pittwater Waterway

Strategy 2038 (Draft)



northern
beaches
council



Contents

Message from the Mayor	3
Summary	4
Key challenges on the Pittwater waterway	10
Pittwater waterway vision	14
Aspirations for the Pittwater waterway	15
What is the Pittwater Waterway Review?	16
Theme 1. The economics of the waterway	22
Theme 2. Natural environment	26
Theme 3. Natural reserves and recreation	30
Theme 4. Development of the waterway	34
Theme 5. Activating the waterway	38
Theme 6. Waterway regulation	42
Conclusion	46

Message from the Mayor

The Pittwater waterway is an iconic and highly valued natural asset to the Northern Beaches community. Thank you for your input through the extensive community consultation undertaken and feedback on our Pittwater Waterway Review Discussion Paper. You wanted a sustainable approach to managing the waterway, balancing the competing pressures between protecting the marine biodiversity, delicate estuarine habitat, providing opportunities for recreation, access to the offshore community and contributing to the local economy.



Our draft Pittwater Waterway Strategy 2038 (the Strategy) sets out our strategic direction for sustainably managing the waterway for the next 20 years. Our vision is for the Pittwater waterway to, “continue to be a place of natural wonder and beauty. It will be a place that balances the majesty of nature with vibrant and diverse activity. A place for all to enjoy”.

Importantly, we would like to respectfully acknowledge the traditional custodians of these lands and recognise that Pittwater has great significance to the traditional owners.

The strategy recognises the importance of sustainable economic growth while also identifying the need to protect, promote and celebrate our natural environment, address increasing demand pressures and enable greater opportunities for the access, use and enjoyment of the waterway.

We will be working with key state agencies, businesses and the community to deliver these outcomes to sustainably manage the Pittwater waterway for the next twenty years.

A handwritten signature in black ink, appearing to read 'Michael Regan', followed by a horizontal line.

Michael Regan, Mayor

Summary

The Pittwater waterway is iconic and one of the Northern Beaches' most significant natural assets. It fundamentally embodies the spirit and character of the Northern Beaches and makes the area such a beautiful place to live, work and visit.

The Pittwater Waterway Strategy 2038 is our vision for a place that balances the majesty of nature with vibrant and diverse activity. It outlines our key future strategy directions regarding how we sustainably manage the Pittwater waterway.


Our approach is to try to balance the array of diverse and competing pressures ranging from varied recreational use and the demand to increase boat storage, to valuing our delicate estuarine habitats and outstanding environmental setting.

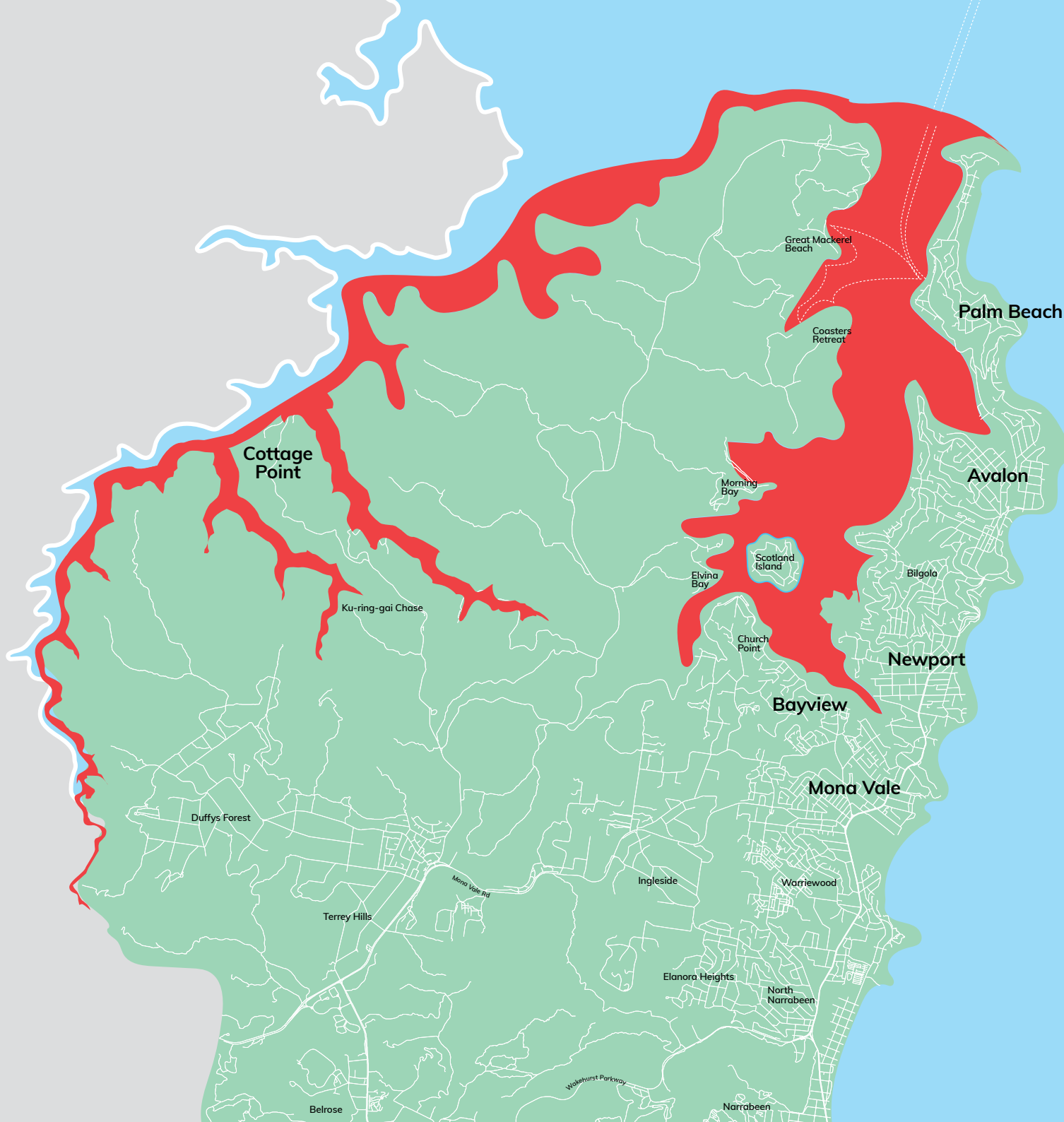
The Strategy is a non-statutory guiding document structured on six themes, with each theme having key strategies and directions.



Theme	Our Objectives	
1	Economics of the waterway	<ul style="list-style-type: none"> Sustainable economic growth balanced with protecting the significance and intrinsic value of the natural environment.
2	Natural Environment	<ul style="list-style-type: none"> Protect, promote and celebrate the unique and valuable natural environment of Pittwater including its extensive ecological diversity and renowned scenic amenity.
3	Natural Reserves and Recreation	<ul style="list-style-type: none"> Manage foreshore reserves in line with community aspirations and changing waterway dynamics
4	Development of the waterway	<ul style="list-style-type: none"> Manage increasing demand in boating, including associated pressure on boat storage and facilities.
5	Activating the waterway	<ul style="list-style-type: none"> Provide a range of diverse opportunities to access, use and enjoy the waterway.
6	Waterway regulation	<ul style="list-style-type: none"> Effectively regulate and manage the Pittwater waterway sustainably and with transparency to meet the needs of the community and emerging demand pressures.



 Study Area



Our Plans

This Strategy provides a long-term vision (20 years) for sustainably managing the Pittwater waterway in response to your priorities.

The Strategy will be supported by our planning framework which provides a platform for achieving our community's vision for the Northern Beaches being – 'a safe, inclusive and connected community that lives in balance with our extraordinary coastal and bushland environment'.

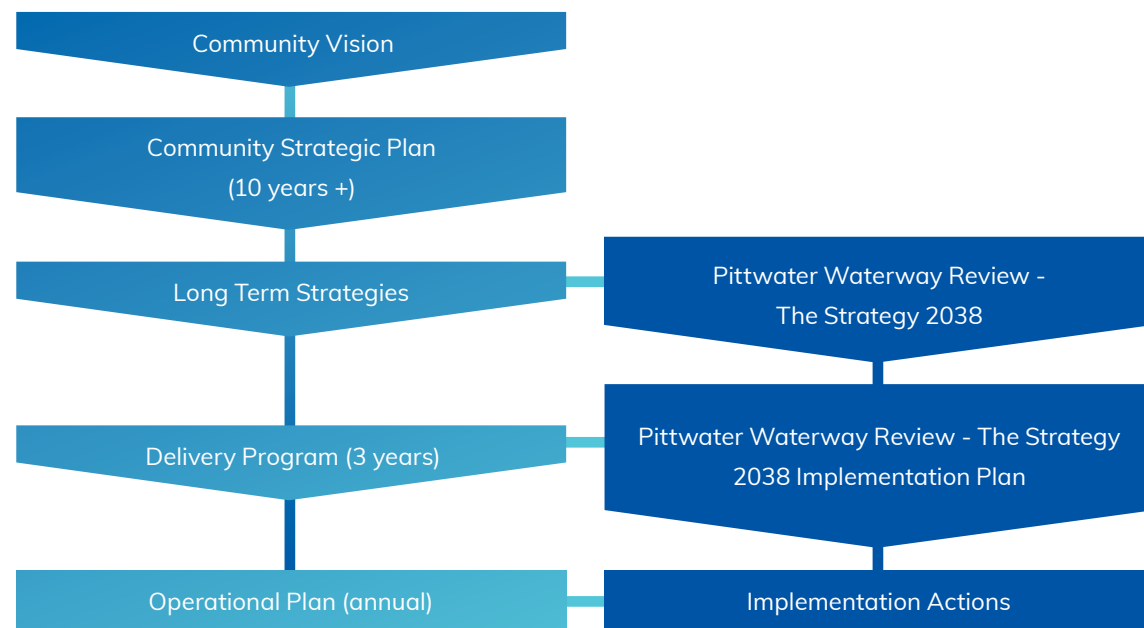


Figure 1: **Community Strategic Plan and
Pittwater Waterway Review - Strategy 2038**

Figure 2: **Strategy Timeline**

Pittwater Waterway Review commences - Initial community consultation	Pittwater Waterway Review - Discussion Paper	Community consultation and outcomes report to council	Pittwater Waterway Strategy (Draft)	Community Consultation	Pittwater Waterway Strategy to Council for adoption
Complete	Complete	Complete	We are here	Late 2018 - Early 2019	Early 2019

NSW Government Land Use Plans

This Strategy also complements the NSW Government's long-term land use strategies for Greater Sydney:

- North District Plan, Greater Sydney Commission (GSC), March 2018
- Greater Sydney Region Plan, A Metropolis of Three Cities Connecting People, GSC



Pittwater Waterway Challenges

We face diverse and competing challenges on the Pittwater waterway

The Hawkesbury/Broken Bay region [which includes Pittwater], has the second highest number of registered recreational and commercial vessels in NSW¹

This region has a predicted growth of an additional 67% or 5,854 boats over six metres between 2009-2026¹

Boat storage space requirements in the region is predicted to increase by 2068 spaces²

Approximately \$127 million of expenditure captured within the study area was related to marine tourism³

[Marina] berths provide 64 on-water spaces for every 1 ha [hectare] compared to seven swing moorings per 1 ha³

Approximately 670,000 visitors every year⁴

A report prepared by Cardno in 2015 identified estuarine risk areas in the Pittwater locality⁵

Traditional landowners have very close ties to the water, with a number of heritage sites within close proximity of the waterway⁵

The Pittwater waterway and its foreshore fringe is governed and controlled by a number of stakeholders including Council and State Agencies resulting in a complex overlay of ownership, management and controls⁵

In 2001, the NSW Parliament completely banned the use of Personal WaterCrafts (PWC) in Sydney Harbour due to noise and their impact on the environment⁵

The Pittwater Waterway has a number of seagrass habitats covering approximately 1,934km²⁶

The chain in swing moorings scours the seabed around the block, causing significant damage to and potential loss of seagrass beds⁷

46,250 more people will live on the Northern Beaches by 2036⁸

¹ NSW Maritime 2010

² HillPDA, 2009

³ HillPDA, 2016

⁴ Pittwater Council, 2015

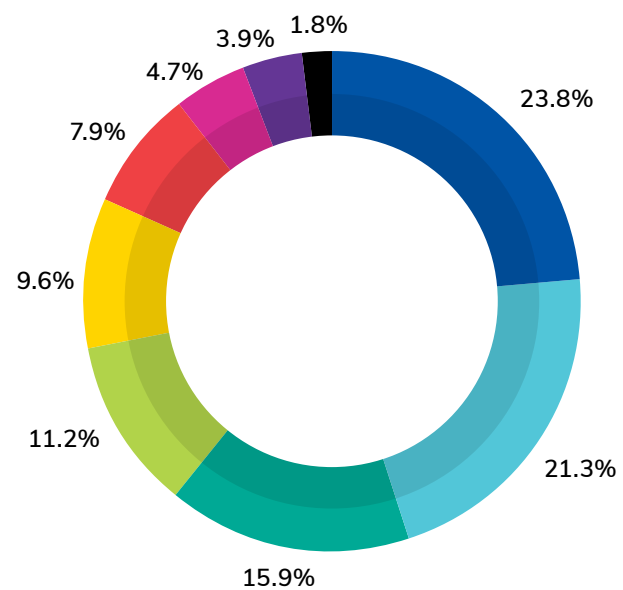
⁵ PWR Discussion Paper, Northern Beaches Council, 2016

⁶ BMT WBM Pty, 2010

⁷ Pittwater Waterway Review (PWR) Discussion Paper, Northern Beaches Council, 2016; Demers, et al., 2013; Maritime Management Centre, 2014

⁸ Northern Beaches Area 2011 to 2016 Analysis, NSW Department of Planning, 2016 NSW Local Government Area Population and Household Projections and Implied Dwelling Requirements

Your single biggest challenge facing the waterway



- Natural Environment
- Access and parking
- Governance and regulation
- Increased boat size
- Moorings
- Other development
- Marinas
- Recreation and tourism
- Economy and employment



On-water boat storage demand pressures

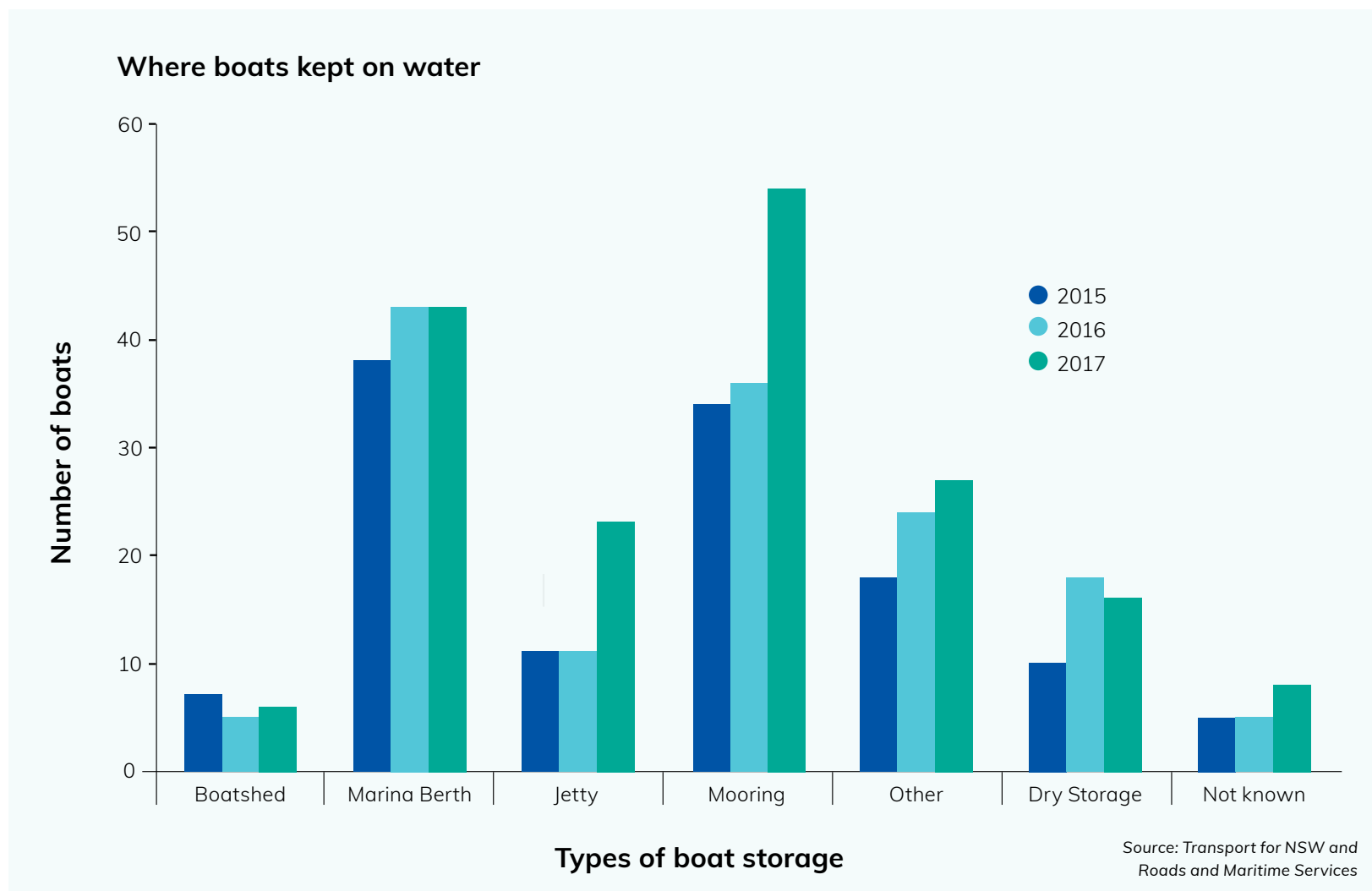


Figure 3: **Boat storage take-up on the Pittwater waterway 2015-2017**

Number of private moorings by area

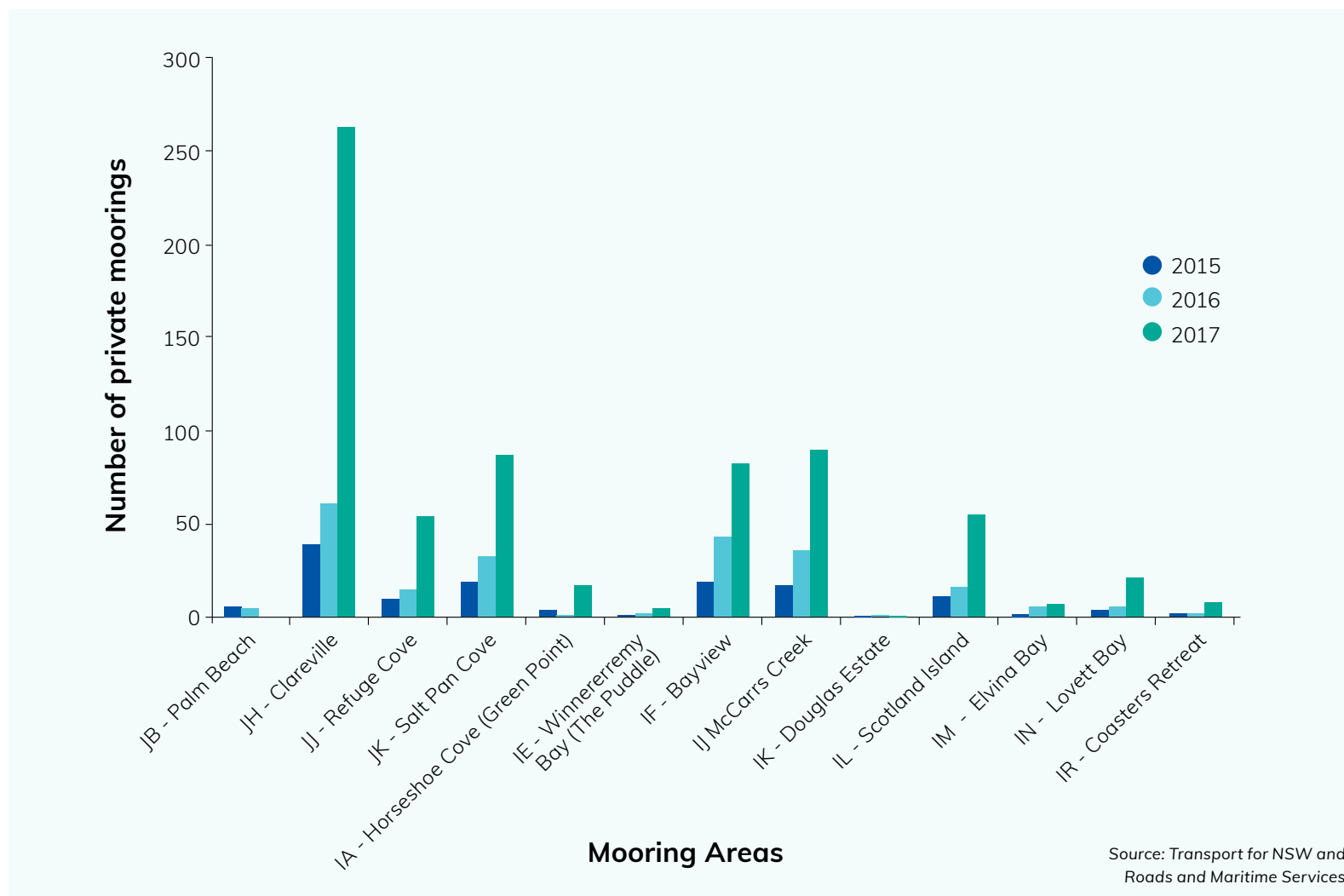
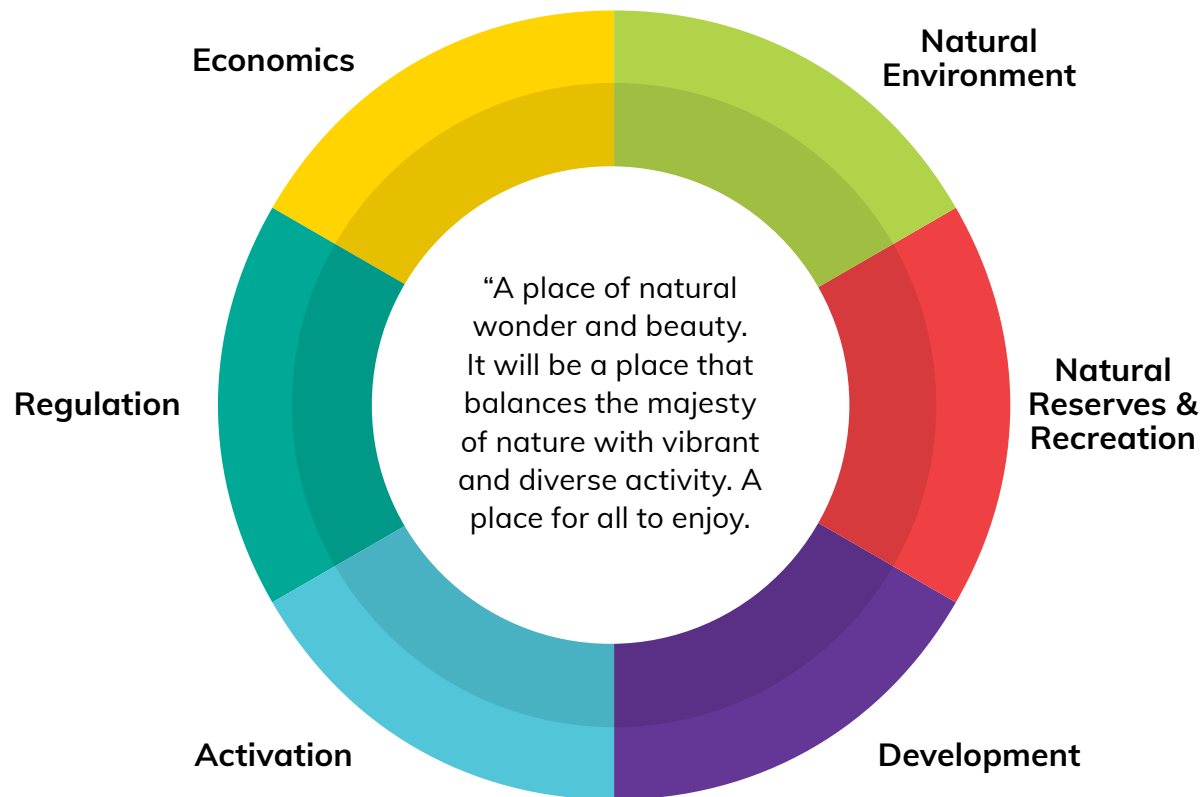


Figure 4: Private Mooring Number

Pittwater Waterway Vision

“A place of natural wonder and beauty. It will be a place that balances the majesty of nature with vibrant and diverse activity. A place for all to enjoy.”



The community developed this vision during consultation that included:

- Two online community surveys
- Mobile phone and Facebook campaign
- Pop-up stalls
- Interviews with key stakeholders
- Nine targeted workshops with key stakeholders
- Drop-in sessions

Aspirations for the Pittwater Waterway

The community was asked to list their aspirations for the waterway.

“ A clean, healthy waterway that maintains its natural beauty, wildlife and habitats and to ensure these unique features are protected and enhanced now and into the future. ”

“ A safe waterway that is accessible for all and caters for a wide variety of activities. ”

“ Ensure the responsible and reasonable use of the waterway now and into the future. ”

“ Assurance that facilities are maintained and improved upon so this wide number of activities can continue and expand in variety. This includes boating, kayaking, paddle-boarding and swimming as well as a number of other activities. ”

“ Allow and promote future development on and adjacent to the waterway to more adequately reflect and be appreciative of the waterway's natural splendour. ”





What is the Pittwater Waterway Review?

The Pittwater waterway is highly valued, locally and regionally, for its varied marine biodiversity, delicate estuarine habitats, unique environmental setting, recreation value, natural picturesque setting, contribution to the local economy and community and means of access for offshore communities. These diverse and competing pressures highlight the need to manage Pittwater sustainably now and into the future.

To achieve this, Council has undertaken a holistic review of the waterway to ensure it is sustainably managed. This Review has sought to identify and assess all issues impacting the waterway and through the focus on sustainability, develop and implement strategies to guide the management of the Pittwater waterway over the next 20 years.

The Pittwater Waterway Review Process



What the review is:

- Promoted by the community, written with the community and developed for the community.
- A strategic analysis of planning controls associated with the Pittwater waterway, including land and water based.
- A strategic document to guide the sustainable management of the Pitt water waterway over the next 20 years.
- A document that will make recommendations for zoning, zone objectives and development control.
- An evidence based strategic planning document that establishes a framework for future planning and decision making associated with the Pittwater waterway.
- A strategic tool to assist the decision making process and recommendation to state government for action.

What the review is not:

- NOT a coastal zone management plan or coastal management plan.
- NOT a document that can require specified state government actions.
- NOT a document that incorporates the coastal fringe, Middle Harbour, Narrabeen or Dee Why Lagoon.
- NOT a Plan of Management as mandated under the Crown Lands Act, 1989 or the Local Government Act 1997.

The Purpose and progress of the Strategy

This strategy sets the strategic framework for the future management of the waterway and allocates specific directions to those responsible for implementing them.-

Stage 1

Pittwater Waterway Discussion Paper provided information and an overview of key issues, with possible strategies developed from studies and initial consultation. The Discussion Paper was reported to Council on 28th March 2017 and placed on public exhibition for six weeks from 1st April to 14th May 2017

The outcomes of the public exhibition of the Discussion Paper were noted by Council on the 27th June 2017. The Outcomes Report and accompanying Council Report forms a bridging document identifying what issues and potential strategies were to move forward into the Strategy

Where we are now

Stage 2

The Pittwater Waterway Strategy sets the strategic framework for future planning and decision making. The Strategy will guide and inform future direction associated with the Pittwater waterway

Our conversation

Phase 1 Initial Consultation	Phase 2 Public exhibition of Discussion Paper	Phase 3 Consultation with responsible internal stakeholders	Phase 4 Exhibition of draft PWR Strategy
<ul style="list-style-type: none"> - Workshops with internal working group, reference groups, internal and external stakeholders - Online survey - Advertising campaign - Pop-up stall - Interviews with key stakeholders and service providers - Pittwater Waterway Review (PWR) Yoursay page 	<ul style="list-style-type: none"> - Advertising campaign including public notices in <i>Manly Daily</i> and on social media - Targeted email drop and e-newsletter notification - Drop-in sessions - Pop-up stalls - Updates on PWR Yoursay page 	<ul style="list-style-type: none"> - One-to-one discussions with responsible internal stakeholders on the draft Pittwater Waterway strategy 	<ul style="list-style-type: none"> - Advertising campaign including public notices in <i>Manly Daily</i> and on social media - Targeted email drop and e-newsletter notification - Drop-in sessions - Pop-up stalls - Updates on PWR Yoursay page

Themes and strategy direction

1

Economics of the waterway

2

Natural Environment

3

Natural Reserves and Recreation

4

Development of the waterway

5

Activating the waterway

6

Waterway regulation





Theme 1.
Economics of
the Waterway



Our Objective

Sustainable economic growth balance with protecting the significance and intrinsic value of the natural environment.

Context

Council aspires to create a thriving and vibrant local economy where traditional and new industries are supported and local career, training and education opportunities are expanded – especially for young people (Shape 2028). 51% of employed residents live and work in the study area and the tourism sector alone employs 10% of the former Pittwater LGA⁹. The tourism sector plays a significant role in the economics of the study area with 670,000 visitors to the area every year significantly benefiting the local economy⁹.

The community has largely acknowledged that sustainable economic growth should be supported and is important in terms of local employment. Importantly, the clear message is for well-managed, balanced and sustainable growth that recognises the intrinsic value of the natural environment.

Potential opportunities for low-scale activation of the waterfront and public realm is likewise an important issue for the community with support for small-scale cafés and restaurants and the need to recognise Church Point locality as a multi-use hub for many waterway and foreshore users.

What you told us

- Sustainable economic growth is important, especially in terms of local employment opportunities, however the community is concerned with large-scale economic development and associated impacts, such as traffic generation, parking constraints and impacts on the natural environment. Activating town centres will provide greater local job opportunities and reduce the need to commute out of the area for work.
- Tourism is important to the community. Growth in this sector needs to be well-managed and balanced to ensure the natural environment and local visual aesthetics and amenity are not adversely impacted upon.
- Small-scale food and beverage businesses, in strategic foreshore areas, are supported.
- Concern over large-scale development at Church Point. It is important to recognise that during the community engagement of this review, there was a level of uncertainty within the community given proposed development at Church Point and significant work undertaken as part of the Church Point Upgrade. The new seawall, pedestrian boardwalk, realignment of the road and construction of the car park has been completed and the reconstruction of the Church Point Cargo Wharf has just commenced.

⁹ Pittwater Council, 2015; HillPDA 2016

Strategies

- Plan for, promote and manage sustainable tourism associated with the Pittwater waterway.
- Low-scale activation of strategic foreshore locations.
- Low-scale activation of the Church Point public realm/wharf locality.

Directions

1. Commence a Northern Beaches Destination Management Plan to include the Pittwater waterway.
2. Consider additional signage, web-based information and publications highlighting areas of interest, services and facilities in the Pittwater waterway.
3. Encourage tourism accommodation initiatives with a focus on eco-tourism.
4. Encourage well-managed waterway-focused events.
5. Continue to implement the Conservation Management Plan, 2015 for Currawong
6. Actively encourage National Parks and Wildlife Service to commence a comprehensive management plan for the Basin.
7. Identify appropriate foreshore locations for low-scale cafés and restaurants accessible via sustainable and active transport networks and subject to sensitive development controls.
8. Investigate opportunities to initiate place-making initiatives to improve place outcomes at Church Point Wharf locality.
9. Maintain and ensure access to commercial opportunities around the Pittwater waterway.
10. Maintain the local economy that is based on the provision of recreational activities.



Theme 2.

Natural Environment



Our Objective

Protect, promote and celebrate the unique and valuable natural environment of Pittwater including its extensive ecological diversity and renowned scenic amenity.

Context

Council aspires to protect the natural and built environment from the risk and impacts of global and local pressures (Shape 2028). The Pittwater waterway is one of the Northern Beaches' most significant natural assets. Clearly, scenic amenity and preservation of Pittwater's natural environment is a significant issue for the community, capturing the highest number of responses and comments during consultation. The protection of our delicate waterway habitats, ecological diversity and bushland are a high priority and intrinsically linked to sustainably managing the impacts of urbanisation, waste management, our resilience to natural hazards and climate change risk.

What you told us

- The aquatic and terrestrial environments are equally important and highly valued by the community from a scenic amenity and ecological diversity perspective.
- Climate change risk and adaptation is an important issue and must be expanded upon within the Strategy.
- Waste management and illegal dumping are critical issues impacting the health of the waterway and local catchment.

Strategies

- Preserve the scenic amenity and natural environment of Pittwater as a unique resource.
- Understand climate change risk and adapt to meet the challenges.
- Reduce the impact of urbanisation on water quality.
- Promote increased bush care and management and protect ecological diversity.
- Improve environment protection to protect our delicate waterway habitat.
- Improve waste management to reduce impact of urbanisation on water quality.

Directions

1. Lobby marinas to adopt the Clean Marina accreditation program, Fish Friendly Marina Certification Program in Pittwater and use sea-bins or SQID (Storm Quality Improvement Device).
2. Consider opportunities to make publicly available information regarding threatened species, populations and ecological communities known to occur in Pittwater.
3. Consult with NSW Marine Estate Management Authority (MEMA) on activities generating the highest threat to our environmental assets in Pittwater and the relevant management initiatives proposed by MEMA.
4. Investigate with the Department of Primary Industries (DPI Fisheries) establishing a 'no-go zone' protecting endangered seagrass habitats within the study area.
5. Investigate with DPI Fisheries the feasibility and funding for Fish Habitat enhancement projects and Reef Ball trials.
6. Consider risk management strategies to manage the impacts of extreme rainfall events resulting in flooding to estuary communities.
7. Develop and expand environmental education campaigns.
8. Strengthen environmental protection provisions in the waterways locality in Council's DCP.
9. Lobby state agencies to investigate provisioning for additional public waste pump-out facilities for the boating community.



Theme 3.

Natural Reserves and Recreation



Our Objective

Manage foreshore reserves in line with community aspirations and changing waterway dynamics.

Context

Council aspires to create welcoming, accessible and affordable private and public places that foster good health and social interaction (Shape 2028). The Pittwater waterway is highly valued for its recreational value for both active and passive enjoyment on the water and foreshore locations. Council has the care and control of public reserves in foreshore locations.

Overall, the community indicated that they are generally satisfied with public reserves, recreational areas and associated facilities within the study area. They highlighted opportunities for greater public access to foreshore reserves, a continuous foreshore pathway, improved facilities at foreshore reserves, especially associated with recreation areas, and the need to reduce conflict between commercial and recreational fishing.

What you told us

- Generally satisfied with recreational facilities, but improvements are required, especially in relation to community access to foreshore areas.
- Support the concept for a continuous foreshore path.
- Varied and diverse opinions in relation to commercial and recreational fishing. Approach is to manage and reduce user conflicts between each group.

Strategies

- Continue management of foreshore reserves in line with community expectations and demand pressures.
- Increase foreshore accessibility and connectivity, including all-ability access.
- Advocate for sustainable use of resources.

Directions

1. Audit existing foreshore reserves to identify opportunities for increased public access
2. Investigate establishing a continuous foreshore path, including boardwalks, around the Pittwater waterway including opportunities to link into the Northern Beaches Coast Walk
3. Advocate for sustainable fishing practices within the study area and compliance of recreational fishing licences, rules and regulations
4. Promote best practice fishing through a link to DPI Fisheries on Council's website.



Theme 4.

Development of the waterway



Our Objective

Manage the increasing demand in boating, including associated pressure on boating storage and facilities.

Context

Council aspire to be leaders in managing our resources sustainably and for the long term to ensure that development is balanced with our lifestyle and environment (Shape 2028). The trend of increasing boat ownership and the associated impacts of storage and facilities to support this growth is a critical issue facing the waterway. This becomes increasingly important in settings such as the Pittwater waterway where options to support growth must be undertaken in a sustainable manner such that the natural environment and marine habitats, water quality, water safety and local amenity are not adversely impacted upon.

The options to address boating growth and the necessary services and facilities to support it are wide and varied, including:

- **Moorings** - including strategies on how to efficiently and effectively manage moorings, mooring types, trials and mooring licences.
- **Marinas** - expansion in suitable locations and alternative dry storage options.
- **Alternative boat storage options** - investigating opportunities for increased dry storage for a range of vessel types including boats, kayaks, dinghies and smaller watercraft.

What you told us

- Alternative boat storage options are important and needs to include a broad range of boats and watercraft.
- Community concerned about the age and deterioration of boating facilities, such as jetties, wharfs, boat ramps and tie-up facilities.
- Moorings are a major issue and represent an opportunity to meet increasing demand for boat ownership through more efficient and effective managing and licencing systems.
- On balance support for marina expansion in appropriate locations with development permissible only with consent.

Strategies

- Maintain existing mooring areas within Council's DCP with no further expansion and explore opportunities to increase mooring density through alternative mooring design approaches and efficient management practices in collaboration with TfNSW and RMS.
- Advocate for improvements to the mooring licence and management system.
- Encourage environmentally sensitive mooring locations to be protected through improved mooring design.
- Better advocate for offshore residents to be considered for priority access to moorings in offshore locations.
- Boating infrastructure and facilities to address projected boating demand.
- Support the provision of dry boat storage as an alternative storage approach.
- Provision of storage options suitable for small recreational water vessels to address demand.
- Expand the W2 zone, subject to a strategic sites assessment, to permit, with consent, sustainable marina expansion.



Directions

1. Review Council's DCP controls to achieve the outcomes of this Strategy.
2. Retain the maximum number of moorings in Pittwater as 3641 in Council's DCP. Only review cap subject to improved mooring densities and improved management/enforcement of the mooring licence system.
3. Encourage RMS to consolidate mooring fields to improve the density of on-water storage and explore undertaking with TfNSW a multi vessel mooring trial on Pittwater in partnership with local marinas.
4. Lobby RMS to undertake a comprehensive review of the mooring licence system and introduce annual seaworthy checks with removal of boats that do not satisfy the mooring licence criteria.
5. Encourage RMS to investigate initiatives and opportunities for the conversion of swing moorings to environmentally friendly systems, with emphasis on mooring fields located in seagrass areas.
6. Advocate for RMS to investigate eligibility criteria for mooring applications in offshore locations to ensure that offshore residents are provided access opportunities.
7. Review existing procedures for Pittwater boat tie-up facilities, with a focus on flexible usage, increasing enforcement, improved signage and investigation of new facilities in high demand areas.
8. Update Council's web content to include related services and facilities for Pittwater such as servicing facilities, public amenities, leisure facilities and passenger access points.
9. Investigate options for a new boat ramp on Pittwater to cater for medium to larger boats.
10. Investigate sites for dry stack and on-trailer boat storage facilities in appropriate locations and seek funding from TfNSW and RMS to support initiatives.
11. Identify locations for additional dinghy, kayak and SUP storage for mooring access and recreational users and opportunities for shared dinghy use/rentals. Seek funding for additional storage from TfNSW and RMS.
12. Explore opportunities to retrofit and recondition traditional seawalls to enhance ecosystem resilience.

Theme 5.

Activating the waterway



Our Objective

To Provide a range of diverse opportunities to access, use and enjoy the waterway.

Context

Council aspires to connect people...through seamless transport and innovative technologies (Shape 2028). Accessing and using the waterway is a major priority for the community. It incorporates considerations of linkages and connectivity, parking facilities for car, boat and trailers and on-water navigation issues.

One of the big issues relates to traffic and parking, including trailer and boat parking and dog off leashed access areas. The community is seeking improved parking facilities in the areas surrounding the waterway.

What you told us

- Parking continues to be an important issue with 72% of survey respondents being dissatisfied with parking facilities.
- Improve public access to and along the foreshore, including looking at options for a continuous foreshore path, and align with sustainable and access transport networks.
- Trailer boat parking on public roads continues to be an issue for the community as does the use of personal watercraft (PWC).

Strategies

- Ensure parking provision is appropriate and managed to respond to demand, community needs and the local environment.
- Improve public access to the Pittwater waterway and along the Pittwater foreshore.
- Promote coordinated and integrated public transport access to the Pittwater waterway.
- Promote opportunities to increase active transport networks to and around the Pittwater waterway.
- Effective management approach to boat trailer parking.
- Effective management approach for the use of PWC.

Directions

1. Implement and monitor the Palm Beach Parking Demand Management Strategy
2. Investigate parking provision at marinas, boating facilities, foreshore reserves and boat trailer parking facilities.
3. Coordinate public access thoroughfares with a focus on improving public access to Pittwater foreshore.
4. Encourage TfNSW to integrate public transport timetables to ensure point-to-point transport including ferries, investigate additional ferry connections throughout Pittwater and expand on-demand and car-sharing initiatives.
5. Investigate opportunities for new bike routes that connect key localities to and along the foreshore.
6. Consider risk management strategies to manage the impacts of extreme rainfall events resulting in flooding to estuary communities.
7. Coordinate active transport networks and the Northern Beaches Coast Walk with the feasibility of a Pittwater foreshore walk
8. Develop and implement a Northern Beaches Council boat trailer impounding policy, including the erection of appropriate signage, seek funding from TfNSW and investigate other parking schemes for boat trailer parking.
9. Lobby RMS to undertake a review and investigate the impacts of PWC and consider appropriate actions to mitigate impacts through restrictions if necessary.



Theme 6. Waterway regulation



Our Objective

Effectively regulate and manage the Pittwater waterway sustainably and with transparency to meet the needs of the community and emerging demand pressures.

Context

We want to take a best practice approach to planning and decision making related to the Pittwater waterway. The Review identified that the Local Environmental Plan and Development Control Plan need strengthening to support better outcomes for the waterways and this is captured in the strategies and directions.

The Pittwater Waterway Strategy 2038 is non-legislative and not mandated by legislation.

Collaboration between State Government agencies, internal Council business units and private stakeholders will be essential for the effective delivery of the strategies and directions.

In relation to Council's Local Environmental Plan, there is a need to consider zone boundary changes with specific reference to the zone W2 Recreational Waterways in order to sustainably manage the increase in boat ownership and subsequent boat storage demand.

The approach will consider and investigate appropriate locations for sustainable marina expansion with development consent. It will consider water space efficiency of marina berths, which equate to a 64 berth to 7 moorings ratio per ha, and the need to sustainably manage boat storage demand pressures and mitigate associated environmental, aesthetics and neighbourhood impacts through the strategic site assessment and Development Application process.

What you told us

- The strategies to expand the W2 zone around marinas whilst relinquishing equal mooring numbers generated high interest at all consultation phases. On balance, there was support for this approach but only in appropriate locations and only with development consent.
- Avalon Sailing Club and BYRA explained that the adopted Pittwater Local Environmental Plan 2014 has limited their ability to undertake development ordinarily incidental or subsidiary to clubs associated with recreational activities on the waterway.
- RMS advised that they will not be extending the current 'No Wash Zone' limit but will focus on increasing education and awareness of wash, as well as increasing patrols and enforcement to address its impacts. However, wash free zones and safety on the water are an important issue to the community.

Strategies

- Effective governance and compliance of the Pittwater waterway and adjacent foreshore areas.
- Council's Local Environmental Plan to reflect and achieve the outcomes of the Pittwater Waterway Review.
- Council's DCP to reflect and achieve the outcomes of the Pittwater Waterway Review.
- A safe waterway for all to enjoy.
- Increased community education and awareness of waterway and boating matters.

Directions

1. Undertake a Coastal Management Program in accordance with the requirements of the Coastal Management Act 2016 utilising the community engagement outcomes of the Pittwater Waterway Review.
2. Continue to ensure compliance on and adjacent to the waterway, investigate illegal foreshore works and unauthorised structures over the water at Coasters Retreat.
3. Undertake a strategic sites assessment and planning proposal to amend the LEP to expand the W2 zone in appropriate locations to permit, with development consent, sustainable marina expansion. Any additional marina berths are subject to equal number of moorings relinquished.
4. Investigate whether mooring pens should be prohibited in the W1 zone.
5. Undertake a planning proposal to the LEP for the inclusion of dry stack boat storage facilities to be permitted with development consent in zone IN2 Light Industrial; an Additional Permitted Use for Avalon Sailing Club and BYRA to read: Development ordinarily incidental or ancillary to clubs associated with recreational activities on the waterway is permitted with development consent and for the inclusion of small-scale cafés and restaurants on the waterfront as permissible with development consent.
6. Review Council's DCP controls, including section D15 – Waterway locality in accordance with the outcomes of the Pittwater Waterway Review.
7. Encourage RMS to extend Pittwater's wash free zone north of Longnose Point, Stokes Point and Dark Gully to minimise the impact of boats on other recreational activities and the environment and review boat license and training requirements.
8. In consultation with Fire & Rescue NSW, investigate the availability of foam on the Pittwater fire tender for marine fires and investigate the potential implications on water quality.
9. Investigate waterway education campaigns to raise environmental awareness, impact of climate change and water safety.



Conclusions

The strategies and directions outlined in Pittwater Waterway Strategy 2038 will support the sustainable management of the Pittwater waterway for the next twenty years.

An implementation program will commence and essential to this is the commitment and coordination of State Government agencies, internal business units, local businesses and the community.

Our vision for this unique and valued natural resource is central to the objective of this Strategy, to “continue to be a place of natural wonder and beauty...a place that balances the majesty of nature with vibrant and diverse activity. A place for all to enjoy.”

**Have Your Say on the draft Pittwater
Waterway Strategy 2038**

at yoursay.northernbeaches.nsw.gov.au





northern
beaches
council