

Source: <http://maps.six.nsw.gov.au>



PLANNING PROPOSAL
No's 1294-1300 Pittwater Road and No's 2-4 Albert Street, Narrabeen

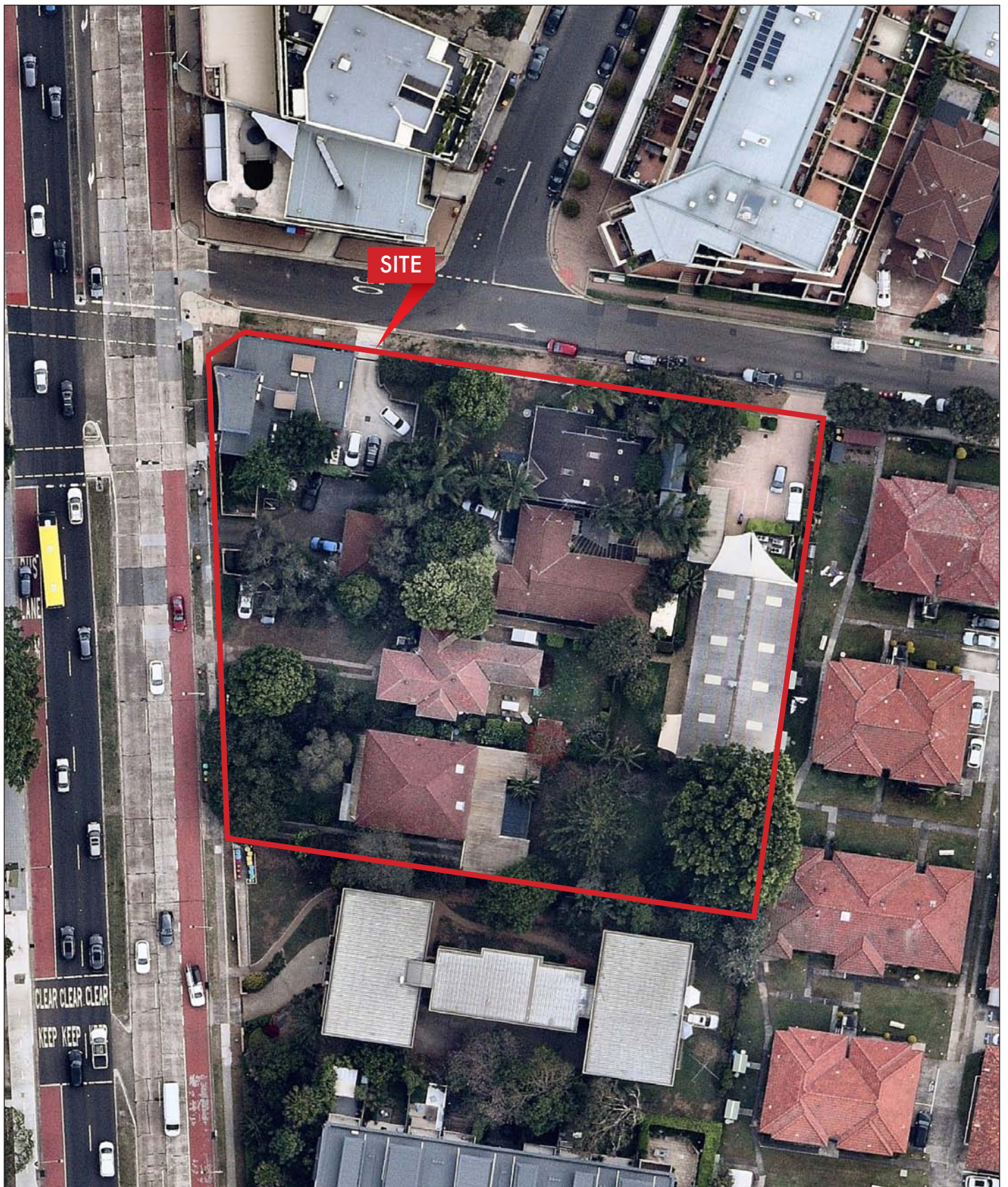
FIGURE 1
Location

Prepared For - Highgate Management Pty Ltd



No's 1294-1300 Pittwater Road and No's 2-4 Albert Street, Narrabeen

Prepared For - Highgate Management Pty Ltd

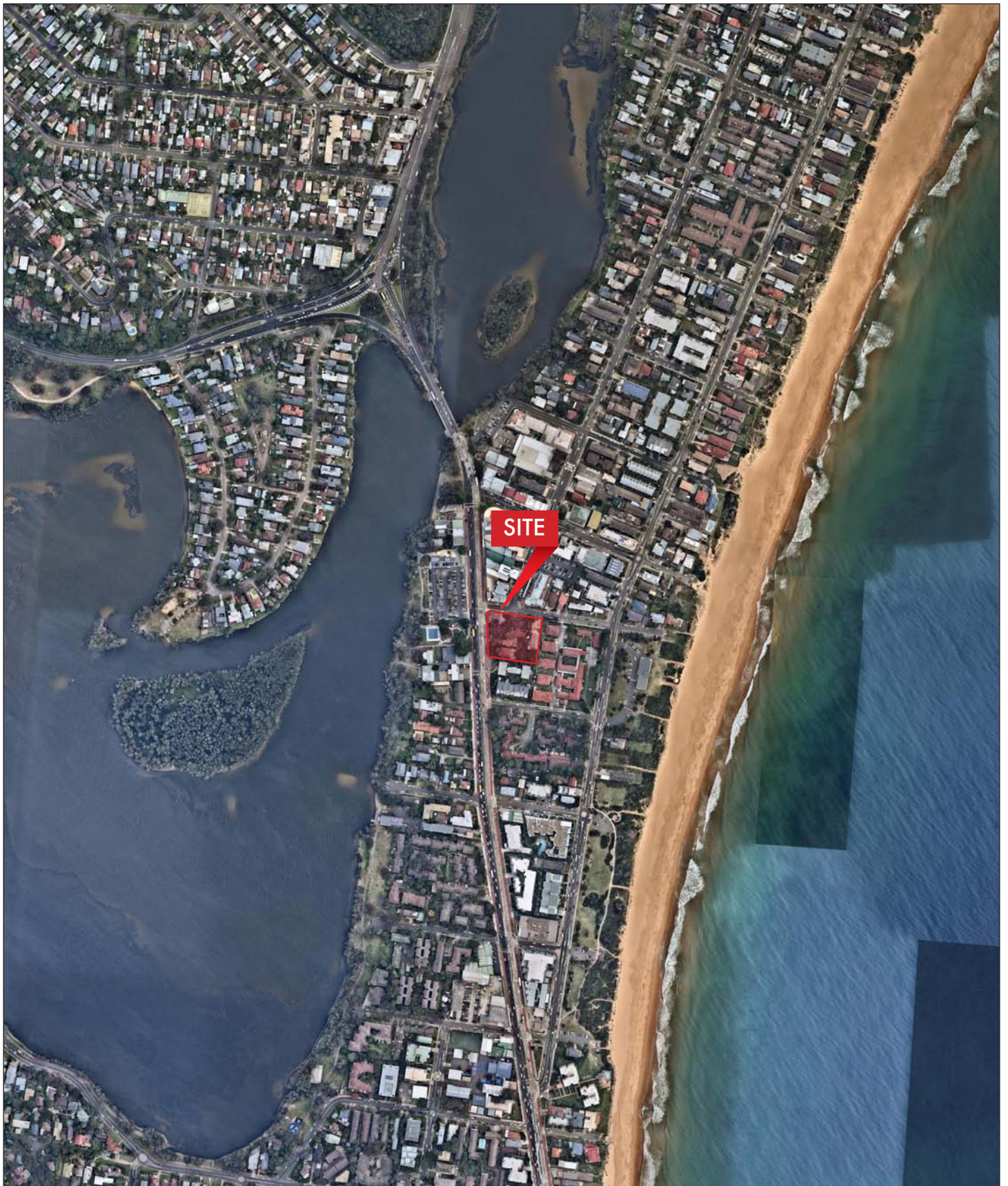


Source: NearMap 2 Nov 2018

PLANNING PROPOSAL
No's 1294-1300 Pittwater Road and No's 2-4 Albert Street, Narrabeen

FIGURE 3A
Aerial Photo - Detail

Prepared For - Highgate Management Pty Ltd

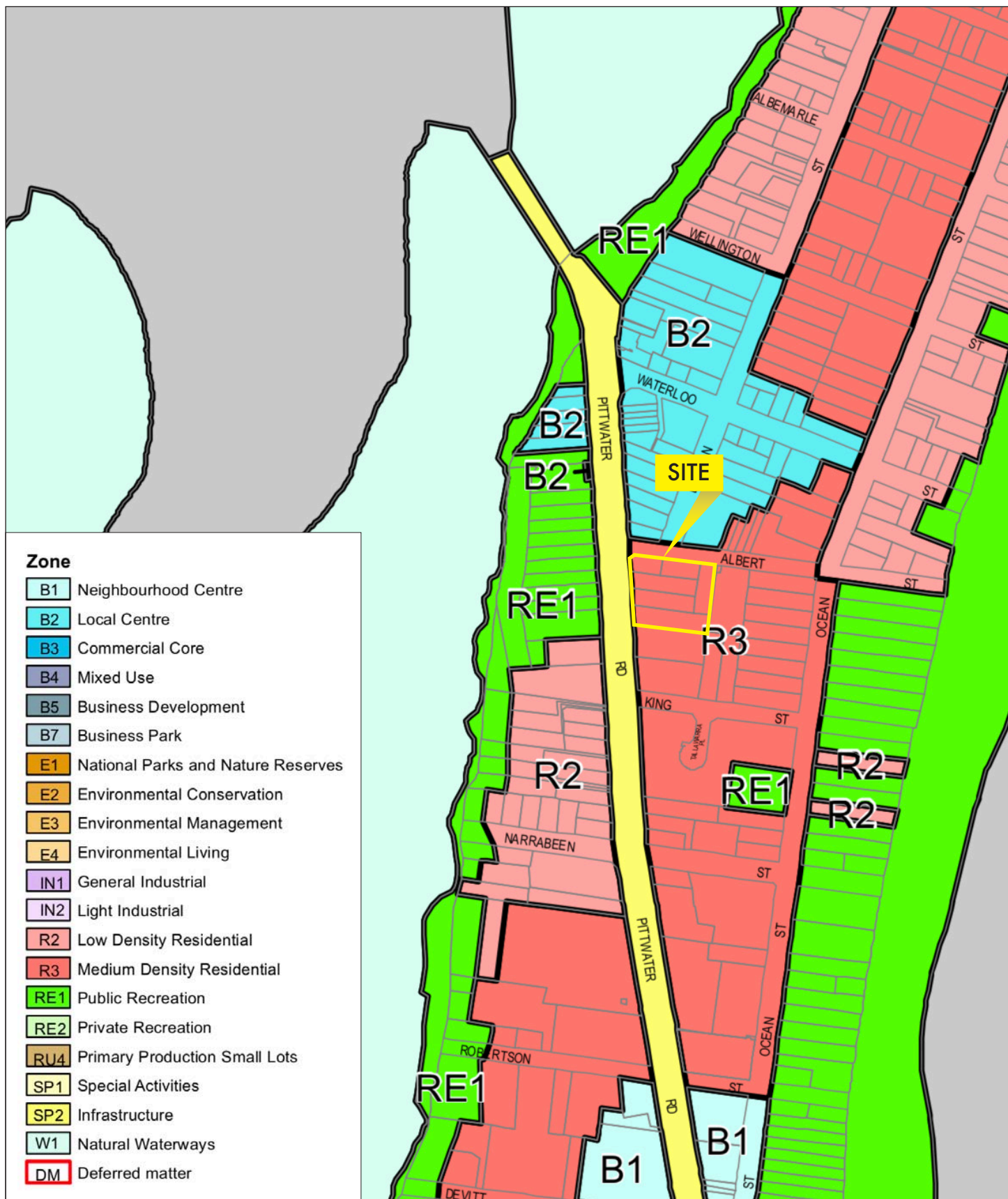


Source: NearMap 2 Nov 2018

PLANNING PROPOSAL
No's 1294-1300 Pittwater Road and No's 2-4 Albert Street, Narrabeen

FIGURE 3B
Aerial Photo - Wider Area

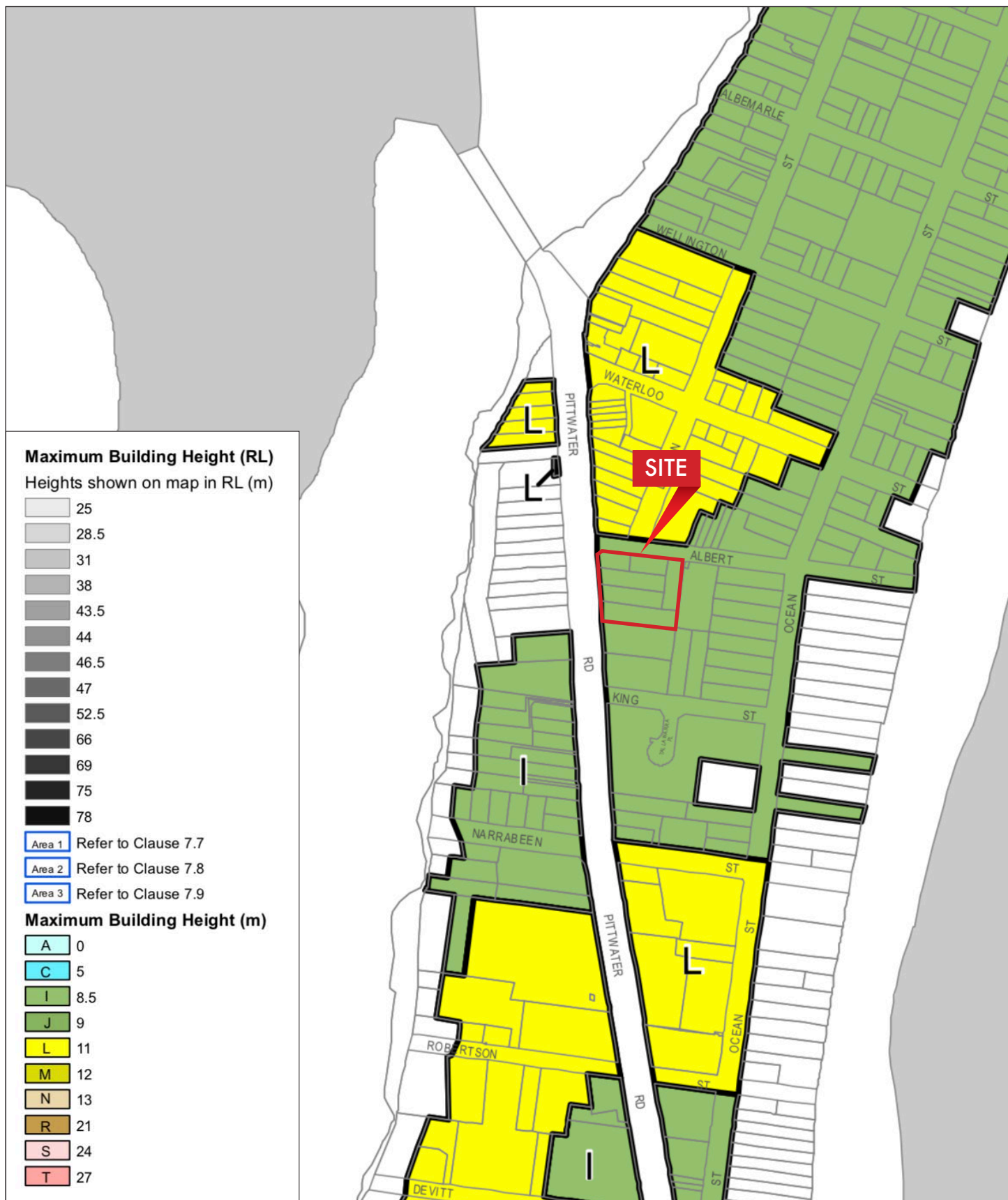
Prepared For - Highgate Management Pty Ltd



PLANNING PROPOSAL
No's 1294-1300 Pittwater Road and No's 2-4 Albert Street, Narrabeen

FIGURE 4A
Zoning Map - Warringah LEP 2011

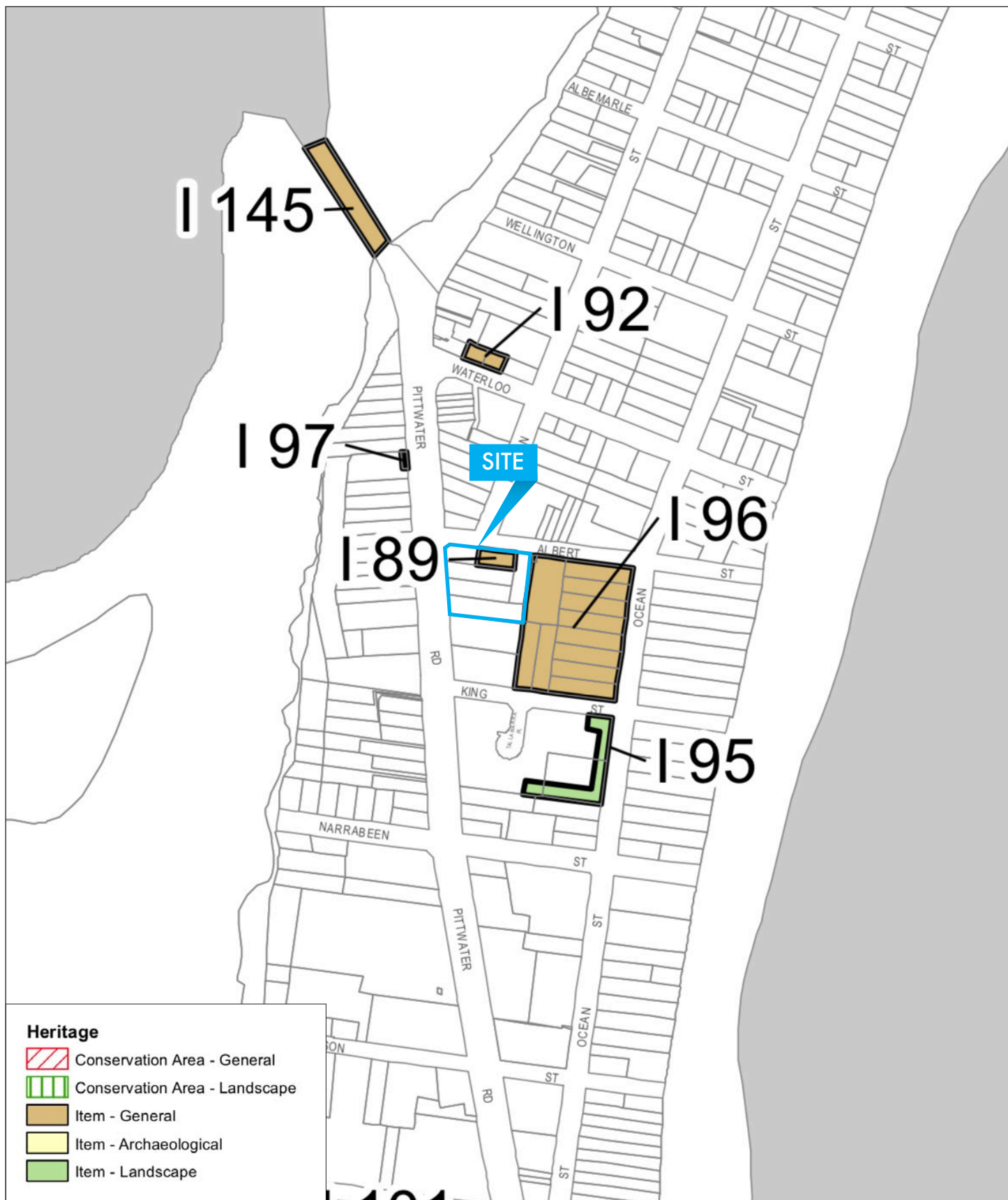
Prepared For - Highgate Management Pty Ltd



PLANNING PROPOSAL
No's 1294-1300 Pittwater Road and No's 2-4 Albert Street, Narrabeen

FIGURE 4B
Height of Buildings Map - Warringah LEP 2011

Prepared For - Highgate Management Pty Ltd

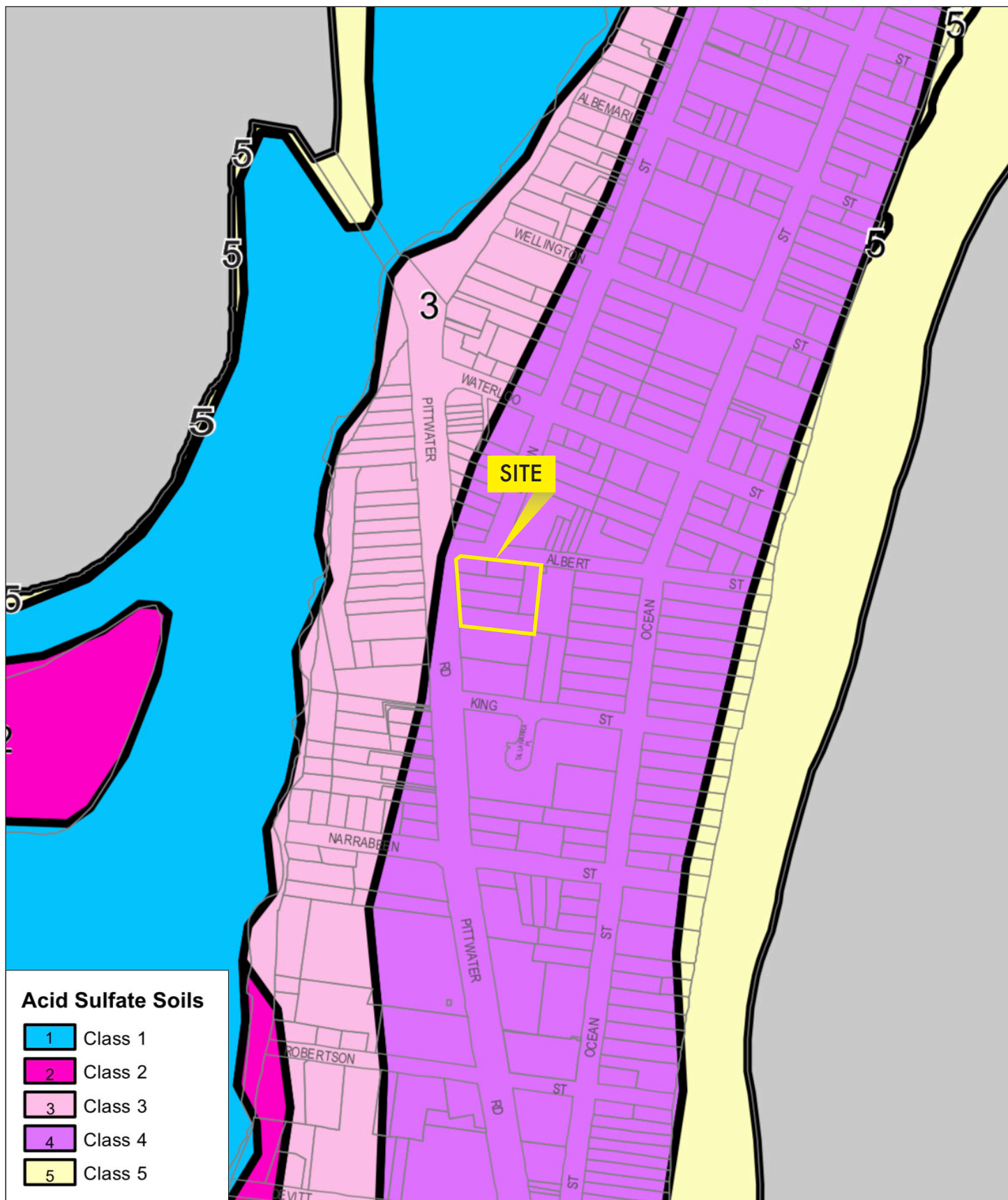




PLANNING PROPOSAL
No's 1294-1300 Pittwater Road and No's 2-4 Albert Street, Narrabeen

FIGURE 4D
Landslip Risk Map - Warringah LEP 2011

Prepared For - Highgate Management Pty Ltd



PLANNING PROPOSAL
No's 1294-1300 Pittwater Road and No's 2-4 Albert Street, Narrabeen

FIGURE 4E
Acid Sulfate Soils Map - Warringah LEP 2011

Prepared For - Highgate Management Pty Ltd