

A	B	C	D	E	F
Canopy Garden <ul style="list-style-type: none"> • Manage tree canopy structure and distribution. • Develop plan to manage flora structure. • Use botanical identification labels for significant planting. • Remove areas of understory planting to allow open views through gardens. • Access path along former tramway line incorporating historic interpretation. 	Open Space <ul style="list-style-type: none"> • Maintain open grass areas. • Provide activation elements such as outdoor fitness equipment, stage and amphitheatre. • Provide seating. • Provide physical and visual connection to surrounding botanical and open space areas. 	Rainforest Garden <ul style="list-style-type: none"> • Manage canopy structure and distribution. • Develop plan to manage flora structure. • Use botanical identification labels for significant planting. • Connect to pedestrian access where terrain permits. 	Native Bush Garden <ul style="list-style-type: none"> • Enhance typical bushland planting. • Manage tree canopy distribution. • Use botanical identification labels for significant planting. • Informal walking trails. • Feature sandstone rock outcrops as typical of a native bush garden. 	Formal and Interactive Gardens <ul style="list-style-type: none"> • Array of garden beds for formal displays. • Represent historic Wildflower Show theme in parts. • Sensory garden, seasonal displays, etc. • Pathways (soft) between beds to allow greater access. • Central lawn • Playground 	Sun Lawn <ul style="list-style-type: none"> • Open lawn for passive recreation. • Specimen trees with botanical identification labels. • Seating options. • Enhance the historic significance of the ANZAC Memorial.



1. Entry Plaza
Create entry space with signage, surface treatment and seating.



2. Tramway
Provide interpretation and path along alignment of old tramway



3. Raglan Street Access
Provide accessible link from tramway path to Raglan Street



4. Outdoor Fitness Area
Provide area of outdoor fitness equipment to provide for community recreation and help activate the park.



5. Vegetation Management
Thin and remove selected insignificant vegetation to create more visibility into the area and open views.



6. Top Lawn & Viewpoint
Maintain clear lines of sight from viewpoint. Some tree pruning or selected insignificant tree removal may be required.



7. Scout Hall
Renovate and explore options for additional community uses and venue hire.



8. Small Lawns
Quite zones overlooking rainforest gardens. Potential use for low key wedding ceremonies or similar community functions.



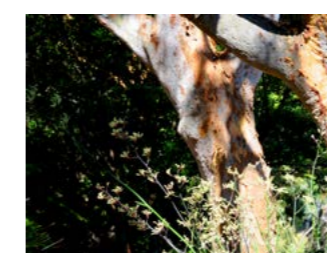
9. Rainforest Zone
Enhance and manage area to display rainforest species.



10. Native Zone
Maintain the dry native bush character with informal path and rock outcrops.



11. Boundary Fencing
Replace with heritage style picket fence to match oval fencing.



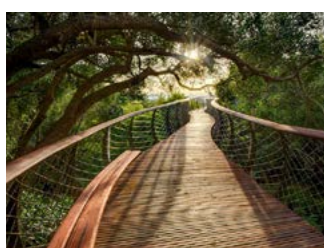
12. Native Edge
North facing sloping lawn allowing for passive uses overlooking the formal gardens and bowling club.



13. Raglan St Access
Provide ramp access to Raglan St



14. Park Ave Access
Provide accessible ramp access from Park Ave



15. Accessible Access
New path and bridge structure to provide accessible access into park from Park Ave.



16. Oval Path Access
Consider surface treatments to reinforce main access path into Ivanhoe Park Botanic Gardens.



17. Merrett Historic Gate
Identify as main entrance to Ivanhoe Park Botanic Gardens to provide better connection to Manly Town Centre.



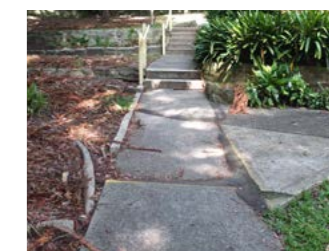
A. Path Access
Path access to upper lawn area.



B. Gazebo Stage
Performance stage and shelter positioned to take advantage of natural grass amphitheatre.



C. Relocate Path
Remove and relocate path to create better alignment and more inviting space.



D. Existing Paths
Maintain (most) existing paths and repair any trip hazards.



E. Memorial Zone
Maintain ANZAC memorial and surroundings and integrate to connected paths.



F. Boardwalk
Elevated boardwalk to provide accessible connection over water runoff area.



G. Small Playground
Replace small playground with equipment to suit surroundings



H. Central Lawn
Open space area. Main recreation and open space activity focus for the gardens.



J. Boardwalk
Accessible boardwalk as a feature and to connect and frame central lawn.



K. Wetland Pond
Wetland and pond created in area of natural site runoff.



L. Building
Remove existing building and construct new building to incorporate information kiosk, cafe or other community focused use.



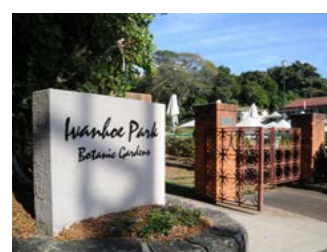
M. Deck Area
Building to incorporate deck to take advantage of north-east outlook and views over pond, garden and central lawn.



N. Formal Gardens
Allowing for seasonal displays and contained areas for educational plantings including interpretation of historic Wildflower Show.



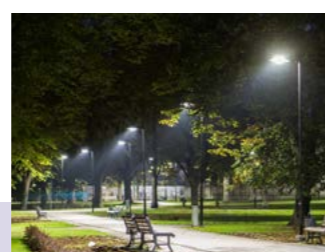
O. Sun Lawn
North facing sloping lawn allowing for passive uses overlooking the formal gardens and bowling club.



P. Entry Points
Reinvigorate with new signage and plantings.



Q. Main Boulevard
Widen and repave path to provide main pedestrian boulevard through the park.



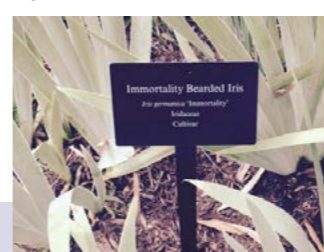
Lighting
Improve lighting to main paths and recreation areas.



Signage - Wayfinding
Provide signage throughout the gardens.



Signage - Interpretation
Provide information signage for key elements such as tramway and garden historic items.



Signage - Botanical
Provide botanical information signage for specimen trees, shrubs and garden areas.



Seating
Provide seating throughout gardens including arrangements to facilitate group conversation.



Reclined Seating
Include reclined seating for relaxation within the gardens.