

NOTES

1. INSTALL 2 KERB RAMP TO ALIGN ACROSS TULLAMORE AVE. REINSTALL WESTERN KERB RAMP TO MATCH INTO EXISTING FOOTPATH. ON EASTERN SIDE MATCH 1.5M FOOTPATH TO BACK OF KERB RAMP.
2. CONSTRUCT A 1.5M FOOTPATH 1M FROM PROPERTY BOUNDARY. TRANSITION FOOTPATH TO 1.7M FROM PROPERTY BOUNDARY AND MATCH INTO DRIVEWAY RETAINING WALL IN FRONT OF PROPERTY NO. 8 AND 10.
3. TRANSITION FOOTPATH 1.7M FROM BOUNDARY TO 0.6M FROM BOUNDARY FROM THE START OF BOUNDARY NO. 27 FOR APPROX. 6M LONG. MATCH INTO PROTRUDING BOUNDARY IF NEEDED IN FRONT OF PROPERTY NO. 18.
4. CONTINUE CONSTRUCTION OF 1.5M FOOTPATH 0.6M FROM BOUNDARY. IN FRONT OF PROPERTY NO. 22 REMOVE TREE AND MATCH INTO PROPERTY PLANT AREA IF NEEDED.
5. MAJOR ROOT AS NOTED ON THE PLANS WILL REQUIRE FOOTPATH TO BE RAISED WITH SAND AND 0.6M BATTER AND RETURF ON EITHER SIDE OF FOOTPATH IN FRONT OF PROPERTY NO. 22.
6. INSTALL A 1.2M WINGLESS KERB RAMP AS PER COUNCIL STANDARD ON THE CORNER OF RATHOWEN AND KILKENNY. INSTALL IN BETWEEN TREE AND POWER POLE STAYING CLOSE TO POWER POLE AS SHOWN. REMOVE PLANT.
7. INSTALL A 1.5M KERB RAMP TO ALIGN WITH WINGLESS KERB RAMP ACROSS KILKENNY AVE. CONSTRUCT 1.5M FOOTPATH 1.2M FROM BACK OF KERB AND CONTINUE AS SHOWN.
8. INSTALL A BOARDING SLAB AND TACTILE IN FRONT OF PROPERTY NO. 30 AS PER COUNCIL STANDARD NEXT TO EXISTING J STEM. NO BUS ZONE SIGNS TO BE INCLUDED.
9. INSTALL 2 KERB RAMP TO ALIGN ACROSS CARLOW CRES AND CONTINUE 1.5M FOOTPATH 1.2M FROM BACK OF KERB.
10. INSTALL 2 KERB RAMP TO ALIGN ACROSS CARLOW CRES. CONTINUE 1.5M FOOTPATH 1.2M FROM BACK OF KERB. MAINTAIN CLEARANCE OF POWER POLE.
11. RELOCATE BUS J STEM AS SHOWN AND INSTALL BOARDING SLAB AND TACTILES IN FRONT OF PROPERTY NO. 40 AS PER COUNCIL STANDARD. INCLUDE A BUS ZONE SIGN 14M BEFORE J STEM MAINTAINING 10M FROM INTERSECTION, AND A BUS ZONE SIGN 6.5M BEHIND J STEM AS SHOWN.
12. INSTALL A KERB RAMP 1.2M AFTER J STEM IN FRONT OF PROPERTY NO.42 AND INSTALL ADDITIONAL KERB RAMP TO ALIGN ACROSS RATHOWEN ST AS SHOWN.
13. CONSTRUCT A 1.5M FOOTPATH 1.2M FROM BACK OF KERB TO MATCH INTO EXISTING FOOTPATH AS SHOWN. REMOVE TREE AND ROOTS AND RETURF EXCAVATED AREA IN FRONT OF NO. 31.
14. RELOCATE SIGN POST TO 0.6M FROM KERB IN FRONT OF PROPERTY NO. 24, 28 AND 40.
21. MATCH FOOTPATH INTO TELSTRA, PMG, HYDRANT AND SV LID'S AS SHOWN.
22. CUT BACK OVERHANGING BRANCHES AS PER COUNCIL'S ARBORIST DIRECTION. MAINTAIN A 3M DIAMETER OF NO EXCAVATION AROUND TREE AS PER COUNCIL ARBORIST DIRECTION.
23. INSTALL CONCRETE FOOTPATH WITH TRIP STOP JOINTS NEAR TREES. TRIM ROOTS AS PER COUNCIL'S ARBORIST DIRECTION.
24. BATTER AND RETURF A MIN 0.6M ALONG FOOTPATH EDGE.
25. THE POSITION OF TREES, SERVICES PTS, POLES, MARKER POSTS, SIGNS, ETC ARE INDICATIVE ONLY.
26. IT IS THE RESPONSIBILITY OF THE CONTRACTOR PRIOR TO ANY DEMOLITION, EXCAVATION OR CONSTRUCTION ACTIVITY ON OR ADJACENT TO THE SITE TO OBTAIN UPDATED SERVICES DIAGRAMS THROUGH A DIAL-BEFORE-YOU-DIG SEARCH AND PHYSICAL SEARCH TO ESTABLISH AND CONFIRM THE EXACT LOCATION/S AND DEPTH/S OF ALL UNDERGROUND SERVICES, PRIOR TO COMMENCEMENT.

LEGEND

- NEW FOOTPATH 1.5M WIDE UNO, 75MM THICK PLAIN CONCRETE 25MPa NO REQ, BROOM FINISH
- NEW FOOTPATH 1.5M WIDE UNO ACROSS DRIVEWAY ALIGNMENT 130MM THICK PLAIN CONCRETE 25MPa SL72 REQ 30MM COVER, COVE FINISH
- NEW FOOTPATH 1.5M WIDE UNO ACROSS UNIT DRIVEWAY ALIGNMENT 150MM THICK PLAIN CONCRETE 25MPa SL82 REQ 30MM COVER, COVE FINISH
- NEW FOOTPATH 1.5M WIDE UNO ACROSS INDUSTRIAL DWY ALIGNMENT 180MM THICK PLAIN CONCRETE 25MPa SL82 REQ 30MM COVER, COVE FINISH
- NEW CONCRETE PRAM RAMP, COLOUR - DARK TERRACOTTA 25MPa WINGS 500MM WIDE COVE FINISH

SUMMARY OF WORK

- CONSTRUCTION OF APPROX. 343M OF CONCRETE FOOTPATH 1.5M WIDE (APPROX. 515M²)
- BATTER AND RETURF SIDES AS REQUIRED (APPROX. 412M²)
- INSTALL 10 KERB RAMP
- RELOCATE 1 J STEM AND INSTALL 2 BUS ZONE SIGNS
- INSTALL 2 BUS STANDS WITH TACTILES
- REMOVE 2 TREES
- TRIM OVERHANGING BRANCHES FROM FOOTPATH
- REMOVE 1 PLANT
- RELOCATE 3 SIGN POSTS

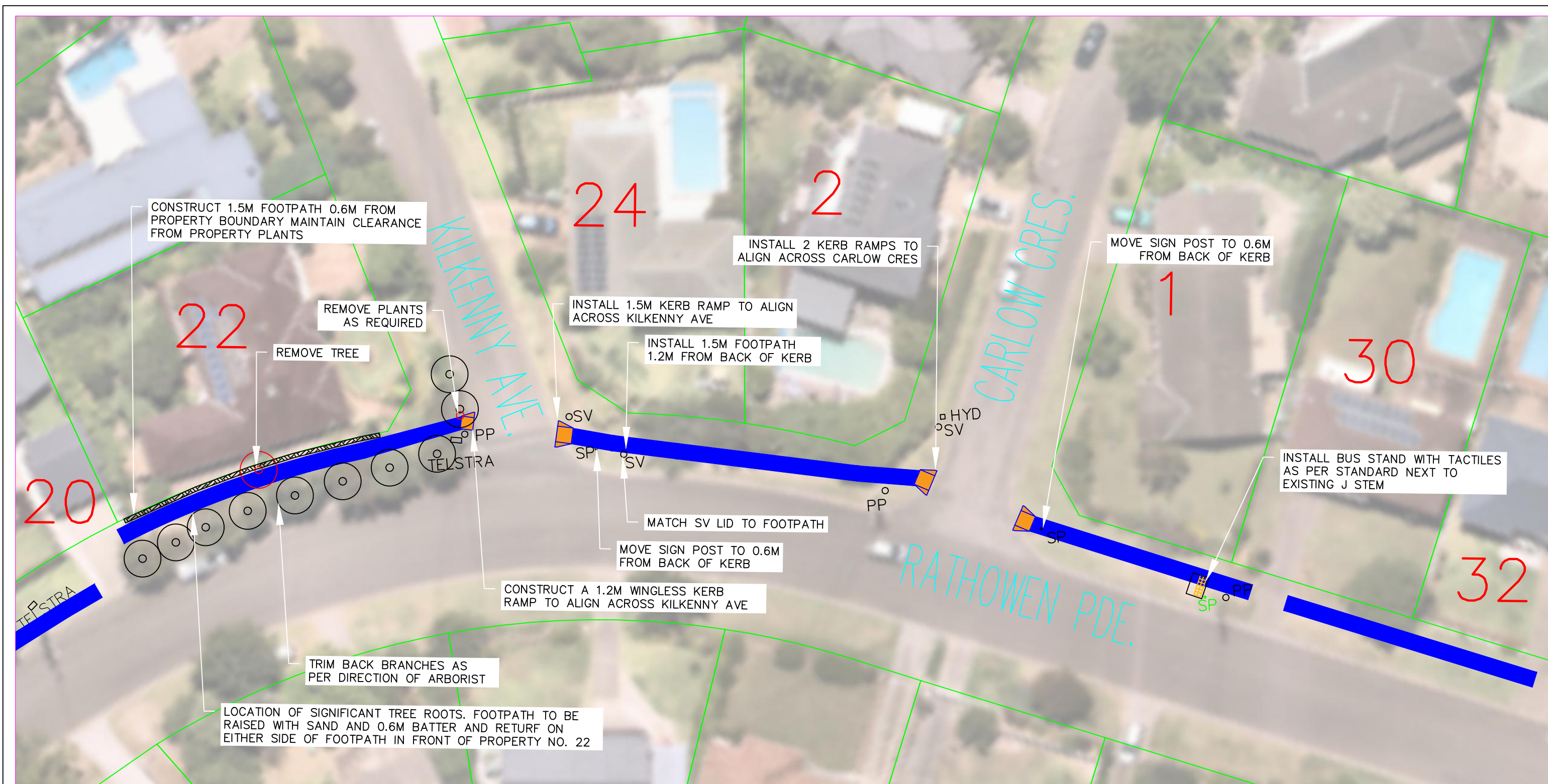


LAYOUT PLAN 1
RATHOWEN PARADE
KILLARNY HEIGHTS
FOOTPATH CONCEPT PLAN
ISSUED FOR CONSTRUCTION

DRAWING NO. TCI-RATHOWEN PARADE FOOTPATH-0001-CONCEPT

ISSUE: 2





- NOTES**
1. INSTALL 2 KERB RAMP TO ALIGN ACROSS TULLAMORE AVE. REINSTALL WESTERN KERB RAMP TO MATCH INTO EXISTING FOOTPATH. ON EASTERN SIDE MATCH 1.5M FOOTPATH TO BACK OF KERB RAMP.
 2. CONSTRUCT A 1.5M FOOTPATH 1M FROM PROPERTY BOUNDARY. TRANSITION FOOTPATH TO 1.7M FROM PROPERTY BOUNDARY AND MATCH INTO DRIVEWAY RETAINING WALL IN FRONT OF PROPERTY NO. 8 AND 10.
 3. TRANSITION FOOTPATH 1.7M FROM BOUNDARY TO 0.6M FROM BOUNDARY FROM THE START OF BOUNDARY NO. 27 FOR APPROX. 6M LONG. MATCH INTO PROTRUDING BOUNDARY IF NEEDED IN FRONT OF PROPERTY NO. 18.
 4. CONTINUE CONSTRUCTION OF 1.5M FOOTPATH 0.6M FROM BOUNDARY. IN FRONT OF PROPERTY NO. 22 REMOVE TREE AND MATCH INTO PROPERTY PLANT AREA IF NEEDED.
 5. MAJOR ROOT AS NOTED ON THE PLANS WILL REQUIRE FOOTPATH TO BE RAISED WITH SAND AND 0.6M BATTER AND RETURF ON EITHER SIDE OF FOOTPATH IN FRONT OF PROPERTY NO. 22.
 6. INSTALL A 1.2M WINGLESS KERB RAMP AS PER COUNCIL STANDARD ON THE CORNER OF RATHOWEN AND KILKENNY. INSTALL IN BETWEEN TREE AND POWER POLE STAYING CLOSE TO POWER POLE AS SHOWN. REMOVE PLANT.
 7. INSTALL A 1.5M KERB RAMP TO ALIGN WITH WINGLESS KERB RAMP ACROSS KILKENNY AVE. CONSTRUCT 1.5M FOOTPATH 1.2M FROM BACK OF KERB AND CONTINUE AS SHOWN.
 8. INSTALL A BOARDING SLAB AND TACTILE IN FRONT OF PROPERTY NO. 30 AS PER COUNCIL STANDARD NEXT TO EXISTING J STEM. NO BUS ZONE SIGNS TO BE INCLUDED.
 9. INSTALL 2 KERB RAMP TO ALIGN ACROSS CARLOW CRES AND CONTINUE 1.5M FOOTPATH 1.2M FROM BACK OF KERB.
 10. INSTALL 2 KERB RAMP TO ALIGN ACROSS CARLOW CRES. CONTINUE 1.5M FOOTPATH 1.2M FROM BACK OF KERB. MAINTAIN CLEARANCE OF POWER POLE.
 11. RELOCATE BUS J STEM AS SHOWN AND INSTALL BOARDING SLAB AND TACTILES IN FRONT OF PROPERTY NO. 40 AS PER COUNCIL STANDARD. INCLUDE A BUS ZONE SIGN 14M BEFORE J STEM MAINTAINING 10M FROM INTERSECTION. AND A BUS ZONE SIGN 5.5M BEHIND J STEM AS SHOWN.
 12. INSTALL A KERB RAMP 1.2M AFTER J STEM IN FRONT OF PROPERTY NO.42 AND INSTALL ADDITIONAL KERB RAMP TO ALIGN ACROSS RATHOWEN ST AS SHOWN.
 13. CONSTRUCT A 1.5M FOOTPATH 1.2M FROM BACK OF KERB TO MATCH INTO EXISTING FOOTPATH AS SHOWN. REMOVE TREE AND ROOTS AND RETURF EXCAVATED AREA IN FRONT OF NO. 31.
 14. RELOCATE SIGN POST TO 0.6M FROM KERB IN FRONT OF PROPERTY NO. 24, 28 AND 40.
 21. MATCH FOOTPATH INTO TELSTRA, PMG, HYDRANT AND SV LID'S AS SHOWN.
 22. CUT BACK OVERHANGING BRANCHES AS PER COUNCIL'S ARBORIST DIRECTION. MAINTAIN A 3M DIAMETER OF NO EXCAVATION AROUND TREE AS PER COUNCIL ARBORIST DIRECTION.
 23. INSTALL CONCRETE FOOTPATH WITH TRIP STOP JOINTS NEAR TREES. TRIM ROOTS AS PER COUNCIL'S ARBORIST DIRECTION.
 24. BATTER AND RETURF A MIN 0.6M ALONG FOOTPATH EDGE.
 25. THE POSITION OF TREES, SERVICES PTS, POLES, MARKER POSTS, SIGNS, ETC ARE INDICATIVE ONLY.
 26. IT IS THE RESPONSIBILITY OF THE CONTRACTOR PRIOR TO ANY DEMOLITION, EXCAVATION OR CONSTRUCTION ACTIVITY ON OR ADJACENT TO THE SITE TO OBTAIN UPDATED SERVICES DIAGRAMS THROUGH A DIAL-BEFORE-YOU-DIG SEARCH AND PHYSICAL SEARCH TO ESTABLISH AND CONFIRM THE EXACT LOCATION/S AND DEPTH/S OF ALL UNDERGROUND SERVICES, PRIOR TO COMMENCEMENT.

LEGEND	
	NEW FOOTPATH 1.5M WIDE UNO, 75MM THICK PLAIN CONCRETE 25MPa NO REQ, BROOM FINISH
	NEW FOOTPATH 1.5M WIDE UNO ACROSS DRIVEWAY ALIGNMENT 130MM THICK PLAIN CONCRETE 25MPa SL72 REQ 30MM COVER, COVE FINISH
	NEW FOOTPATH 1.5M WIDE UNO ACROSS UNIT DRIVEWAY ALIGNMENT 150MM THICK PLAIN CONCRETE 25MPa SL82 REQ 30MM COVER, COVE FINISH
	NEW FOOTPATH 1.5M WIDE UNO ACROSS INDUSTRIAL DWY ALIGNMENT 180MM THICK PLAIN CONCRETE 25MPa SL82 REQ 30MM COVER, COVE FINISH
	NEW CONCRETE PRAM RAMP, COLOUR - DARK TERRACOTTA 25MPa WINGS 500MM WIDE COVE FINISH

SUMMARY OF WORK

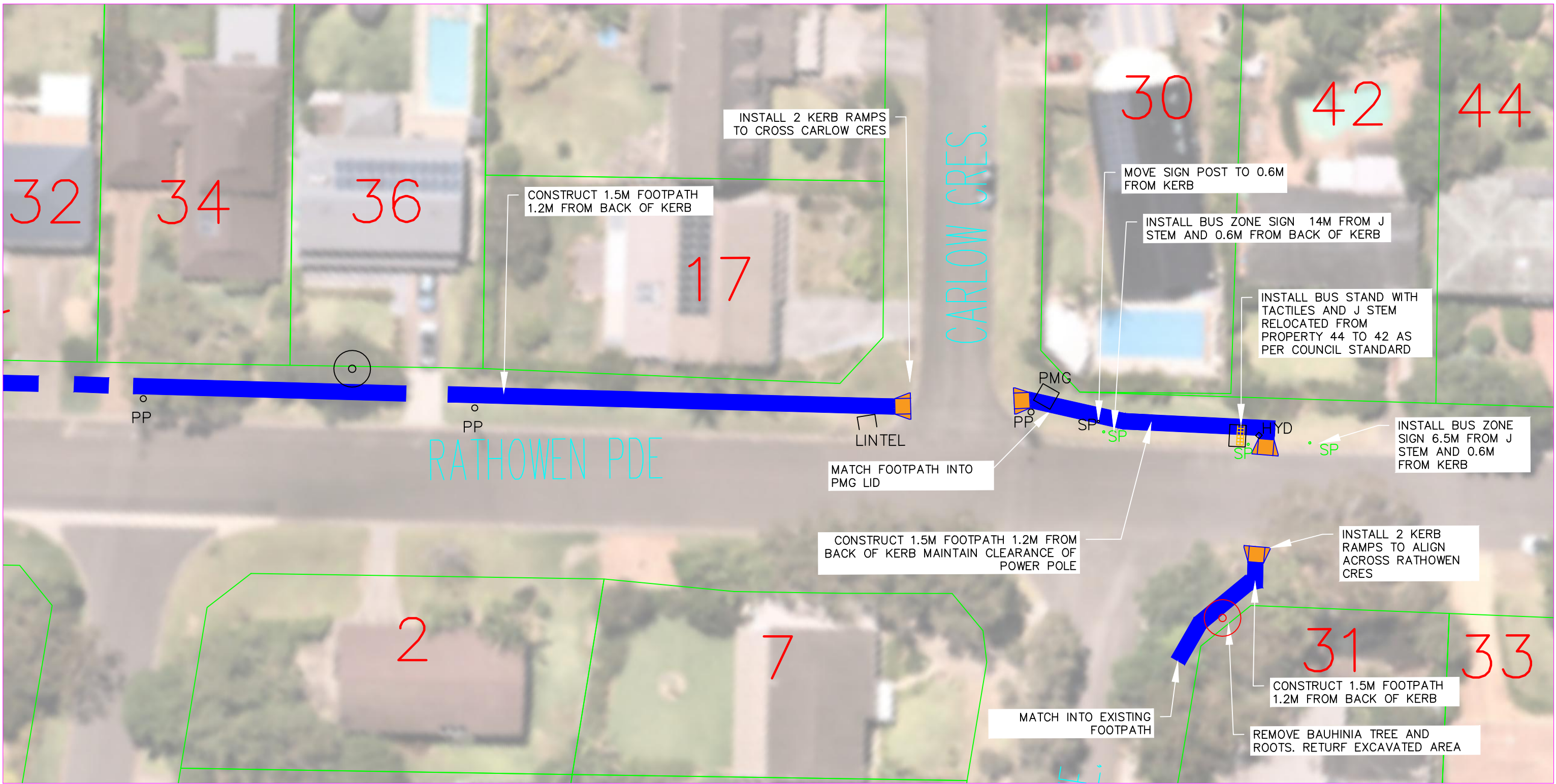
- CONSTRUCTION OF APPROX. 343M OF CONCRETE FOOTPATH 1.5M WIDE (APPROX. 515M²)
- BATTER AND RETURF SIDES AS REQUIRED (APPROX. 412M²)
- INSTALL 10 KERB RAMP
- RELOCATE 1 J STEM AND INSTALL 2 BUS ZONE SIGNS
- INSTALL 2 BUS STANDS WITH TACTILES
- REMOVE 2 TREES
- TRIM OVERHANGING BRANCHES FROM FOOTPATH
- REMOVE 1 PLANT
- RELOCATE 3 SIGN POSTS

northern beaches council

LAYOUT PLAN 2
RATHOWEN PARADE
KILLARNEY HEIGHTS
FOOTPATH CONCEPT PLAN
ISSUED FOR CONSTRUCTION

DRAWING NO. TCI-RATHOWEN PARADE FOOTPATH-0002-CONCEPT

ISSUE: 2



NOTES

1. INSTALL 2 KERB RAMPS TO ALIGN ACROSS TULLAMORE AVE. REINSTALL WESTERN KERB RAMP TO MATCH INTO EXISTING FOOTPATH. ON EASTERN SIDE MATCH 1.5M FOOTPATH TO BACK OF KERB RAMP.
2. CONSTRUCT A 1.5M FOOTPATH 1M FROM PROPERTY BOUNDARY. TRANSITION FOOTPATH TO 1.7M FROM PROPERTY BOUNDARY AND MATCH INTO DRIVEWAY RETAINING WALL IN FRONT OF PROPERTY NO. 8 AND 10.
3. TRANSITION FOOTPATH 1.7M FROM BOUNDARY TO 0.6M FROM BOUNDARY FROM THE START OF BOUNDARY NO. 27 FOR APPROX. 6M LONG. MATCH INTO PROTRUDING BOUNDARY IF NEEDED IN FRONT OF PROPERTY NO. 18.
4. CONTINUE CONSTRUCTION OF 1.5M FOOTPATH 0.6M FROM BOUNDARY. IN FRONT OF PROPERTY NO. 22 REMOVE TREE AND MATCH INTO PROPERTY PLANT AREA IF NEEDED.
5. MAJOR ROOT AS NOTED ON THE PLANS WILL REQUIRE FOOTPATH TO BE RAISED WITH SAND AND 0.6M BATTER AND RETURF ON EITHER SIDE OF FOOTPATH IN FRONT OF PROPERTY NO. 22.
6. INSTALL A 1.2M WINGLESS KERB RAMP AS PER COUNCIL STANDARD ON THE CORNER OF RATHOWEN AND KILKENNY. INSTALL IN BETWEEN TREE AND POWER POLE STAYING CLOSE TO POWER POLE AS SHOWN. REMOVE PLANT.
7. INSTALL A 1.5M KERB RAMP TO ALIGN WITH WINGLESS KERB RAMP ACROSS KILKENNY AVE. CONSTRUCT 1.5M FOOTPATH 1.2M FROM BACK OF KERB AND CONTINUE AS SHOWN.
8. INSTALL A BOARDING SLAB AND TACTILE IN FRONT OF PROPERTY NO. 30 AS PER COUNCIL STANDARD NEXT TO EXISTING J STEM. NO BUS ZONE SIGNS TO BE INCLUDED.
9. INSTALL 2 KERB RAMPS TO ALIGN ACROSS CARLOW CRES AND CONTINUE 1.5M FOOTPATH 1.2M FROM BACK OF KERB.
10. INSTALL 2 KERB RAMPS TO ALIGN ACROSS CARLOW CRES. CONTINUE 1.5M FOOTPATH 1.2M FROM BACK OF KERB. MAINTAIN CLEARANCE OF POWER POLE.
11. RELOCATE BUS J STEM AS SHOWN AND INSTALL BOARDING SLAB AND TACTILES IN FRONT OF PROPERTY NO. 40 AS PER COUNCIL STANDARD. INCLUDE A BUS ZONE SIGN 14M BEFORE J STEM MAINTAINING 10M FROM INTERSECTION, AND A BUS ZONE SIGN 5.5M BEHIND J STEM AS SHOWN.
12. INSTALL A KERB RAMP 1.2M AFTER J STEM IN FRONT OF PROPERTY NO.42 AND INSTALL ADDITIONAL KERB RAMP TO ALIGN ACROSS RATHOWEN ST AS SHOWN.
13. CONSTRUCT A 1.5M FOOTPATH 1.2M FROM BACK OF KERB TO MATCH INTO EXISTING FOOTPATH AS SHOWN. REMOVE TREE AND ROOTS AND RETURF EXCAVATED AREA IN FRONT OF NO. 31.
14. RELOCATE SIGN POST TO 0.6M FROM KERB IN FRONT OF PROPERTY NO. 24, 28 AND 40.
21. MATCH FOOTPATH INTO TELSTRA, PMG, HYDRANT AND SV LID'S AS SHOWN.
22. CUT BACK OVERHANGING BRANCHES AS PER COUNCIL'S ARBORIST DIRECTION. MAINTAIN A 3M DIAMETER OF NO EXCAVATION AROUND TREE AS PER COUNCIL ARBORIST DIRECTION.
23. INSTALL CONCRETE FOOTPATH WITH TRIP STOP JOINTS NEAR TREES. TRIM ROOTS AS PER COUNCIL'S ARBORIST DIRECTION.
24. BATTER AND RETURF A MIN 0.6M ALONG FOOTPATH EDGE.
25. THE POSITION OF TREES, SERVICES PTS, POLES, MARKER POSTS, SIGNS, ETC ARE INDICATIVE ONLY.
26. IT IS THE RESPONSIBILITY OF THE CONTRACTOR PRIOR TO ANY DEMOLITION, EXCAVATION OR CONSTRUCTION ACTIVITY ON OR ADJACENT TO THE SITE TO OBTAIN UPDATED SERVICES DIAGRAMS THROUGH A DIAL-BEFORE-YOU-DIG SEARCH AND PHYSICAL SEARCH TO ESTABLISH AND CONFIRM THE EXACT LOCATION/S AND DEPTH/S OF ALL UNDERGROUND SERVICES, PRIOR TO COMMENCEMENT.

LEGEND

- NEW FOOTPATH 1.5M WIDE UNO, 75MM THICK PLAIN CONCRETE 25MPa NO REQ, BROOM FINISH
- NEW FOOTPATH 1.5M WIDE UNO ACROSS DRIVEWAY ALIGNMENT 130MM THICK PLAIN CONCRETE 25MPa SL72 REQ 30MM COVER, COVE FINISH
- NEW FOOTPATH 1.5M WIDE UNO ACROSS UNIT DRIVEWAY ALIGNMENT 150MM THICK PLAIN CONCRETE 25MPa SL82 REQ 30MM COVER, COVE FINISH
- NEW FOOTPATH 1.5M WIDE UNO ACROSS INDUSTRIAL DWY ALIGNMENT 180MM THICK PLAIN CONCRETE 25MPa SL82 REQ 30MM COVER, COVE FINISH
- NEW CONCRETE PRAM RAMP, COLOUR - DARK TERRACOTTA 25MPa WINGS 500MM WIDE COVE FINISH

SUMMARY OF WORK

- CONSTRUCTION OF APPROX. 343M OF CONCRETE FOOTPATH 1.5M WIDE (APPROX. 515M²)
- BATTER AND RETURF SIDES AS REQUIRED (APPROX. 412M²)
- INSTALL 10 KERB RAMPS
- RELOCATE 1 J STEM AND INSTALL 2 BUS ZONE SIGNS
- INSTALL 2 BUS STANDS WITH TACTILES
- REMOVE 2 TREES
- TRIM OVERHANGING BRANCHES FROM FOOTPATH
- REMOVE 1 PLANT
- RELOCATE 3 SIGN POSTS



LAYOUT PLAN 3
RATHOWEN PARADE
KILLARNEY HEIGHTS
FOOTPATH CONCEPT PLAN
ISSUED FOR CONSTRUCTION

