

4.0 APPENDICES



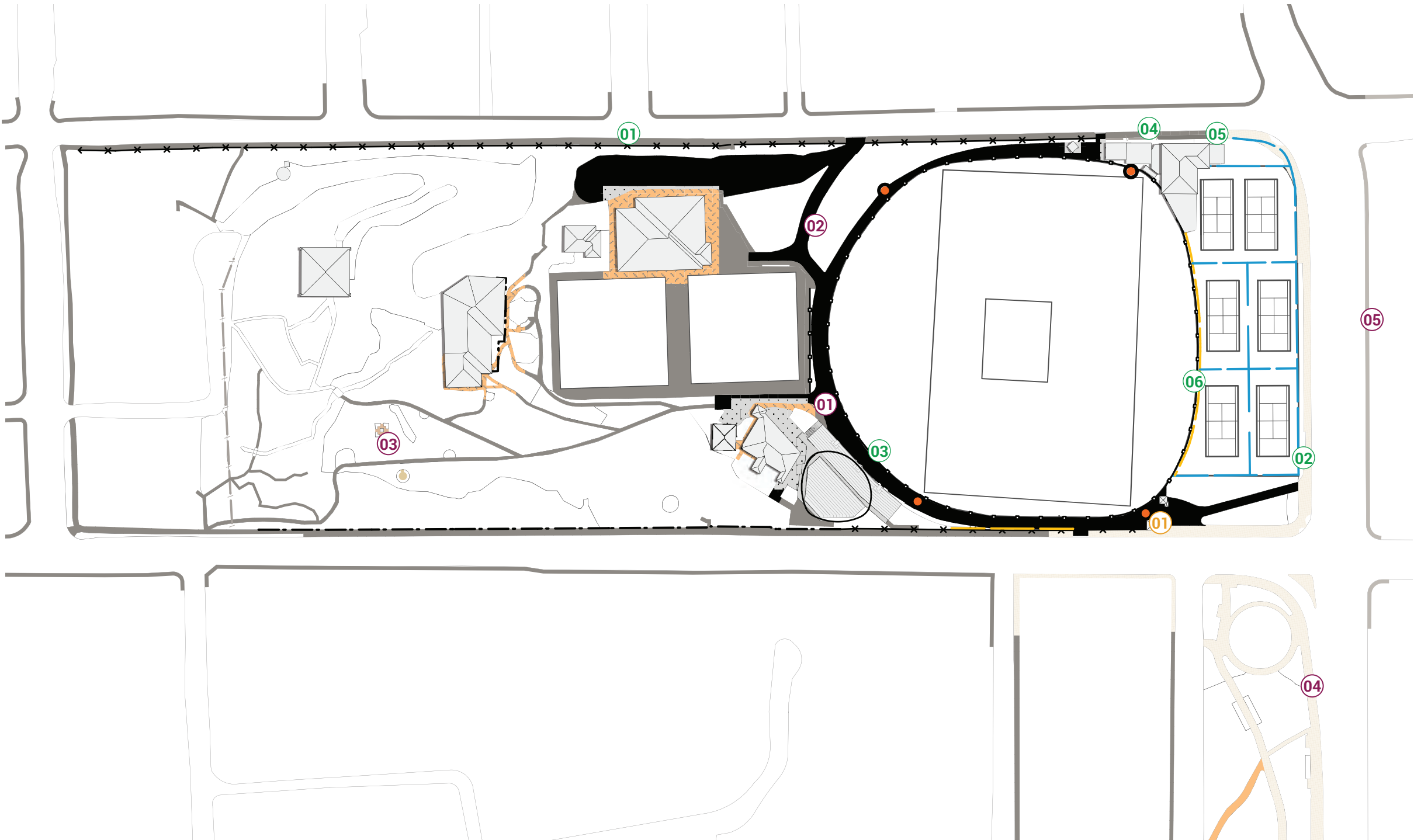
APPENDIX 01- DETAILED SITE INVESTIGATIONS

SITE INVENTORY

PAVING AND FENCES

Ivanhoe Park is a mosaic of different landscape edge conditions and surfaces. Existing pavement and fence lines have been categorised and inventorised, in order to understand the site in greater detail.

- Concrete Pavement
- Asphalt
- Sandstone Pavement
- Stone Pavers
- Sandstone Crazy Paving
- Granite Pavers
- Steel Mesh Fence
- Tennis Court Fence
- White Picket Balustrade
- Security Mesh Fence
- Timber Fence
- Brick Wall
- Cricket Ball Fence
- Flood Lights
- 1:1500 @ A3



Site Analysis Diagram

EXISTING PAVEMENT

24% of overall paving on the site was a degraded insitu concrete. The vehicular paving was composed of new and old asphalt and also used by pedestrians for circulation and as event space. Paths surrounding the eastern portion of the site are high low quality cobble stones.

- 01 Concrete paving within the Botanic Gardens
- 02 Asphalt paving
- 03 Sandstone pavement
- 04 Stone Brick Pavers
- 05 Granite Pavers



EXISTING FENCE LINES

The site is fringed by a combination of fence types. These provide safety barriers for dangerous falls, security and direction pedestrian flow. There are also visually dominate sports required fences which stick out in the site.

- 06 Mesh fence along Raglan Street
- 07 Tennis court fences with site line guides
- 08 Picket fence around oval
- 09 Timber fence along Raglan Street
- 10 Brick wall/fence with ventilation gaps
- 11 Large cricket ball capture nets along Belgrave St



LIGHTING

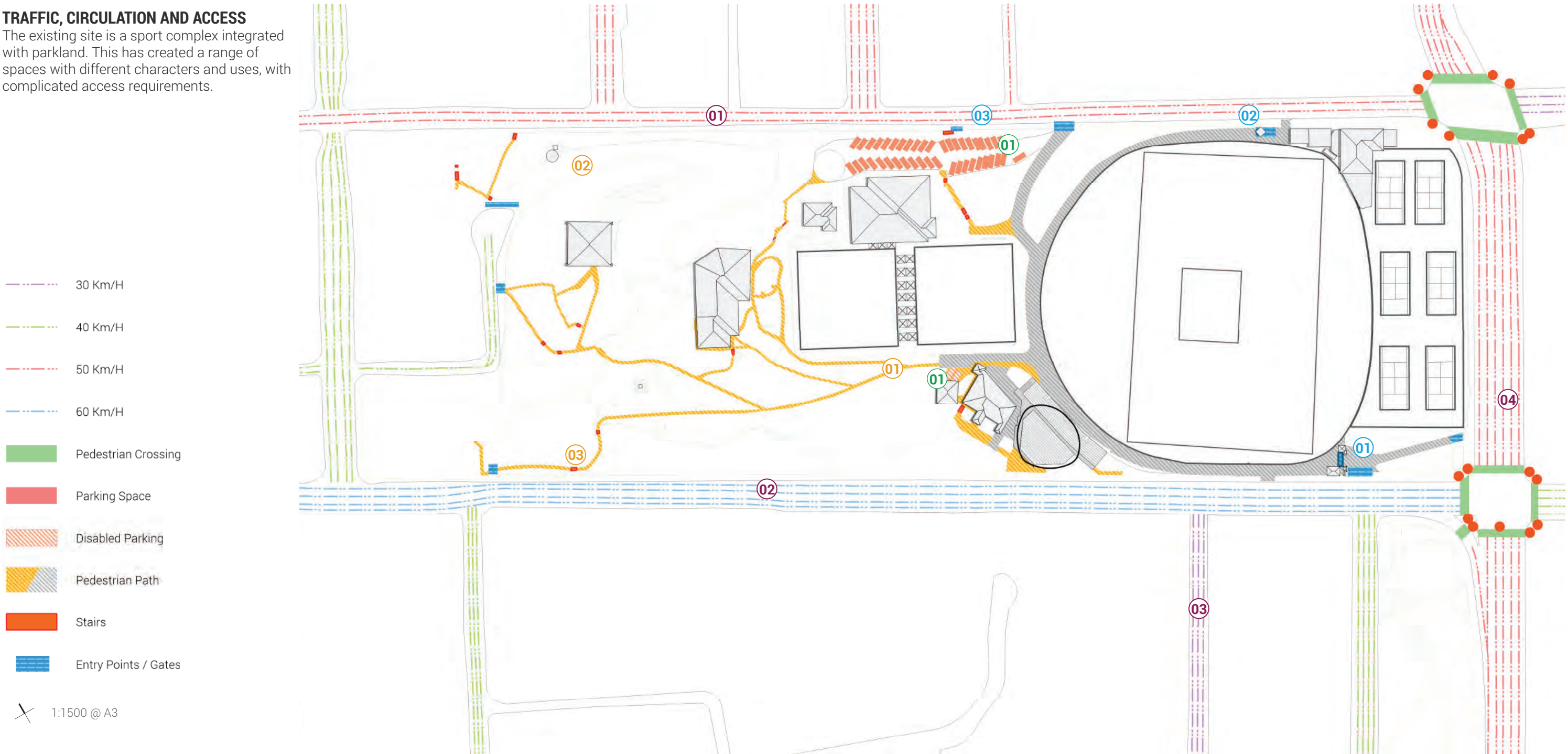
There are four large visually dominate spot lights for the oval and safety lighting along some of the paths.

- 12 Spot Lights
- 13 Safety lighting



TRAFFIC, CIRCULATION AND ACCESS

The existing site is a sport complex integrated with parkland. This has created a range of spaces with different characters and uses, with complicated access requirements.



Site Analysis Diagram

TRAFFIC

The site is flanked by two key arterial roads. In particular Sydney road is dominant due to the quantity of traffic flowing down and the speed. Whilst perpendicular to the site are quiet lane ways with slow traffic.

- 01 Raglan St - 50km/per hour
- 02 Sydney Road - 60km/per hour
- 03 Eustace St - 30km/per hour
- 04 Belgrave St - 50km/per hour

PARKING

There is one dominant car park behind the lawn bowls area which approx. 53 official parking spots. Whilst two disabled spots are located next to the grandstand and is often used by referees.

- 01 Disabled parking
- 02 Lawn bowls car park

CIRCULATION

The site has a range of steep paths with stairs and potentially DDA accessible connections. The surface material and quality changes regularly throughout the site.

- 01 Flat grade leading to the war memorial.
- 02 The 'Tram Way' a lawn access path.
- 02 Sandstone steps commonly found throughout the site.

ACCESS


There is a combination of well defined entrances with heritage character and unapparent low quality entry points.

- 01 Sandstone Memorial Entrance
- 02 Raglan Street Tennis Club Entrance
- 03 Low-key carpark entry




TREES AND VEGETATION


The existing site is a sport complex integrated with parkland. This has created a range of spaces with different characters and uses, with complicated access requirements. Iconic tree specimens from the late 1800s stand out in the landscape. These specimens range from tall Norfolk Island Palms to broad Fig species. However, the site is also filled in with dense undergrowth and restricted views.




Norfolk Island Palm




Bunya Bunya Pine



Hoop Pine



Cook Pine



Cabbage Palm







Fig Tree




Canopy Trees




Vegetation



Managed Native Vegetation



Botanic Gardens



1:1500 @ A3



Site Analysis Diagram

KEY TREE SPECIES

Ivanhoe park contains significant tree specimens which are fully mature due to the age of the park. There are four types of pine trees that are 35m+ in height. In particular the 3 mature Norfolk Island Pines are salient specimens that locate the park in its context. Large canopy trees have formed rainforest like spaces in the western portion of the site. Creating a distinct microclimate different to the Lawn Bowls / Oval portion of the site.

- 01 Bunya Pine
- 02 Cabbage Palm
- 03 Cook Pine
- 04 Hoop Pine
- 05 Norfolk Island Pine

VEGETATION TYPES

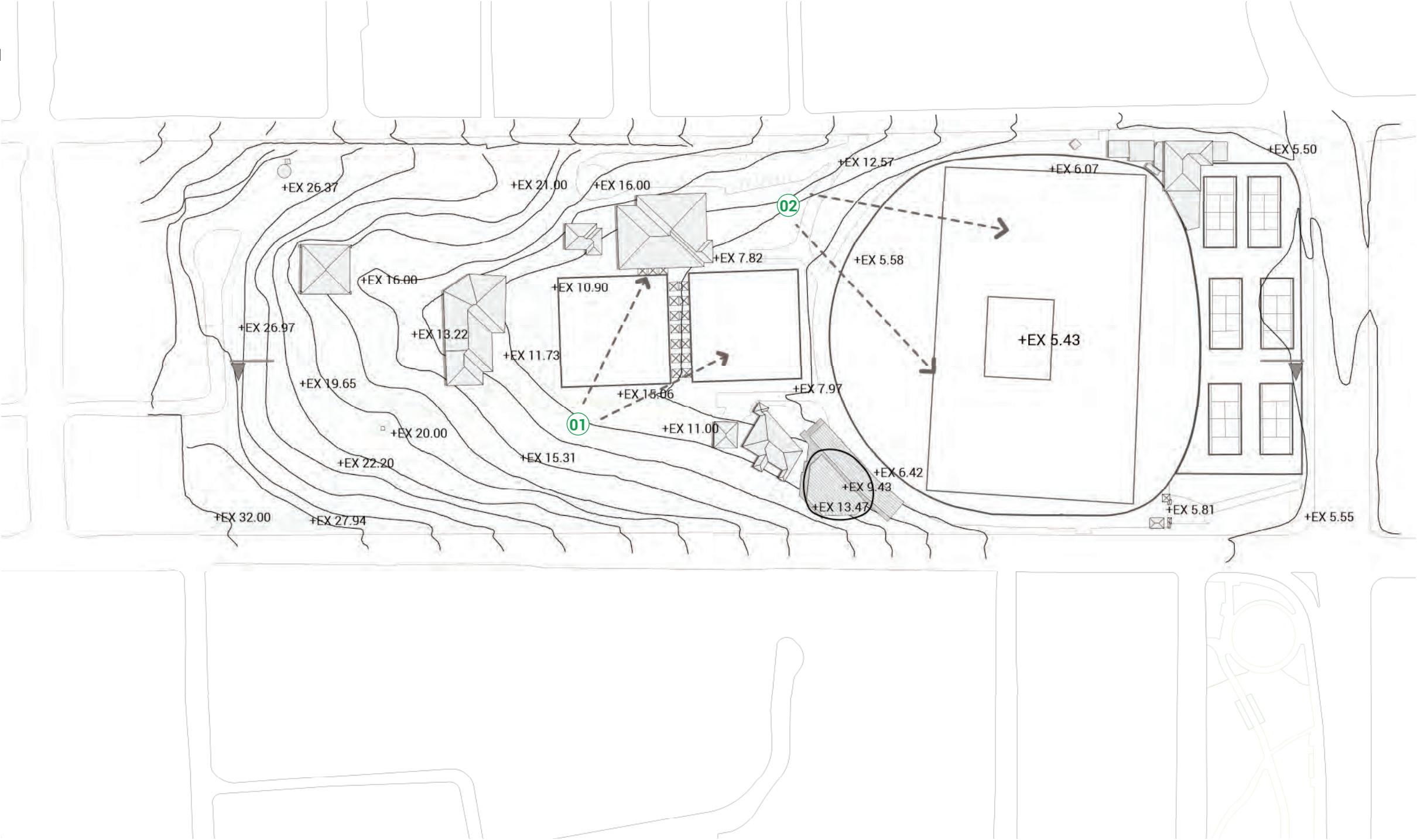
The site has a rambunctious quality of vegetation and undergrowth throughout the site. However, there are three dominant typologies of vegetation; Gardens, Native Planting and the Botanic Gardens. Overall there is a diverse range of species ranging from mature exotics to endemic natives. Quality of management varies throughout the site.

- 01 Botanic Garden Planting
- 02 Draceana spp.
- 03 Formal Botanic Gardens
- 04 Rambunctious exotic planting
- 05 Palm Grove
- 06 Kangaroo Paws - Managed Native Vegetation



LANDFORM AND VIEWS

The site has a 21.47m level change from Belgrave Street to Park Avenue. This has created complex circulation, natural amphitheatres, and expansive views.

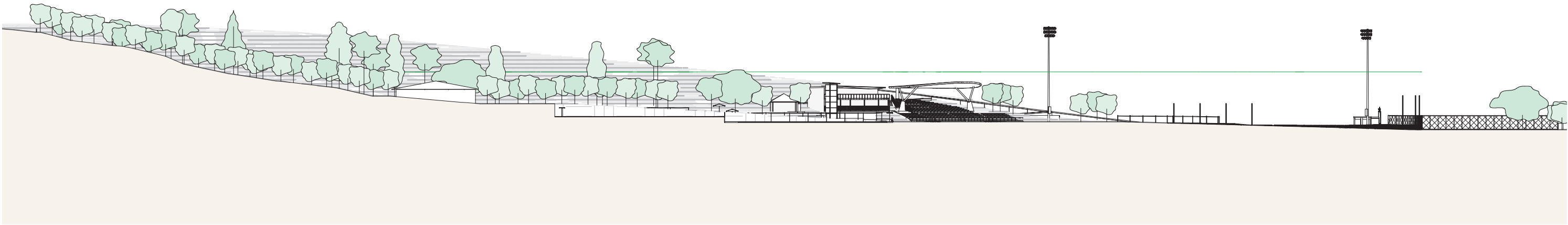


- Contours
- +EX 5.58 Existing Levels
- Key Views
- 1:1500 @ A3

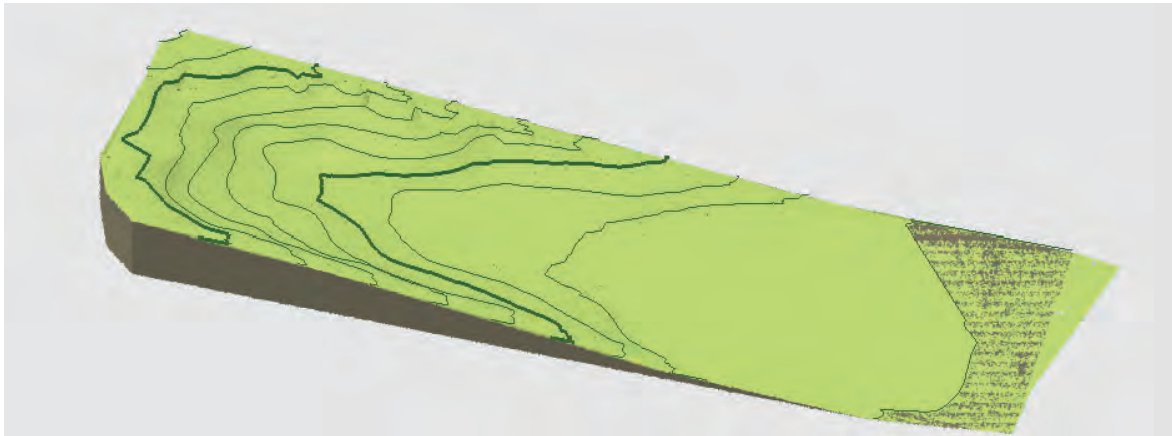
Site Analysis Diagram

LANDFORM

Longitudinally the site drops 21.47 m from the West to the East. In some sections of the site there are grades as steep as 1:3.5. The landform forms a bowl like shape in the centre as steep banks hug the Lawn Bowls and further down the oval. The Eastern portion of the site is mostly flat.



Longitudinal Section 1:1000 @ A3



Landform Model

VIEWS

Due to the sites consistent steep grade the western half provides great vantage points looking overall the Lawn Bowls and Oval with the coastal back drop. However, there are also gaps in the vegetation and moments that offer more intimate views laterally through the site.

- 01 View from within the gardens to the Lawn Bowls and beyond.
- 02 View from Rat Hill overlooking the oval.

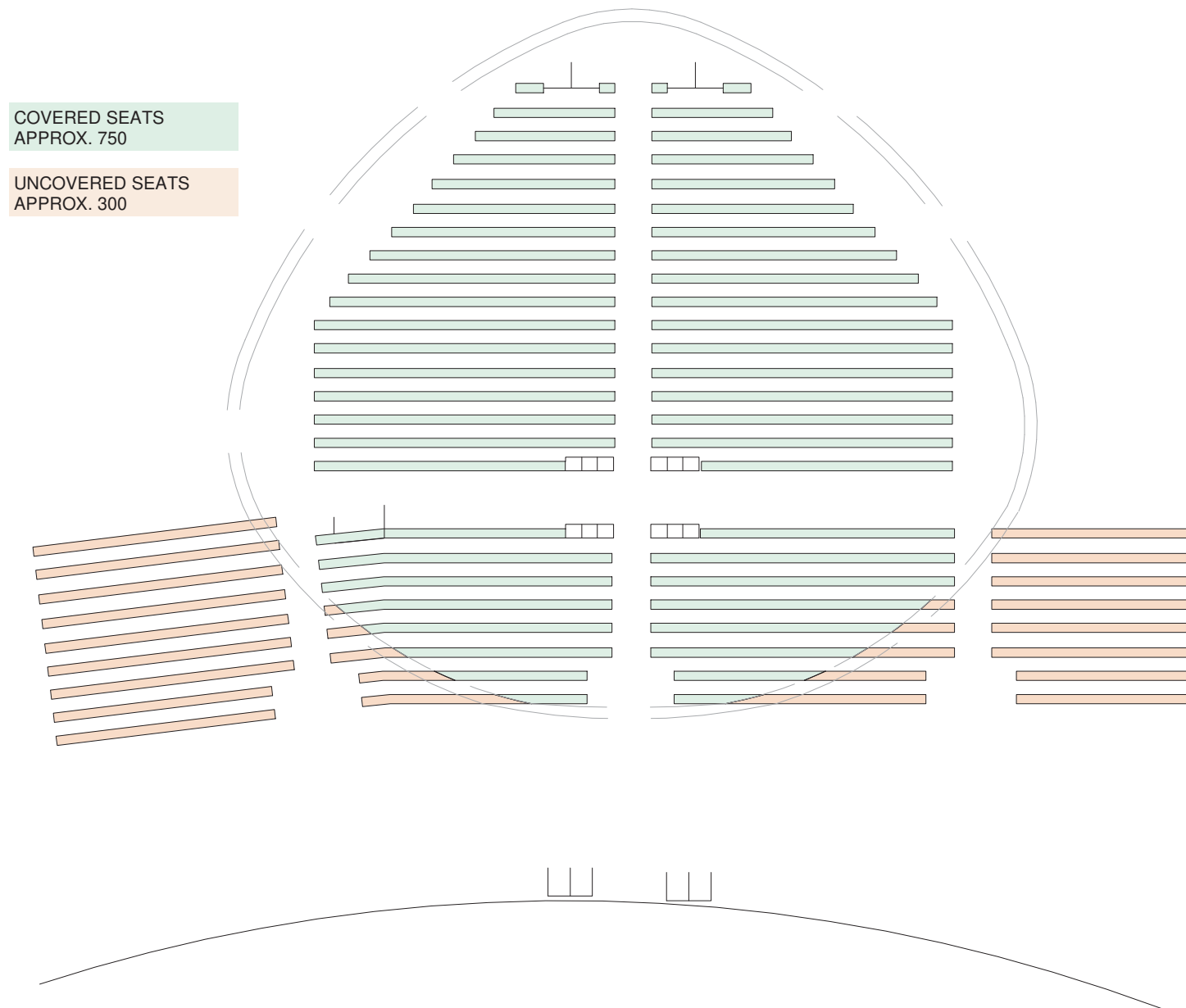


APPENDIX 02- IVANHOE PARK PAVILION & GRANDSTAND UPGRADE PROPOSAL

IVANHOE PARK PAVILION & GRANDSTAND UPGRADE PROPOSAL

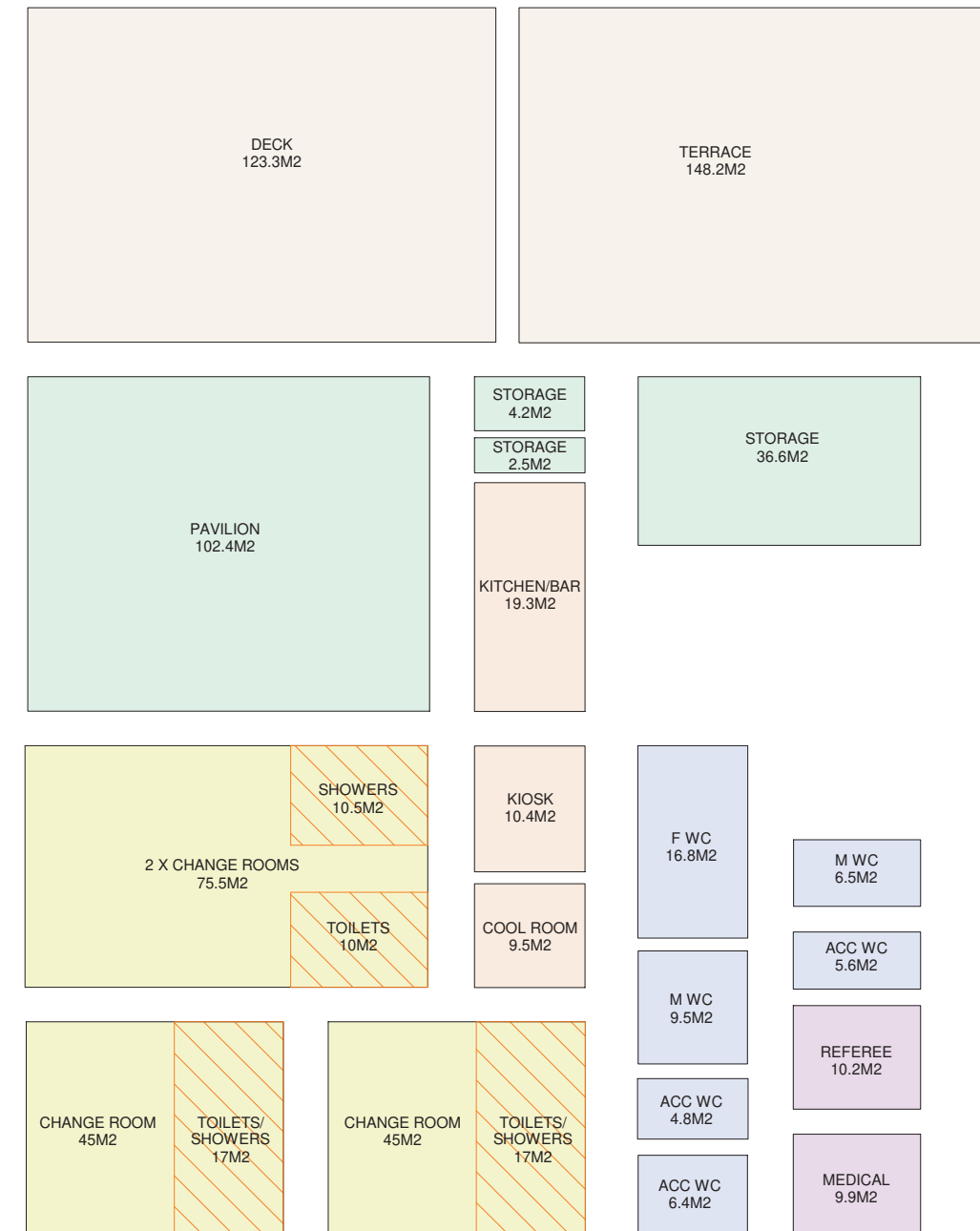


SCHEDULE OF AREAS EXISTING



EXISTING SEATING LAYOUT

1050 SEATS

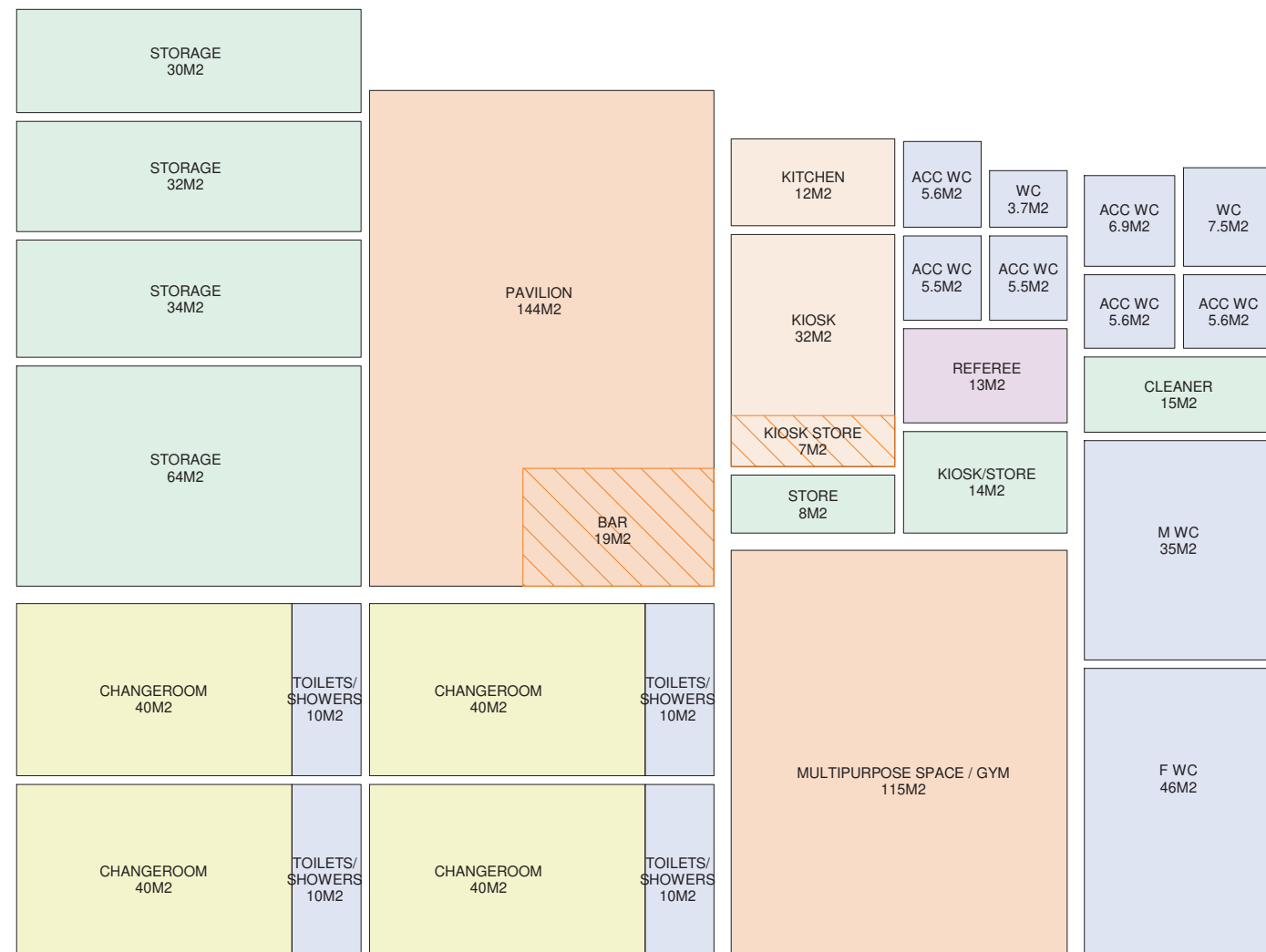


EXISTING FUNCTIONAL AREA MAP (420M2)

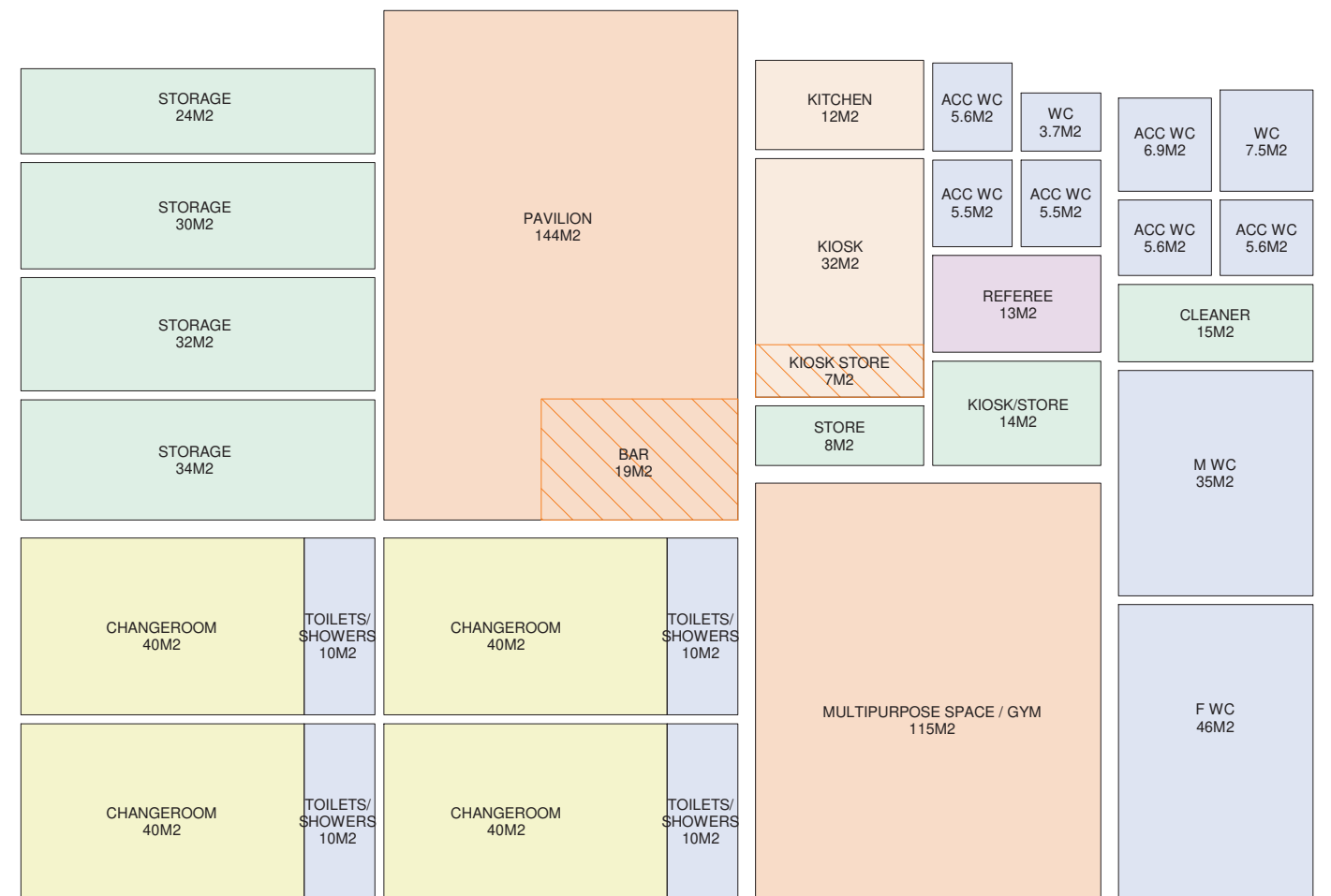
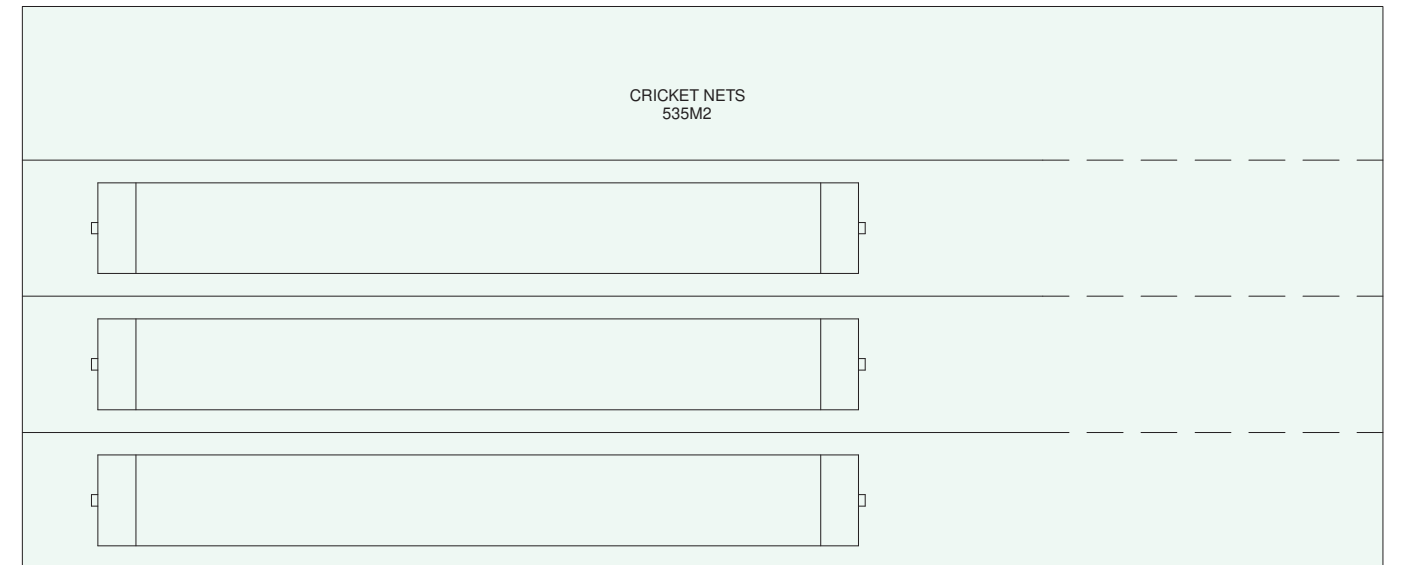
OUTDOOR AREA EXCLUDED

4 CHANGE ROOMS

SCHEDULE OF AREAS PROPOSED

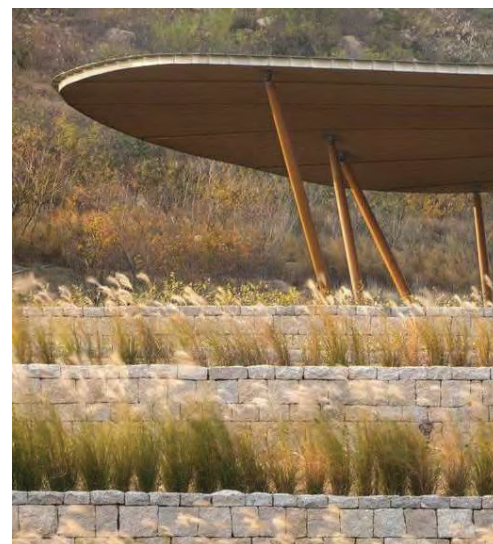


PROPOSED FUNCTIONAL AREA MAP OPTION 01 (840M2)

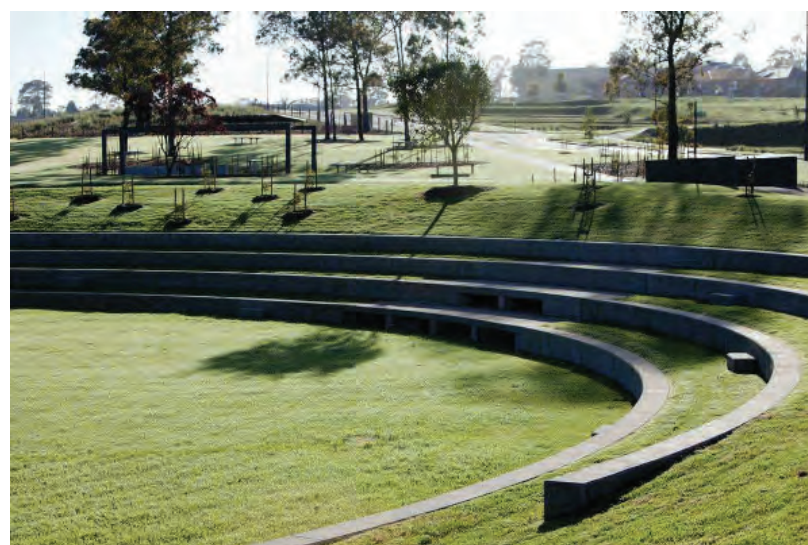
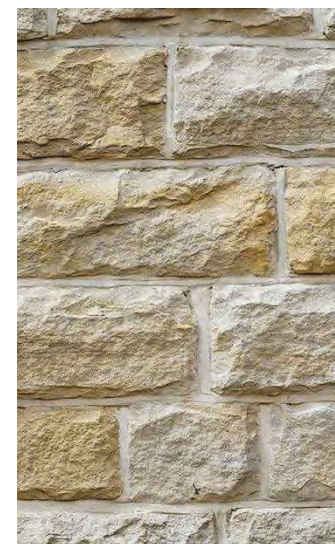


PROPOSED FUNCTIONAL AREA MAP OPTION 02 (1345M2)

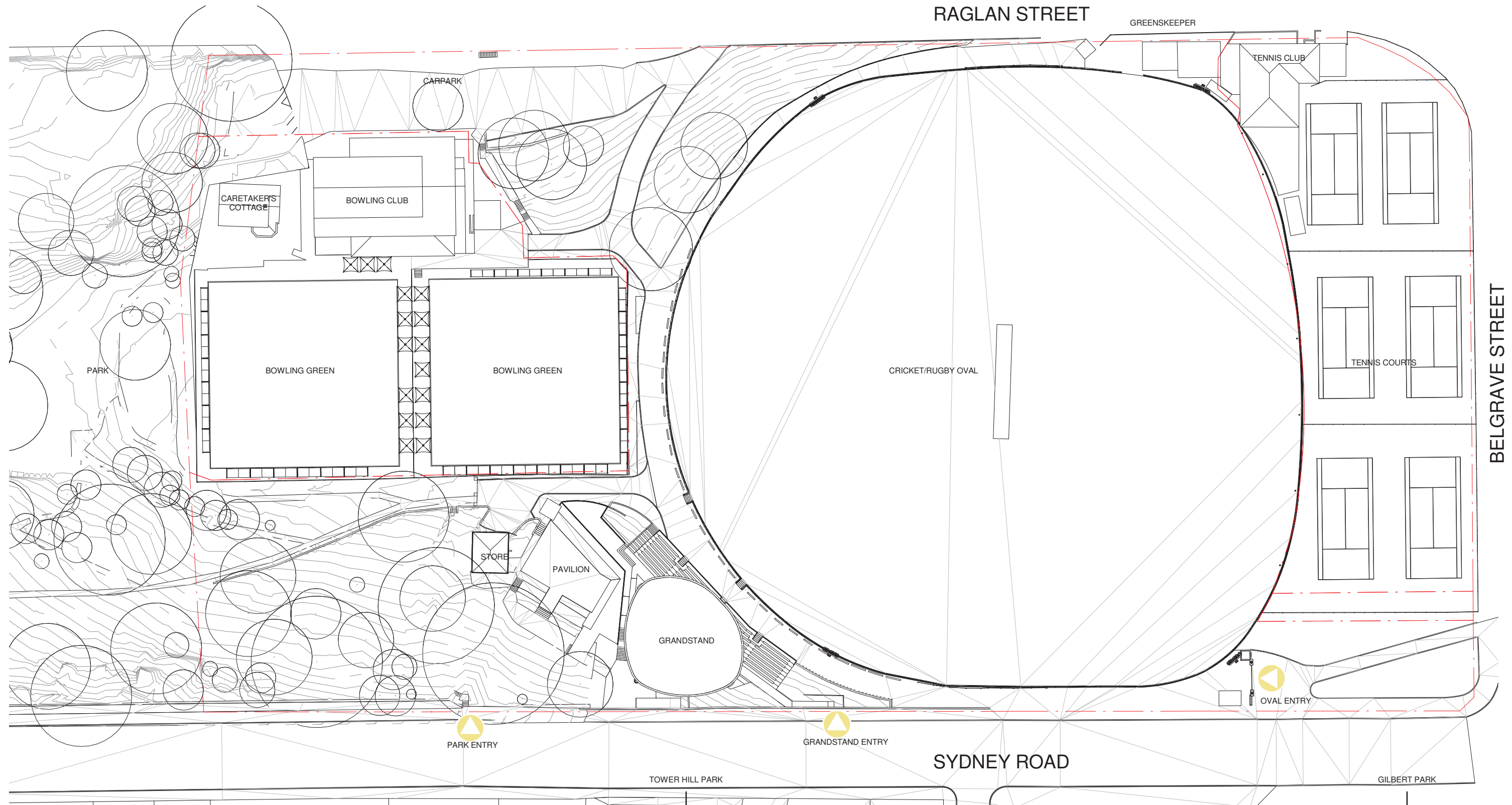
MATERIALITY, FORM AND TYPOLOGY



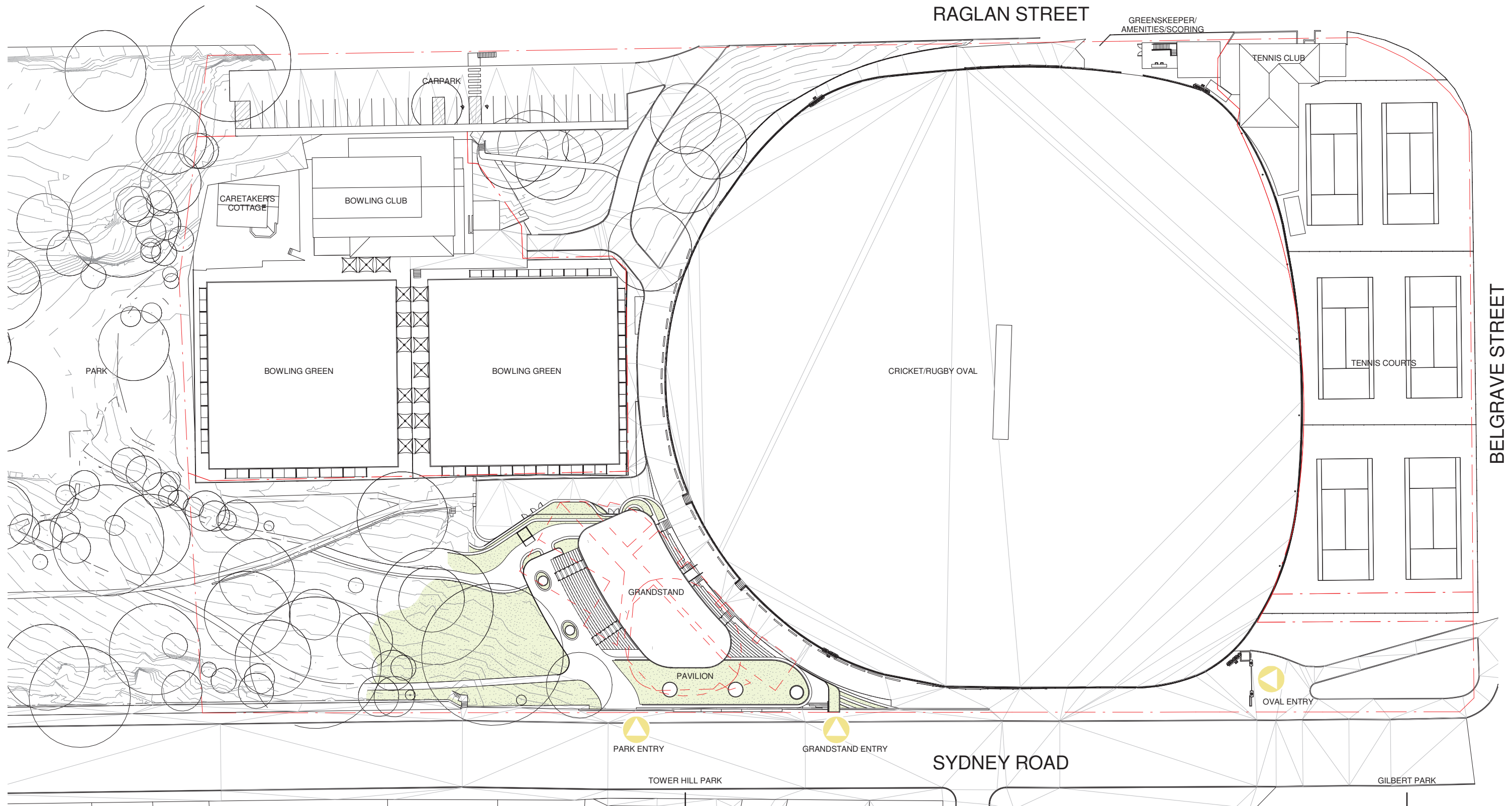
MATERIALITY, FORM AND TYPOLOGY



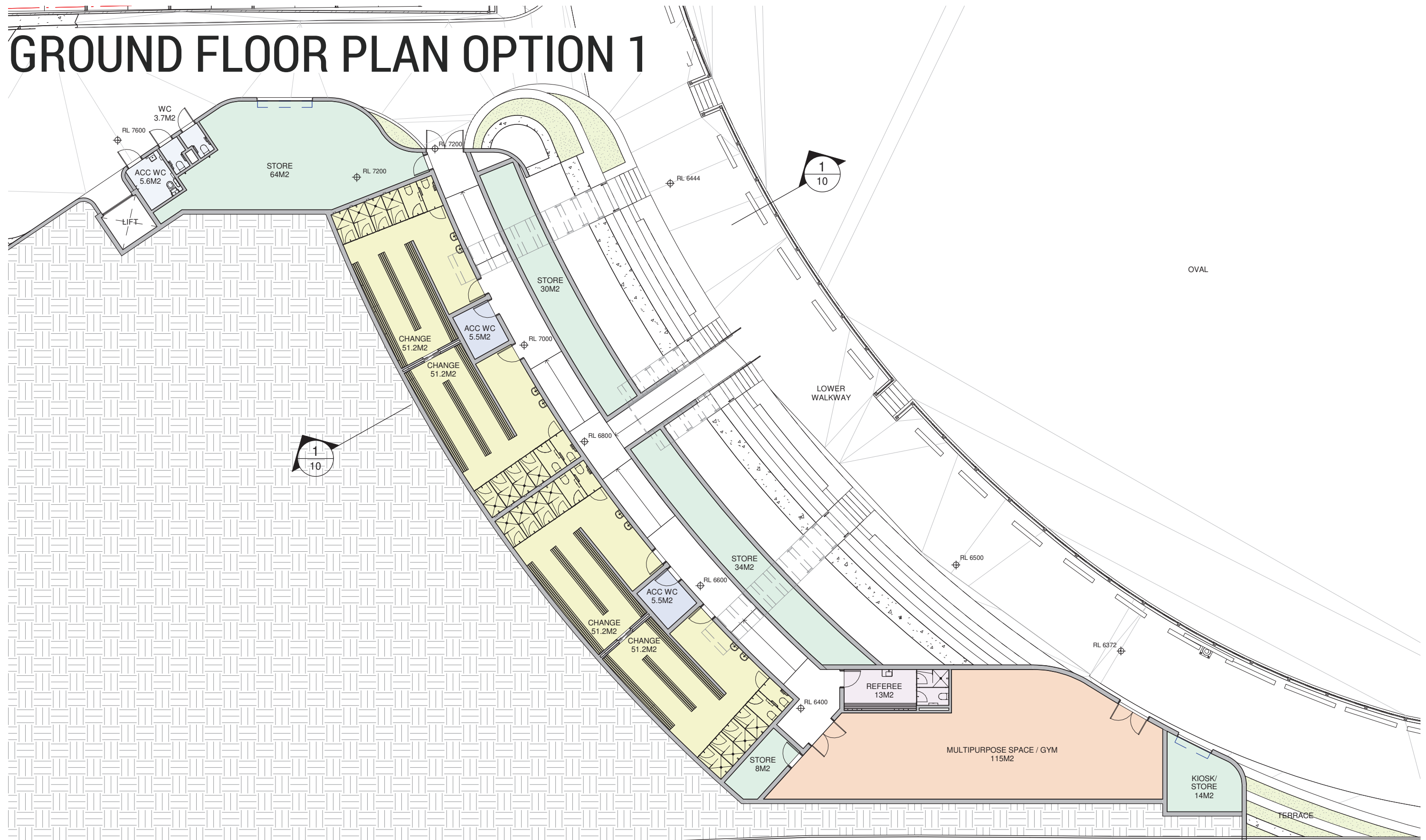
EXISTING SITE PLAN



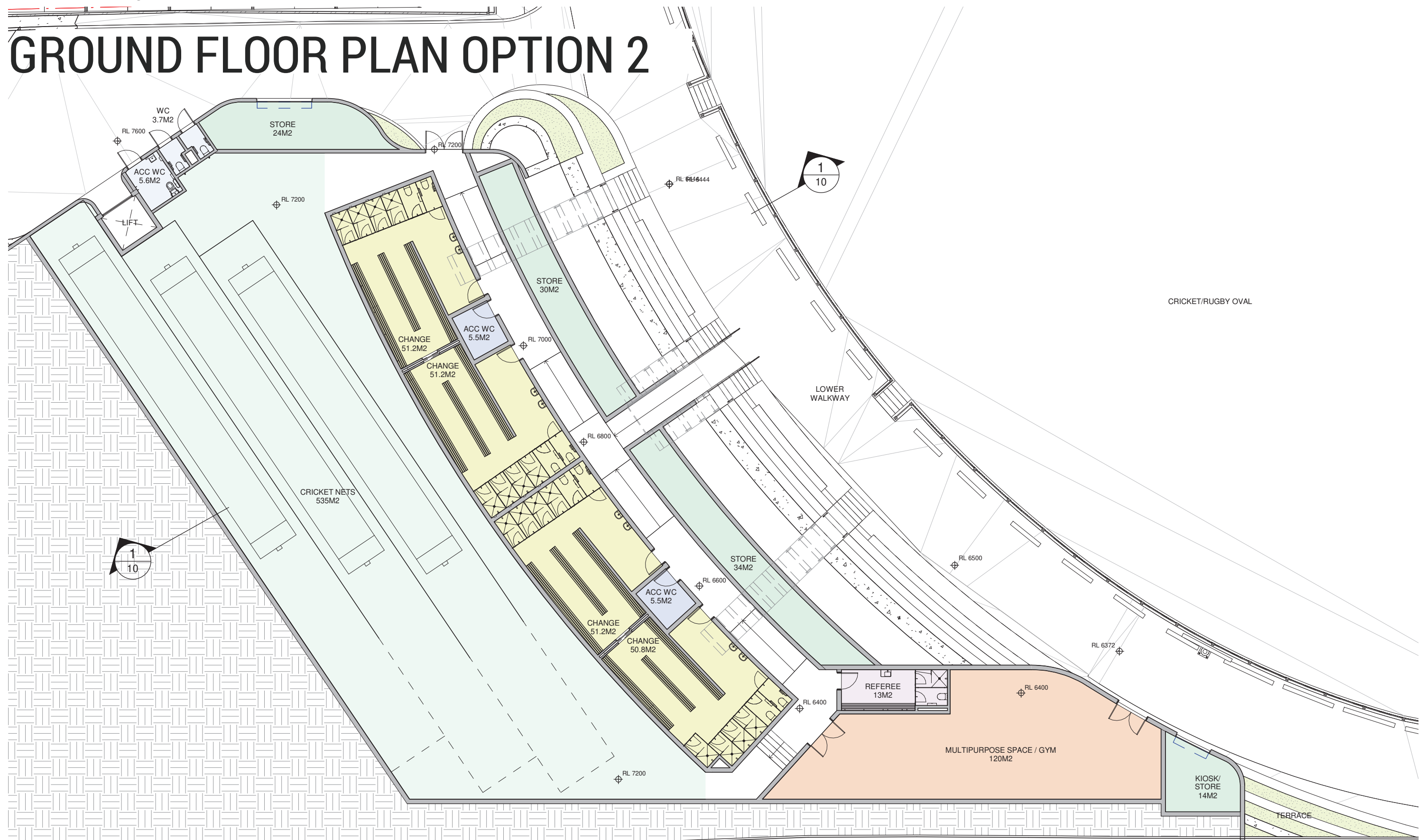
SITE PLAN

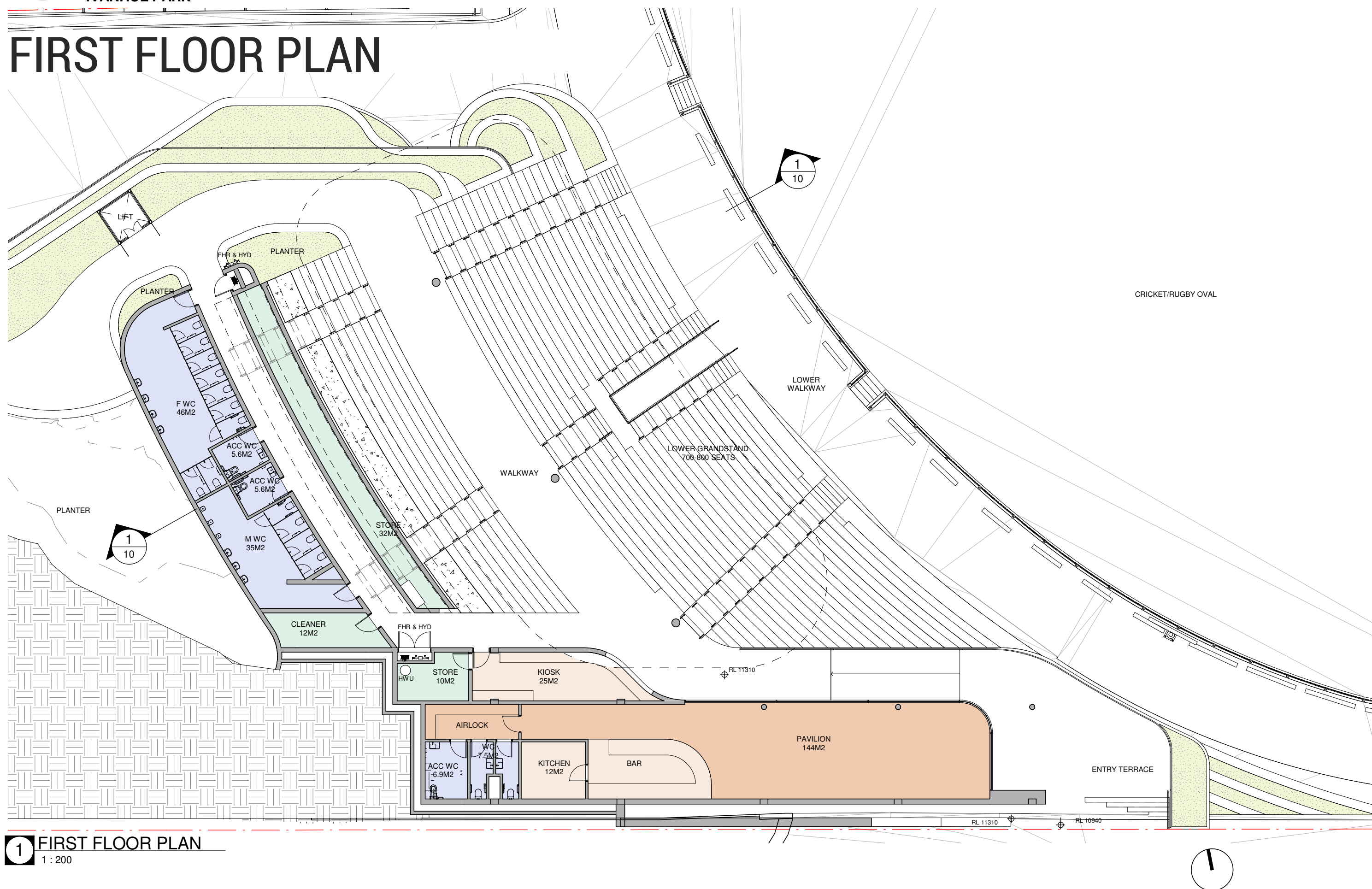


GROUND FLOOR PLAN OPTION 1



GROUND FLOOR PLAN OPTION 2



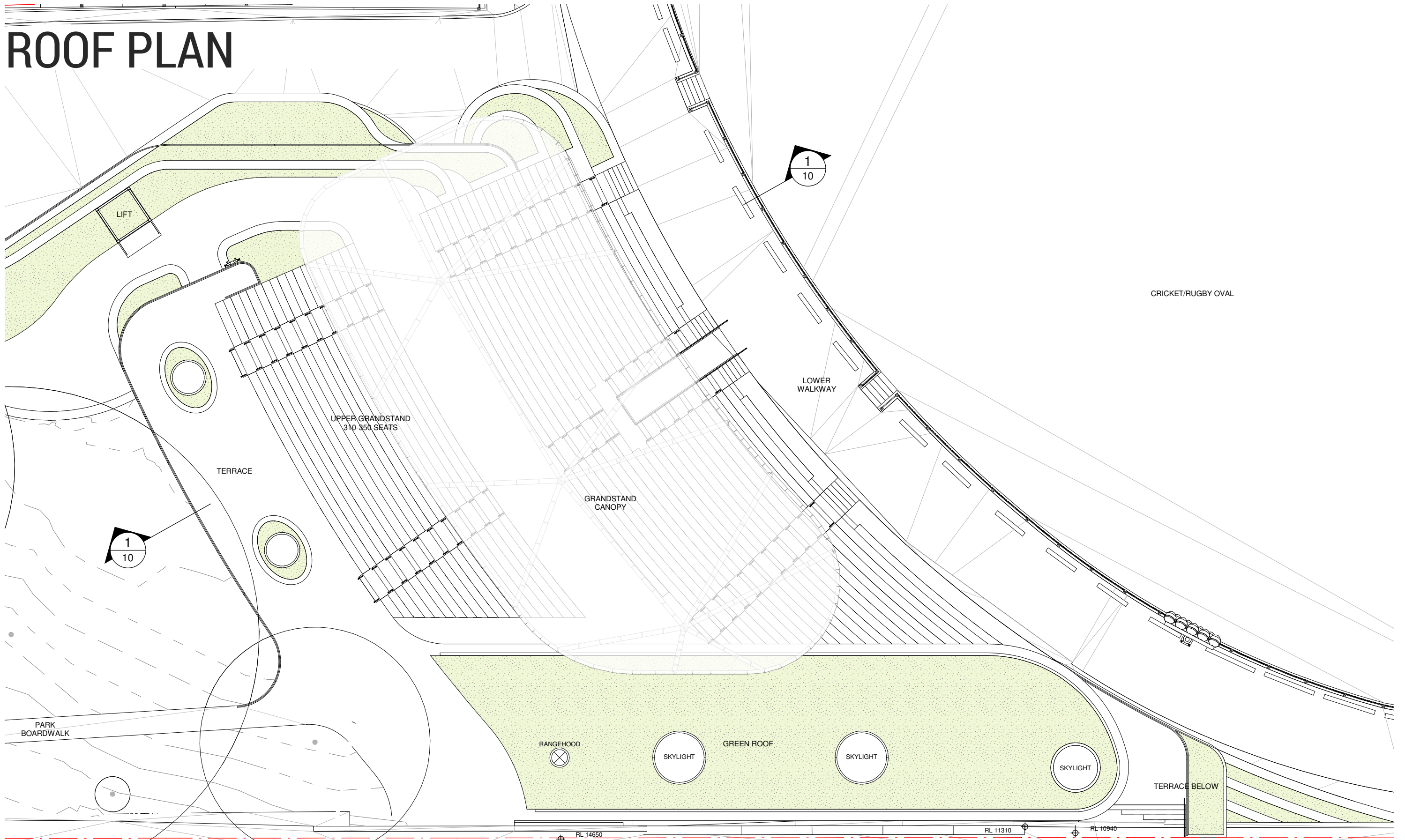




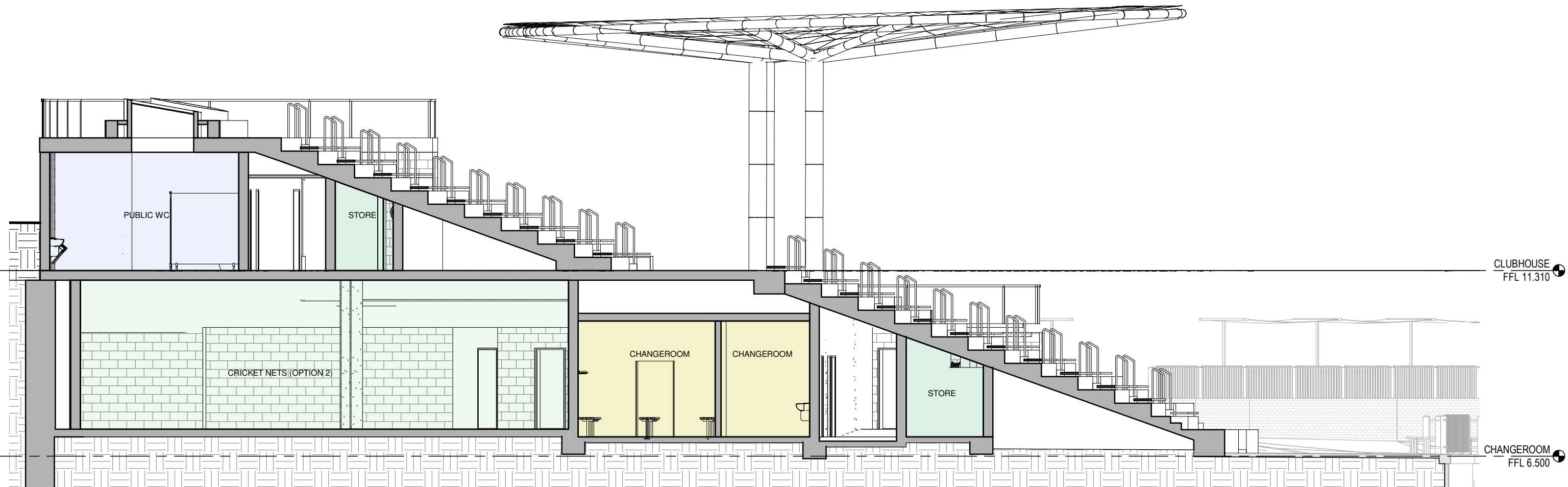
IVANHOE PARK

NBR ARCHITECTURE.

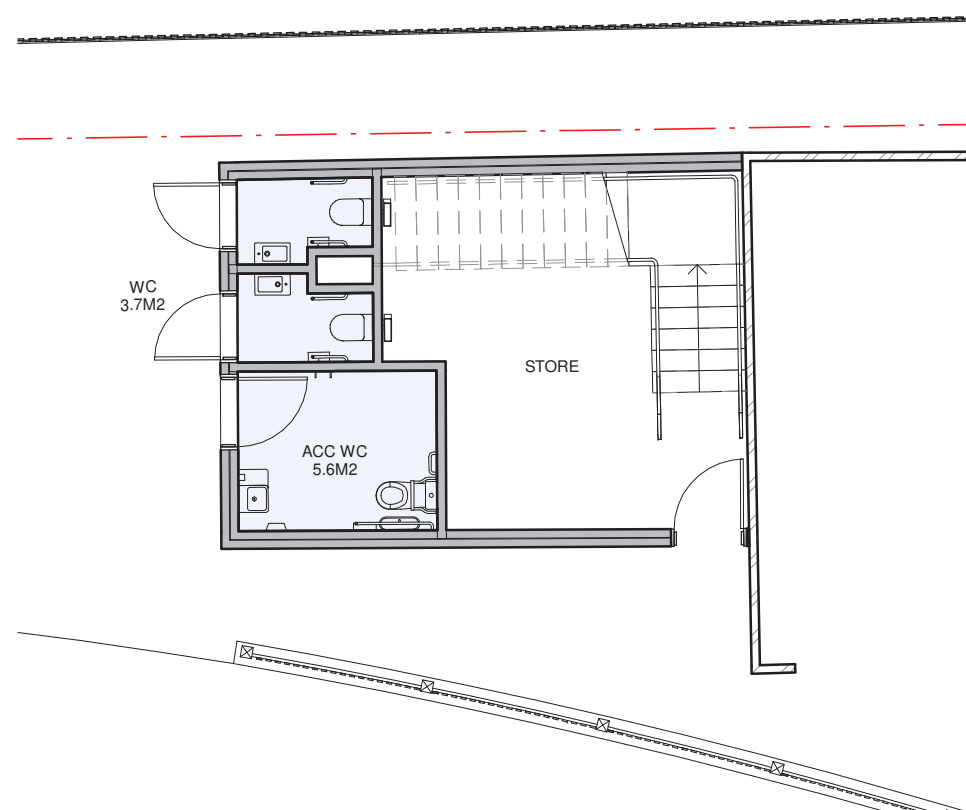
ROOF PLAN



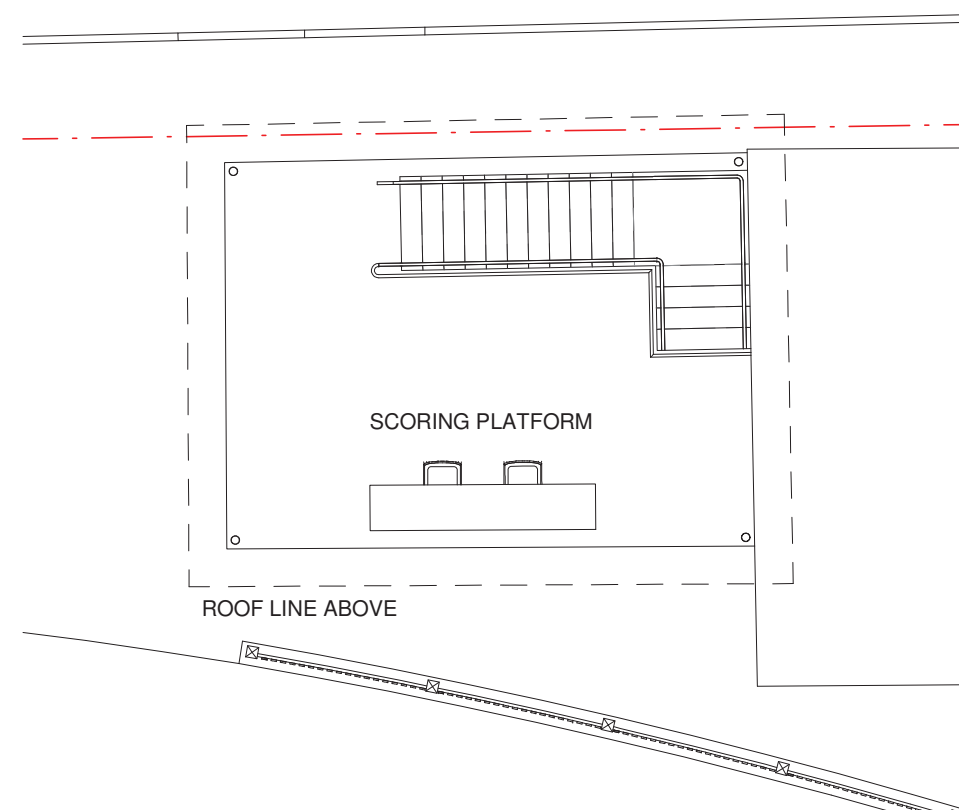
SECTION



RAGLAN ST AMENITIES & SCORING PLATFORM



1 GROUND FLOOR PLAN
1 : 100

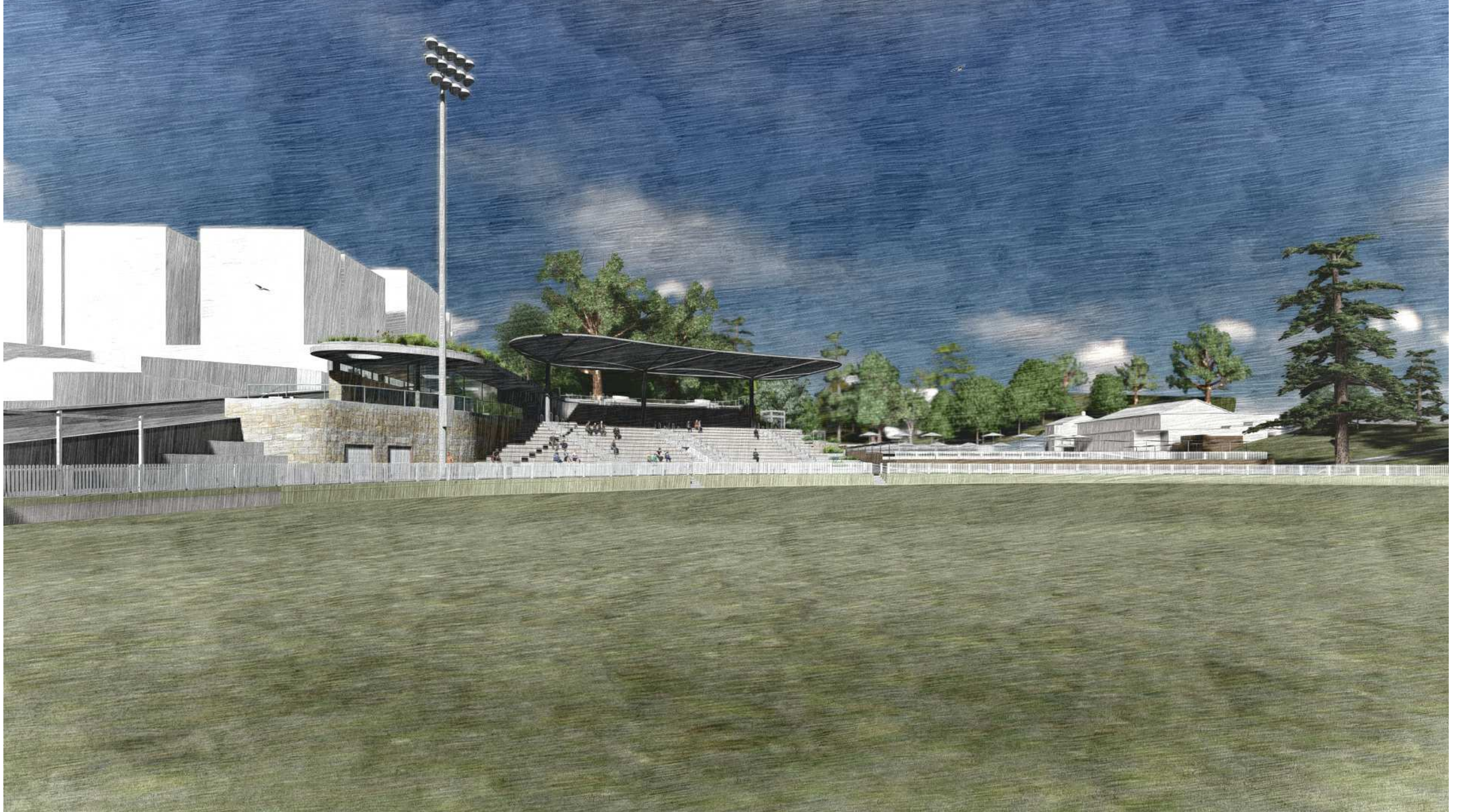


2 ROOF PLAN
1 : 100

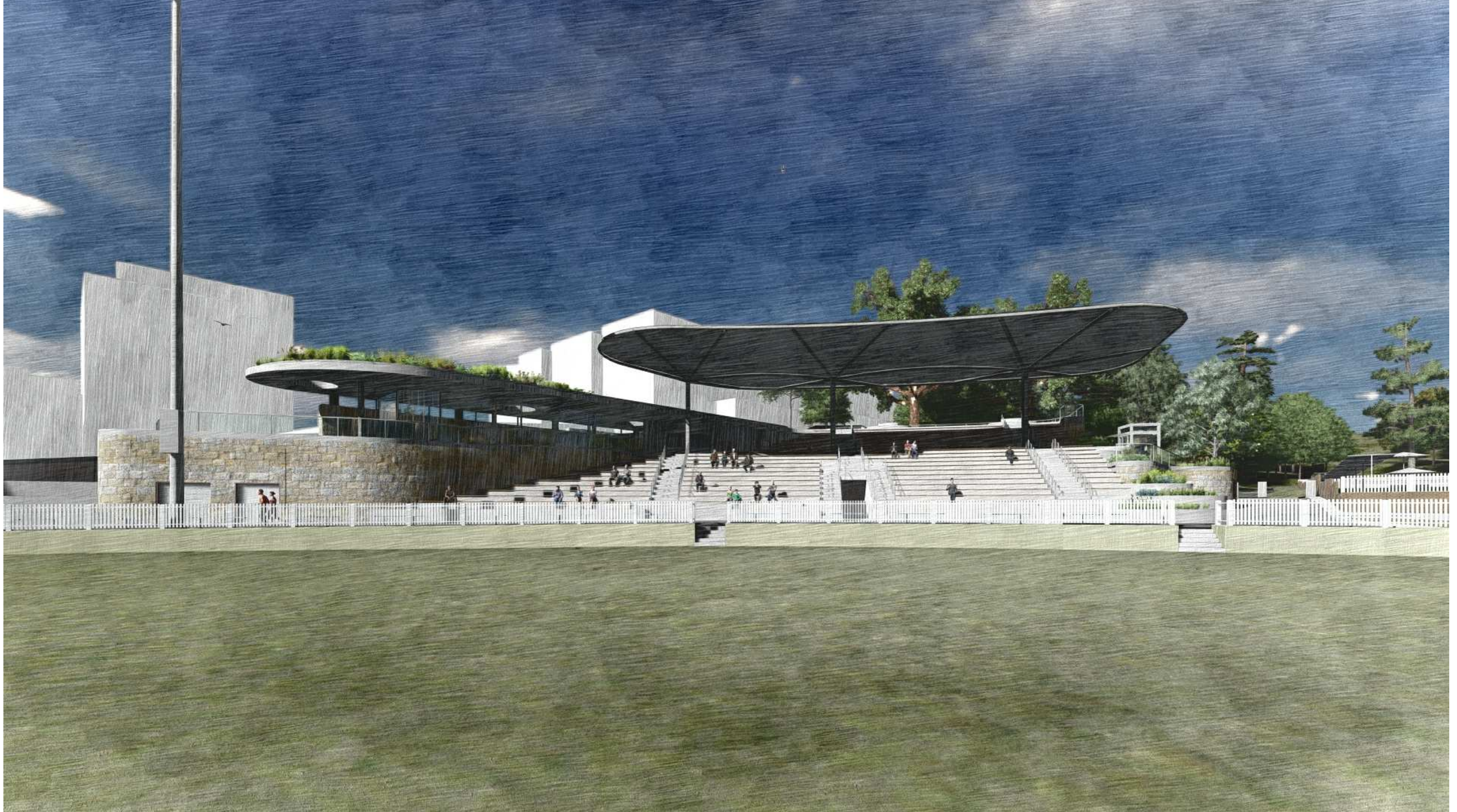
3D PERSPECTIVES



3D PERSPECTIVES



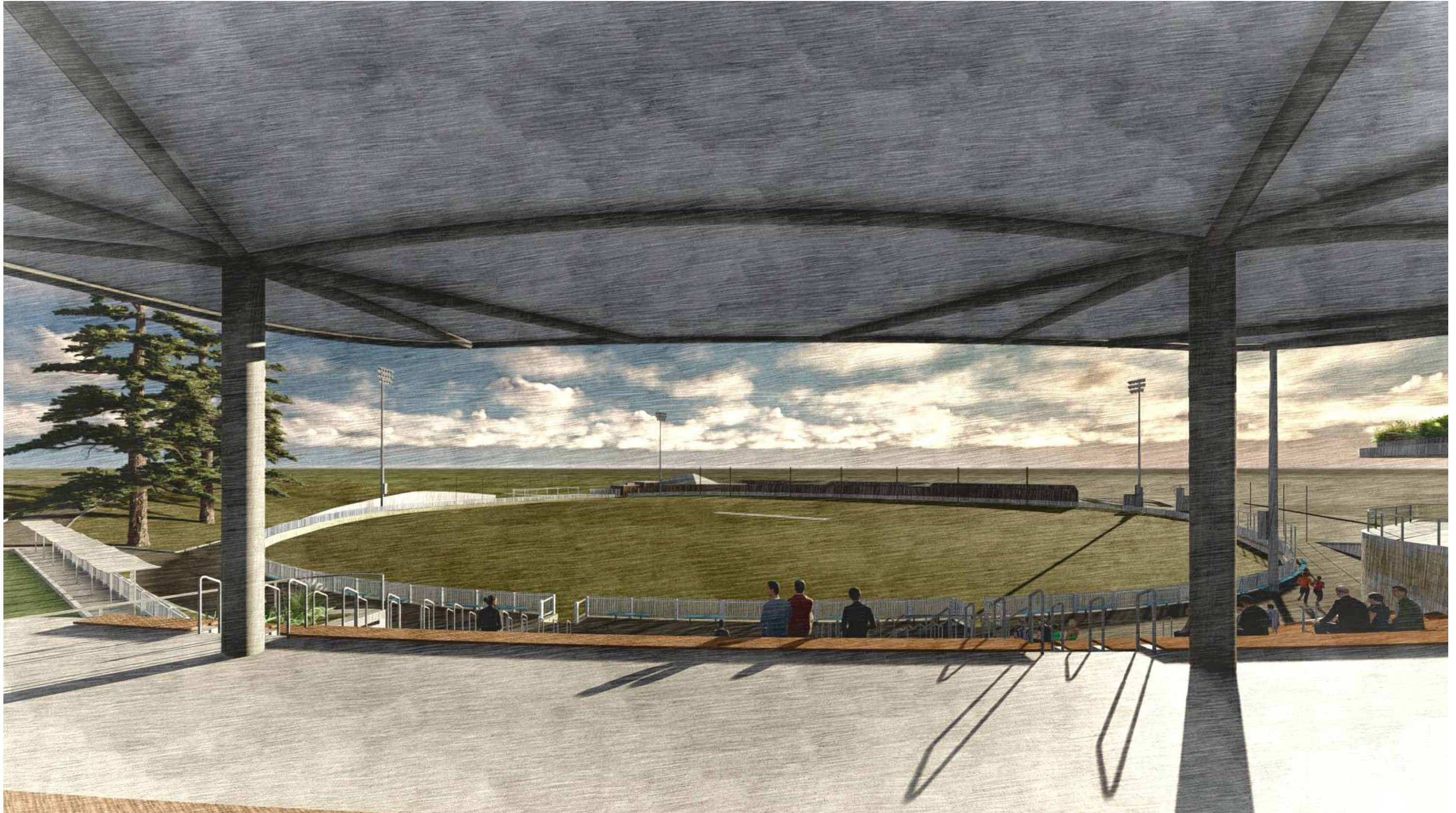
3D PERSPECTIVES



3D PERSPECTIVES



3D PERSPECTIVES



THIS PAGE IS INTENTIONALLY LEFT BLANK

APPENDIX 03- CASE STUDY: REDFERN PARK, SYDNEY

CASE STUDY

REDFERN PARK

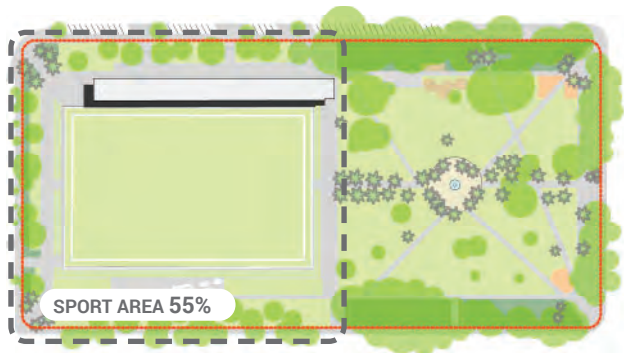
Redfern park is located on Elizabeth Street in Redfern, a major street that connects into the CBD.

Similar to Ivanhoe Park the site was originally designated and developed as an pleasure garden in the 1880's. Through its history the park included tennis courts, lawn bowls, gardens and now a rugby field with grandstand and accompanying facilities.

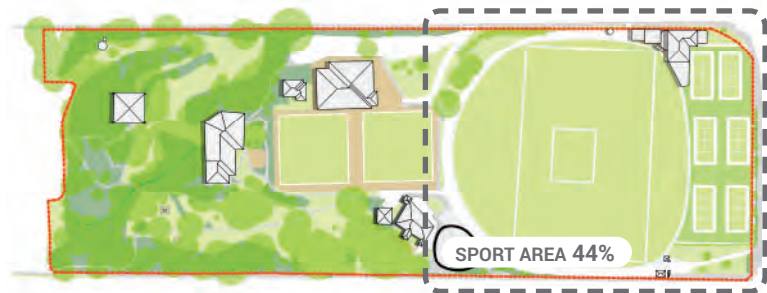
Redfern Park is defined by the clash of the Rugby Centre and a heritage focused formal park. However, there is a theatrical interface between the Rugby Centre and park creating a unique place. This interface is curated by the well thought fencing strategy with temporal fence lines/gates and clear circulation.

Redfern Park is also full of a range of uses supporting its local and regional users. These include the following:

- Off-leash dog zone
- Skate boarding park
- Basketball Courts
- Large community driven event space
- Informal park uses
- Water play
- Small community gatherings
- Barbecues / picnic facilities
- Public art and historic artifacts



Redfern Park : 46,400 m2



Ivanhoe Park : 48,050 m2



Event Mode



Historic Artifacts



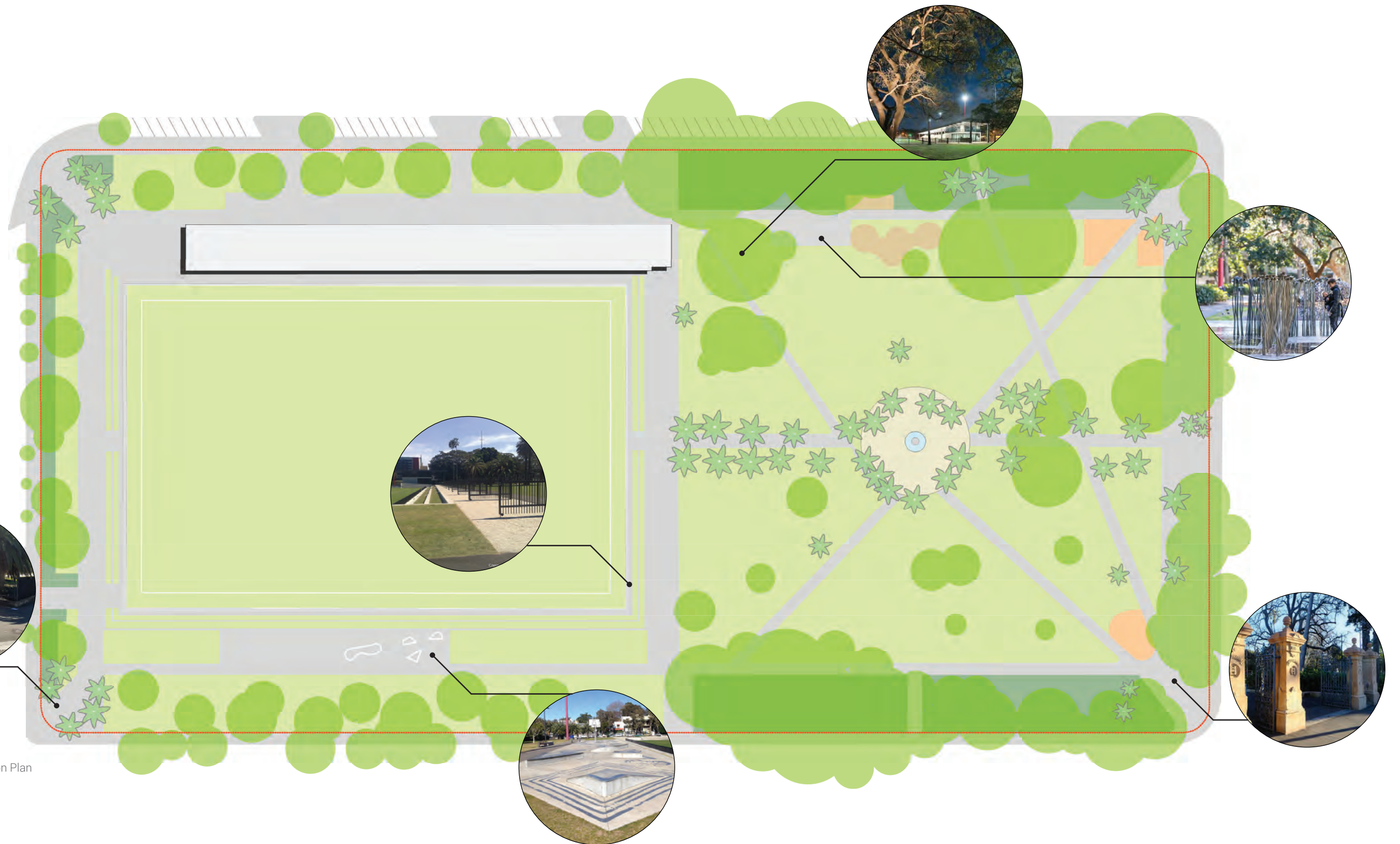
Gated Programs



Choir



Iconic Tree



Redfern Park Comparison Plan
 ✂ 1:1000 @ A3

DRAFT