

DRAFT

2.0 MASTERPLAN



MASTERPLAN

Ivanhoe Park will become a place that will harness and engage with the spirit of Manly becoming a destination for passive and active recreation.

It will encapsulate Manly's community life and culture for both present and future generations, creating an inclusive park that provides for all ages while maintaining it's connection to the essence of the past.

KEY

- 1

NEW ENTRY TO UPPER AND LOWER GRANDSTAND FROM SYDNEY ROAD.
- 2

RESTORATION OF HISTORIC GATES AND PAVED THRESHOLD INTO THE PARK. EXISTING FOOTPATH UPGRADED WITH GRANITE PAVERS.
- 3

RE-PLANTING OF HEDGE AND UNDER PRUNING OF TREES TO ENHANCE SIGHT LINES. NEW TENNIS BANNER WITH HERITAGE DESIGN.
- 4

NEW ACCESSIBLE DECK FOR SPECTATORS AND OUTDOOR CAFE SEATING. IMPROVED INTERFACE WITH STREET BY NEW PLANTING AND FENCING.
- 5

IMPROVED RAGLAN STREET ENTRY BY THE REMOVAL OF EXISTING BRICK ENTRY AND UPGRADED THRESHOLD PAVING WITH NEW PLANTING.
- 6

RE-CENTERING OF CRICKET PITCH.
- 7

REMOVAL OF HEDGE AND REPLACEMENT WITH LOW PLANTING. EXTERNAL FOOT PATH UPGRADED WITH GRANITE PAVERS.
- 8

CARPARK:
 - DEFINE PEDESTRIAN ZONE FROM RAGLAN STREET PEDESTRIAN ENTRY/STEPS TO CLUBHOUSE.
 - RECONFIGURE CARPARK FOR SAFETY AND ACCESS
 - REPLACE OLEANDER HEDGE AND MAINTAIN TO LOW HEIGHT TO IMPROVE SIGHT LINES.
- 9

ADDITIONAL SPECTATOR SEATING BOOK ENDED WITH PLANTING AREAS.
- 10

UPGRADED HERITAGE ENTRANCE WITH NEW PAVING, PLANTING AND RESTORED GATES.
- 11

RENOVATION OF CARE TAKERS COTTAGE WITH A NEW DECK FOR CAFE USE AND IMPROVED PUBLIC ACCESS THROUGH LAWN BOWLS.
- 12

NEW NATURE AND SENSORY PLAYGROUND UTILISING EMBANKMENT.
- 13

CHILDCARE BUILDING REPLACED WITH CENTRAL LAWN AND SANDSTONE TIERED AMPHITHEATRE.
- 14

ENHANCEMENTS TO ANZAC MEMORIAL AND SURROUNDS. LIFT CREPE MYRTLE CANOPY.
- 15

DRAINAGE CHANNEL NATURALISED WITH INCORPORATION OF NEW GROSS POLLUTANT TRAP. EXISTING WALLS DECONSTRUCTED AND PLANTED WITH NATIVES.
- 16

NEW BOARD WALK THROUGH GARDENS.
- 17a

TRAMWAY:
 - TRAMWAY INTERPRETATION ADOPTED FROM 2017 MASTERPLAN
- 17b

- CONTINUE TRAMWAY INTERPRETATION TO INTEGRATE INTO 2017 MASTERPLAN ADOPTION.
 - REPLACE EXISTING LOW SAFETY FENCE WITH INTERPRETATION PANELS.
 - UNDER- PRUNE AND SELECTIVELY REMOVE UNDERSTOREY PLANTING TO OPEN VIEWS TO BOWLING GREEN AND MANLY OVAL
- 18a

NEW RAMPED ENTRY FROM RAGLAN STREET. INCORPORATE A COVERED SHELTER.
- 18b

BENCH SEATING ALONG RETAINING WALL AND PATHWAY.
- 19a

UPGRADE PAVING TO GRANITE UNIT PAVING
- 19b

UPGRADE PAVING TO NEW ASPHALT PAVING WITH HALL OF FAME PLAQUES INSET INTO PAVING.
- 20

INTERPRETATION OF OLD SITE BOUNDARY
- 21

NEW 1.8M PALISADE FENCING
- 22

REPLACEMENT OF BENCH SEATING IN FRONT OF GRANDSTAND WITH CLASSIC PLAZA BENCH. REFER TO PAGE 38 FOR FURNITURE PALETTE.
- 23

RE-ALIGNMENT OF PATH WITH NEW SANDSTONE SEATING TERRACES INTEGRATED INTO SLOPED LAWN AREA.
- 24

MINOR REFURBISHMENTS OF SCOUT HALL EXTERIOR
- 25

LIFT CANOPY OF TREES BETWEEN CARPARK AND TRAMWAY.
- 26

NEW HANDRAIL TO SANDSTONE STAIRCASE.
- 27

GROSS POLLUTANT TRAP INSTALLED TO COLLECT LITTER AND DEBRIS ENTERING INTO THE PARK.
- 28

NEW BENCH SEATING TO NORTHERN SIDE OF OVAL
- 29

SANDSTONE THRESHOLD AND REFURBISHMENT OF GATE ENTRIES.
- 30

RENEW/ REPAINTING OF EXISTING ARRIS POST AND RAIL FENCE TO WESTERN PARK BOUNDARY IN CHARCOAL GREY TO MATCH PARK COLOUR PALETTE.
- 31

INVESTIGATE POTENTIAL FOR FUTURE PEDESTRIAN CROSSING THRESHOLD FOR CO-LINKING OPENSOURCE AND TRAFFIC CALMING.
- *NOTE:

IMPROVE POLE LIGHTING ALONG MAIN PATHWAYS. PARK LIGHTING AND SIGNAGE STRATEGY TO BE INTEGRATED THOUGHOUT THE PARK TO BE FURTHER EXPLORED.

Precedent

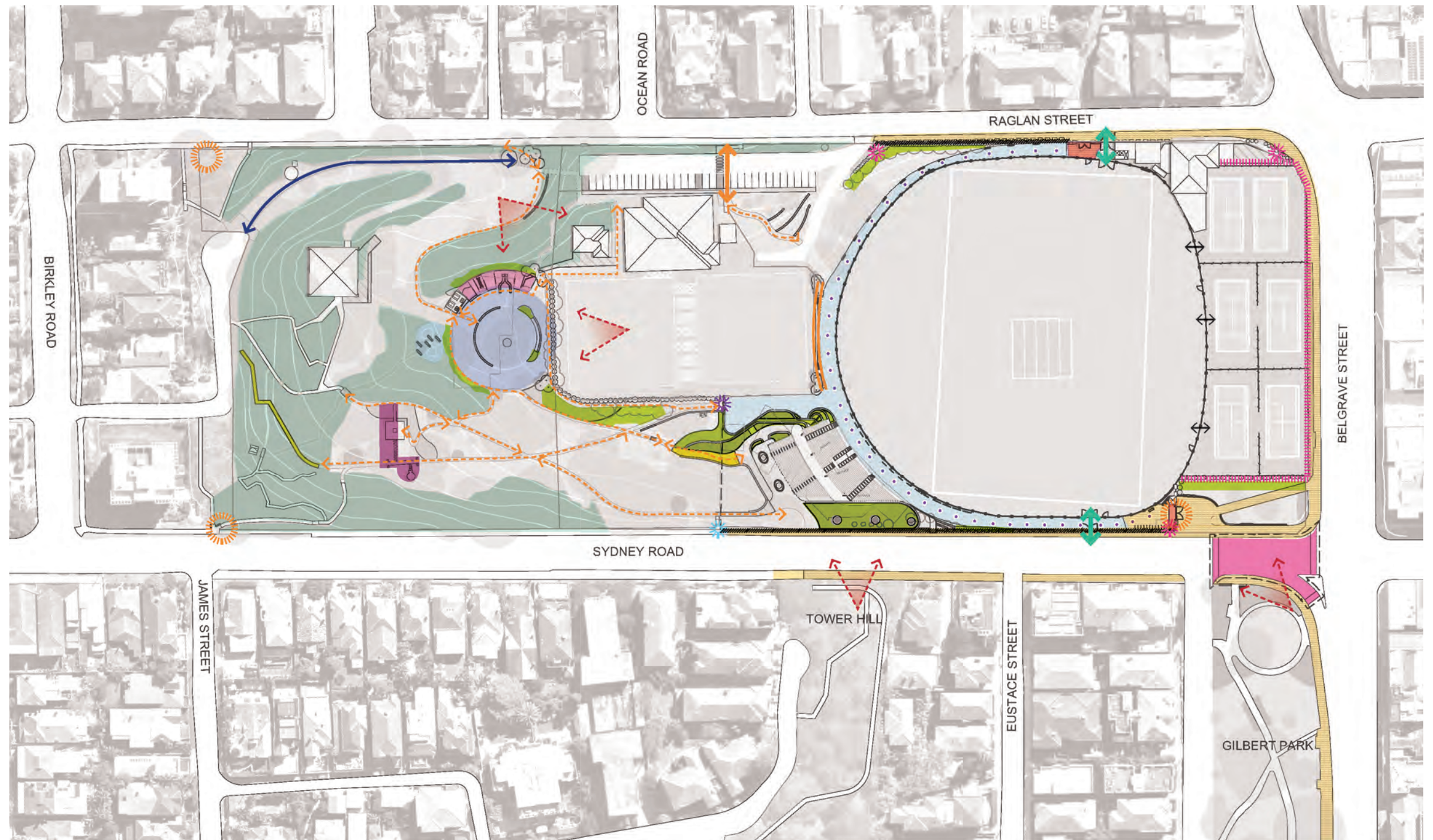




STRATEGIES AND INTERVENTIONS

Key strategies and interventions across the masterplan include;

- Improved pavements surrounding the lower portion of Ivanhoe Park and the oval to connect with Belgrave Street, Manly Wharf and Manly town centre.
- Improved arrival experiences through enhanced entry spaces on Sydney Road and Raglan Street.
- Improved visual connection to Gilbert Park by improved sight lines.
- Improved vehicle entries to Manly Oval.
- Improved appearance of the tennis court boundary with historic and contemporary player images on shade cloth.
- Enhanced pedestrian pathways and connections including circulation to tennis courts.
- New grandstand and amenities.
- New central lawn amphitheater, play and picnic area.
- Improved minor entries.
- Uniform materials and fixtures palette established throughout the park.
- Signage and lighting strategies to be considered and established throughout the park.
- Pedestrian improvements to include works to address community safety ie: accessibility, pedestrian pathways, clearer sight lines through gardens and improved lighting.
- Renew/Repainting of existing aris post and rail fence to western park boundary in charcoal grey to match park colour palette.



KEY

- REPLACE PAVING TO MATCH NBC PUBLIC DOMAIN PALETTE
- MAINTENANCE WORKS TO EXISTING PLANTING TO IMPROVE VIEWS
- PROPOSED PLANTING ASSOCIATED WITH NEW WORKS
- NEW GRANDSTAND AND ASSOCIATED WORKS
- NEW AMPHITHEATRE SEATING WITH VIEWS ACROSS BOWLING GREEN TO OVAL
- NEW PROPOSED NATURE PLAYGROUND
- NATURALISED TREATMENT TO CANAL
- PROPOSED BOARDWALK OVER EXISTING TREE ROOT ZONES CONNECTING CLUBHOUSE TO THE REST OF THE PARK
- LANDSCAPE TREATMENT AROUND SUNDIAL AND WAR ME-MORIAL
- NEW ACCESS PATHWAYS
- PROPOSED BLEACHER SEATING
- NEW ASPHALT PAVING WITH WALK OF FAME
- UPGRADED DRIVEWAY AND MAINTENANCE ACCESS ONTO OVAL
- PROPOSED NEW PALISADE FENCING
- GRAPHIC MESH BANNERS TO REPLACE EXISTING TENNIS MESH FENCING
- IMPROVEMENTS MADE TO EXISTING GATE ENTRIES
- TRAMWAY ADOPTION FROM IVANHOE BOTANIC GARDENS FINAL MASTER-PLAN (JULY 2017)
- NEW SECURE GATE ENTRIES ASSOCIATED WITH NEW BUILDING WORKS
- NEW SIGNAGE OPPORTUNITIES
- NEW SANDSTONE FEATURE PAVING
- SYMBOLIC INTERPRETATION OF OLD SITE BOUNDARY
- NEW GATES INSTALLED TO TENNIS COURT FENCING TO ALLOW ACCESS BETWEEN COURTS
- ESTABLISH AND STRENGTHEN KEY VIEWS ACROSS IVANHOE PARK



Amphitheater



Nature Play



Graphic Banners



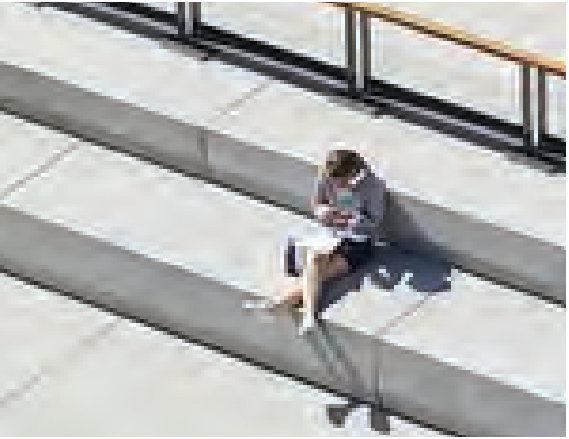
Walk of fame



Sandstone Terraces



Open grandstand with associated planting



Bleacher Seating



Gate entries

DETAIL DESIGN MOVES

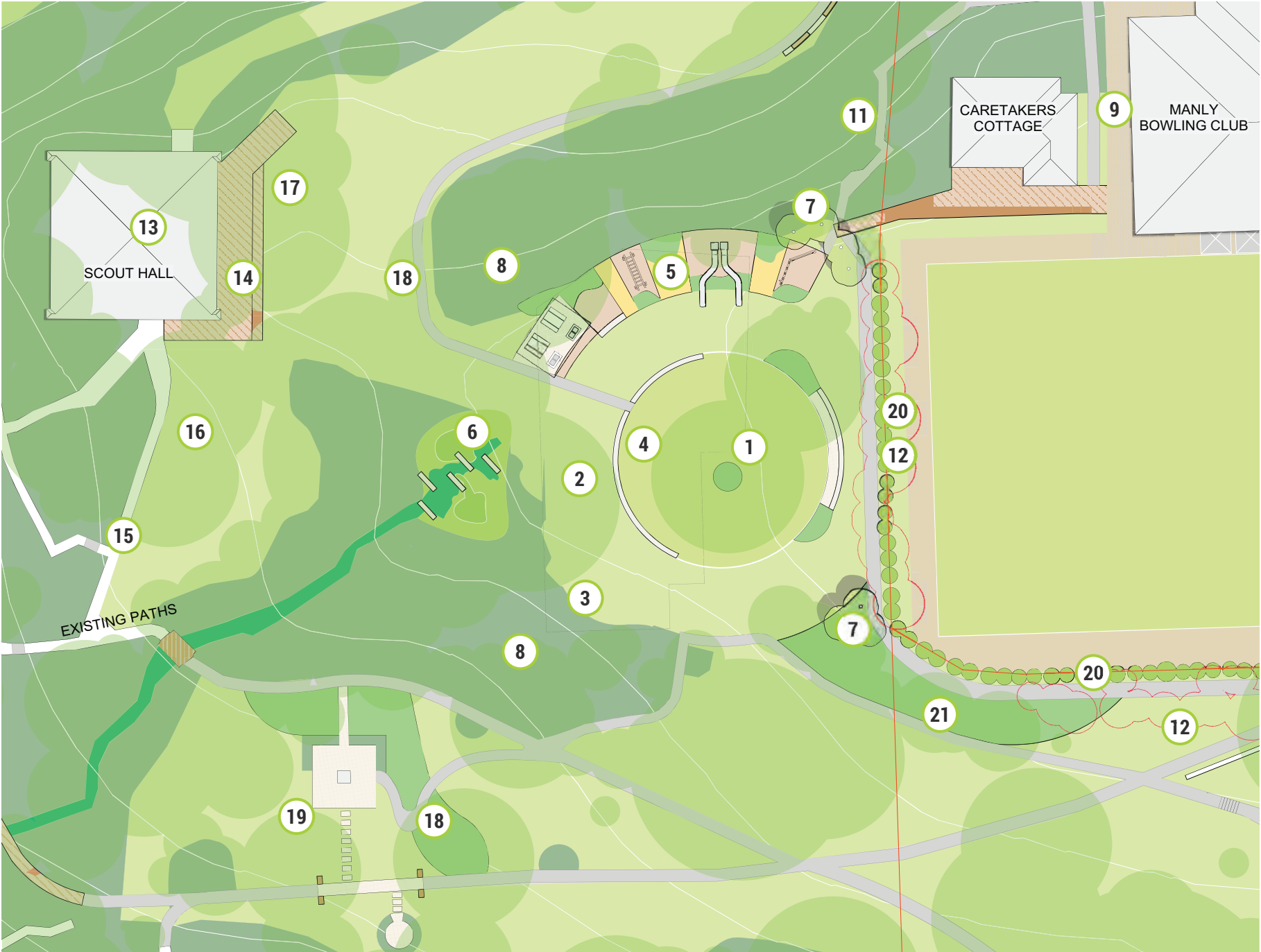
CENTRAL LAWN

At the centre of the park is a natural gully in which is located the scout hall, water course and the existing childcare centre (that is to be demolished) and a small playground and sensory garden. With the demolition of the childcare centre, opportunity exists to enhance this area with a lawn amphitheater, new children's nature play space and associated BBQ and picnic shelter. Improved access is proposed with a new accessible link to the bowling club and refurbished stair to the carpark.

Areas of rock cuttings to the rear of the child care building are to be "naturalised" by returning this area to previous levels. Existing rock outcrops are to be emphasised by removing weeds and overgrown shrub and groundcover planting. The existing drainage line and trash rack are to be improved.

The area is to be made safe with new lighting both up lighting to feature trees and area lighting with pole top fittings.

Precedent



The Central Lawn detailed plan

- 1 RETAIN EXISTING TREES AND UPLIGHT
- 2 LEVEL LAWN AREA
- 3 RESHAPE/NATURALISE SOUTH WEST CORNER OF EXISTING CHILDCARE CENTRE TO BLEND LEVELS OF PARK INTO TERRACE. RETAIN NATURAL STONE OUTCROPS.
- 4 NEW AMPHITHEATRE SPACE WITH STAGE AREA
- 5 NEW NATURE PLAY AREA WITH PICNIC SHELTER AND BBQ FACILITIES INTEGRATING WITH EMBANKMENT AND ROCK CUTTING.
- 6 NATURALISATION OF DRAINAGE CHANNEL TO BE CONSIDERED
- 7 KENTIA PALM PLANTING TO FRAME EITHER END OF BOWLING GREEN WORKING WITH EXISTING KENTIA PALMS.
- 8 SELECTIVELY CLEAR MONSTERIA AND OTHER PLANTING TO EXPOSE ROCK OUTCROPS.
- 9 IMPROVED STAIR ACCESS TO CARPARK.
- 10 NEW LEVEL CONNECTION FROM AMPITHEATRE SPACE TO CARETAKERS COTTAGE AND BOWLING CLUB
- 11 RENEW EXISTING STAIR CONNECTION.
- 12 TREE REMOVAL TO OPEN VIEWS TO BOWLING GREEN FROM PARK.
- 13 FASCADIE TREATMENTS TO SCOUT HALL TO INCLUDE TIMBER BATTENING, PAINTED FINISHES AND GREEN WALLS TO BREAK DOWN MASS OF BUILDING.
- 14 NEW DECK AT LOWER LEVEL TO WRAP AROUND BUILDING, PROVIDE ACCESS TO EXISTING GROUND TO IMPROVE BUILDING USE AND AMENITY.
- 15 IMPROVE PATHWAY CONNECTION FROM SCOUT HALL TO ANZAC MEMORIAL AND TRAMWAY.
- 16 UPLIFT AND THIN CANOPY OF LARGE TREES TO EAST OF HALL AND RE-TURF WHERE REQUIRED.
- 17 REMOVE NON-SIGNIFICANT TREES.
- 18 NEW ACCESSIBLE PATHS IN CURVED FORMATION.
- 19 MEMORIAL TO BE SHIFTED AND ENHANCED WITH LARGER PAVED SURROUND AND LOW STONE WALLS TO ACCOMMODATE CHANGE IN LEVELS. USE RED BRICK TO MATCH MEMORIAL GATES IN EDGING OR LOW GARDEN WALLS.
- 20 REPLANTED LOW HEDGE MAINTAINED AT 1.0M HIGH ALONG WIDENED FOOTPATH
- 21 WILD FLOWER DISPLAY GARDEN BEDS FRAMING MAIN PATH.

RAGLAN STREET ENTRANCE

The existing entry is to be enhanced with the demolition of the existing ticket turnstile structure, removal of shrub planting to create an open and inviting forecourt. New accessible and unisex toilets are to be constructed within the greenkeepers store area. Emergency vehicle and pedestrian access to the oval is to be improved. A new roller door entry from Raglan Street to the main green keepers shed, with new soil store is proposed. Refurbishment of the green keepers building including facade treatment could incorporate a rooftop platform for score keepers and or TV camera location.

The footpath on Raglan Street is to be widened with the removal of a fence and lowering of site levels. New granite paving to match Belgrave Street is to be installed and extend into the park with new seating benches for spectators.

Precedent



Raglan Street entrance detailed plan

1:400 @ A3

- 1 NEW ENTRY FORECOURT WITH REMOVAL OF EXISTING TURNSTILE BOOTH AND INSTALLATION OF NEW GATES
- 2 NEW 1.8M PALISADE FENCING INSTALLED ALONG RAGLAN STREET.
- 3 SANDSTONE THRESHOLD AND GRANITE FORECOURT.
- 4 NEW ASPHALTIC PAVING WITH HALL OF FAME INLAYS
- 5 NEW SIGNAGE ON RAGLAN AND BELGRAVE STREET CORNER WITH ASSOCIATED LOW HEDGE PLANTING AT 1.0M HIGH.
- 6 REMOVAL OF EXISTING OLEANDER SHRUBS HEDGE PLANTING MAINTAINED AT 1.8M HIGH.
- 7 NEW GATES TO BE INSTALLED TO ALLOW SPECTATORS ACCESS TO OTHER COURTS VIA OVAL DURING COMPETITIONS.
- 8 NEW GRANITE UNIT PAVING TO MATCH COUNCIL'S PUBLIC DOMAIN GUIDELINES.
- 9 RECONFIGURE EXISTING STORAGE AREA TO INCORPORATE AN ACCESSIBLE WC AND POSSIBLE UNISEC WC (SPACE PERMITTING). INCLUSION OF BIN STORAGE AREA AND NEW ROLLER DOOR.
- 10 NEW ROLLER DOOR ENTRY TO GREEN KEEPERS STORE
- 11 NEW PEDESTRIAN ACCESS GATE ONTO OVAL NEXT TO EXISTING GATES
- 12 EXISTING ROOF TO BE MODIFIED TO ACCOMODATE SCORE KEEPERS PLATFORM / TV CAMERA LOCATION.

1:400 @ A3

SYDNEY ROAD ENTRY

The arrival experience to the park could be enhanced with potential paved pedestrian zone aligned to Gilbert Park. This gesture strengthens the connection between the two parks and the Manly town centre. Material and plant species seen in Gilbert Park will feature in the entry forecourt including low sandstone edging and timber bench seating. The demolition of the existing brick ticket booth, restoration works, new paving and sandstone threshold at the Merrett Gates enhances this historic entry.

- 1 INVESTIGATE POTENTIAL FOR FUTURE PEDESTRIAN CROSSING THRESHOLD FOR CO-LINKING OPENSOURCE AND TRAFFIC CALMING.
- 2 RAISED SANDSTONE EDGING TO MATCH GILBERT PARK.
- 3a REMOVE CALLISTOMEN PLANTING AND REPLACE WITH 1.8M HEDGE TO MATCH GILBERT PARK
- 3b PLANT 1.0M HEDGE BETWEEN TENNIS COURT FENCE AND MERRETT GATES TO ALLOW VIEWS THROUGH TO MANLY OVAL.
- 4 NEW ALIGNMENT OF LAWN EDGE INTEGRATED WITH BENCH SEATING TO OPEN UP PLAZA SPACE INFRONT OF MERRETT GATES.
- 5 REPLACE EXISTING ASPHALTIC PAVING WITH GRANITE UNIT PAVING IN ACCORDANCE WITH COUNCIL PUBLIC DOMAIN GUIDELINES.
- 6 INSTALL BIKE PARKING.
- 7 SANDSTONE PAVED THRESHOLD.
- 8 NEW PALISADE FENCING INSTALLED ALONG SYDNEY ROAD ON SANDSTONE HOB.
- 9 NEW GRANITE UNIT PAVING TO MATCH COUNCIL'S PUBLIC DOMAIN GUIDELINES.
- 10 LOCATION FOR PARK'S STATE HERITAGE LISTING PLINTH/PLAQUE.
- 11 NEW SIGNAGE.
- 12 RESTORE MERRETT SANDSTONE AND REINSTATE METAL GATES, INCLUDE UPLIGHTING.
- 13 TREE AND GARDEN MAINTENANCE ACTIVITIES TO IMPROVE VIEWS FROM GILBERT PARK AND BELGRAVE STREET INTO IVANHOE PARK.



Sydney Road Entrance detailed plan

Precedents



THE PAVILION

The Pavilion Precinct will provide a new clubhouse and grandstand, creating new entrances into the park along Sydney Road while seamlessly integrating the new building into the landscape of Ivanhoe Park.

For further detailed information regarding the pavilion, refer to Appendix 01- Detailed site investigations

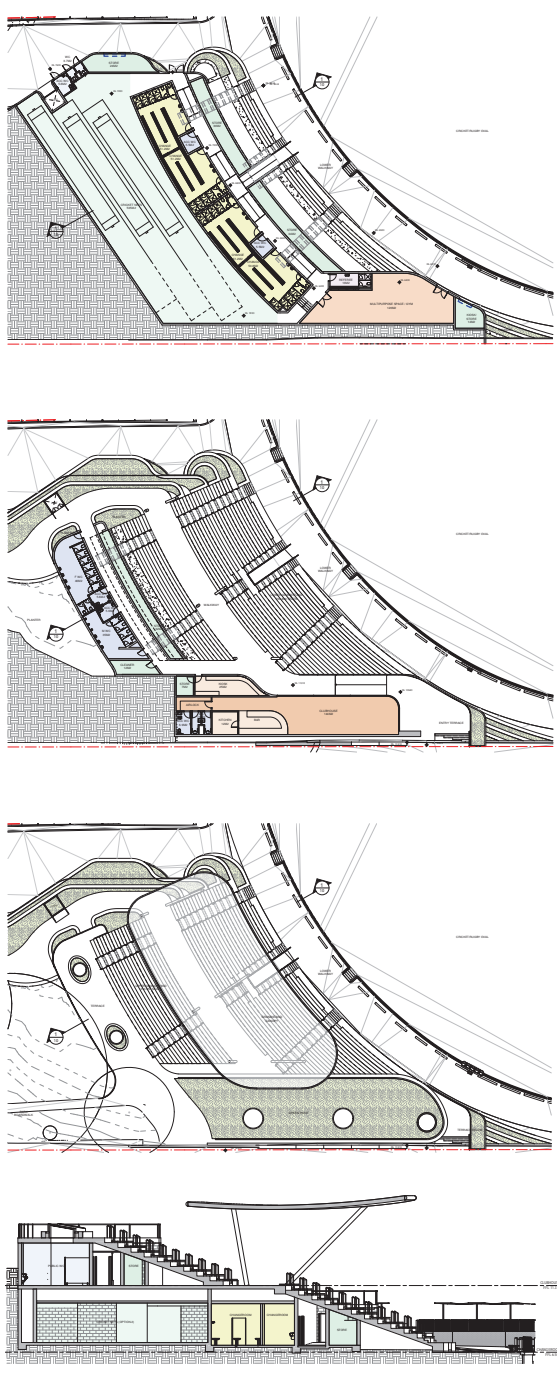
- 1 NEW PAVILION/GRANDSTAND ENTRY
- 2 NEW PARK/UPPER GRANDSTAND ENTRY
- 3 NEW CONNECTION FROM GRANDSTAND TO WESTERN SIDE OF THE PARK.
- 4 BOARDWALK CONNECTION FROM GRANDSTAND TO EXISTING PATH NETWORKS TO MINIMISE IMPACT ON EXISTING TREES.
- 5 TERRACE PLANTING TO FEATURE NATIVE HEATH AND WILDFLOWER SPECIES.
- 6 GREEN ROOF TO NEW PAVILION.
- 7 PLANTING TO BOOKEND BLEACHER SEATING.
- 8 NEW BLEACHER SEATING.
- 9 WALK OF FAME IN ASPHATIC PAVING.
- 10a UPGRADE EXISTING BENCH SEATING.
- 10b UPGRADE EXISTING BENCH SEATING WITH BACKED SEATING.
- 11 WALL TO BE COVERED WITH CLIMBING PLANT (FICUS PUMILA) WITH NARROW GARDEN BED ESTABLISHED AT THE BASE OF WALL.
- 12 GRANDSTAND ROOF
- 13 UPPER GRANDSTAND SEATING
- 14 UPPER VIEWING TERRACE
- 15 LIFT
- 16 DELINEATE HISTORIC BOUNDARY
- 17 MAINTAIN EXISTING ACCESS AND BUS STOP

1:500 @ A3



Club house and grandstand detailed plan

1:400 @ A3



SITING & FORM

Pavilion has been orientated along the Sydney Road frontage to enable improved sight lines to the oval and widen the aperture and view corridor between the sporting and park precincts.

- Pavilion siting provides an acoustic and wind buffer from Sydney Road to the seating areas.

- Grandstand seating merges into the natural contours of the park, transitioning from bleacher seat into landscaped grass spectator zone into landscaped terraces.

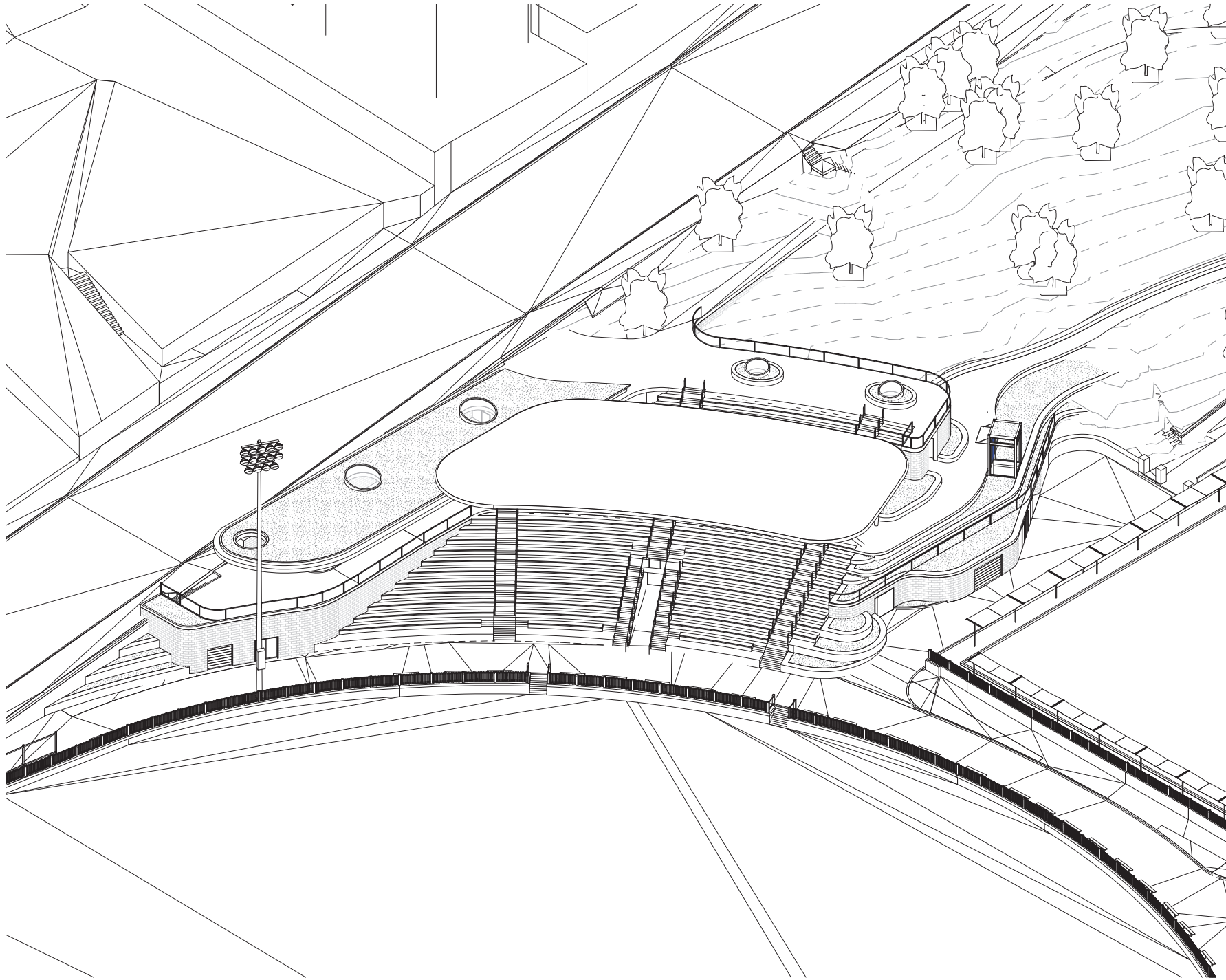
- The flow references the movement of the park setting to sporting precinct as one of nature to constructed, tranquil to activated, introspective to extroverted.

- Activated contours address pedestrian flow and concentrate activity nodes:

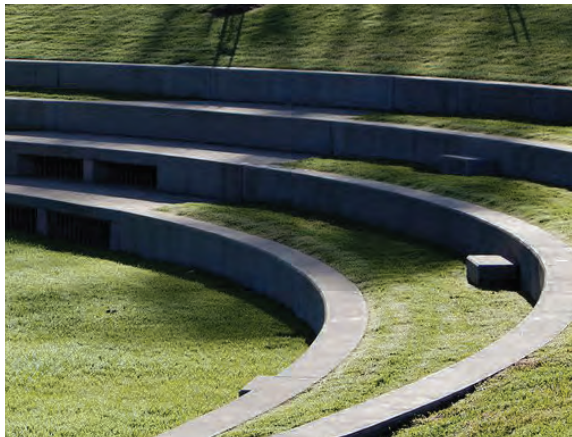
- Oval entry level has emphasis on sporting access and activity, with change rooms located off this level to ease movement of players onto the oval. Public accessible amenities and storage also provided on this level

- Grandstand/Pavilion entry level concentrates spectator functions through the intermediate level, offering the primary pavilion and terrace viewing areas, kiosk and spectator amenities, and a meandering pathway that connects back into the park. This could be a gated entry point for ticketed events

- Park entry point creates a wider on-grade entry point into the park that promotes a pedestrian desire line along Sydney Road and into the mid contour of the park with a new timber boardwalk. (Continue to page 33)



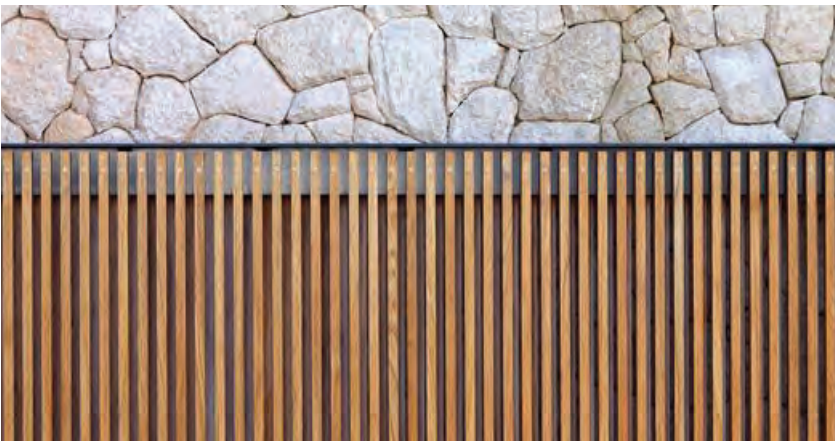
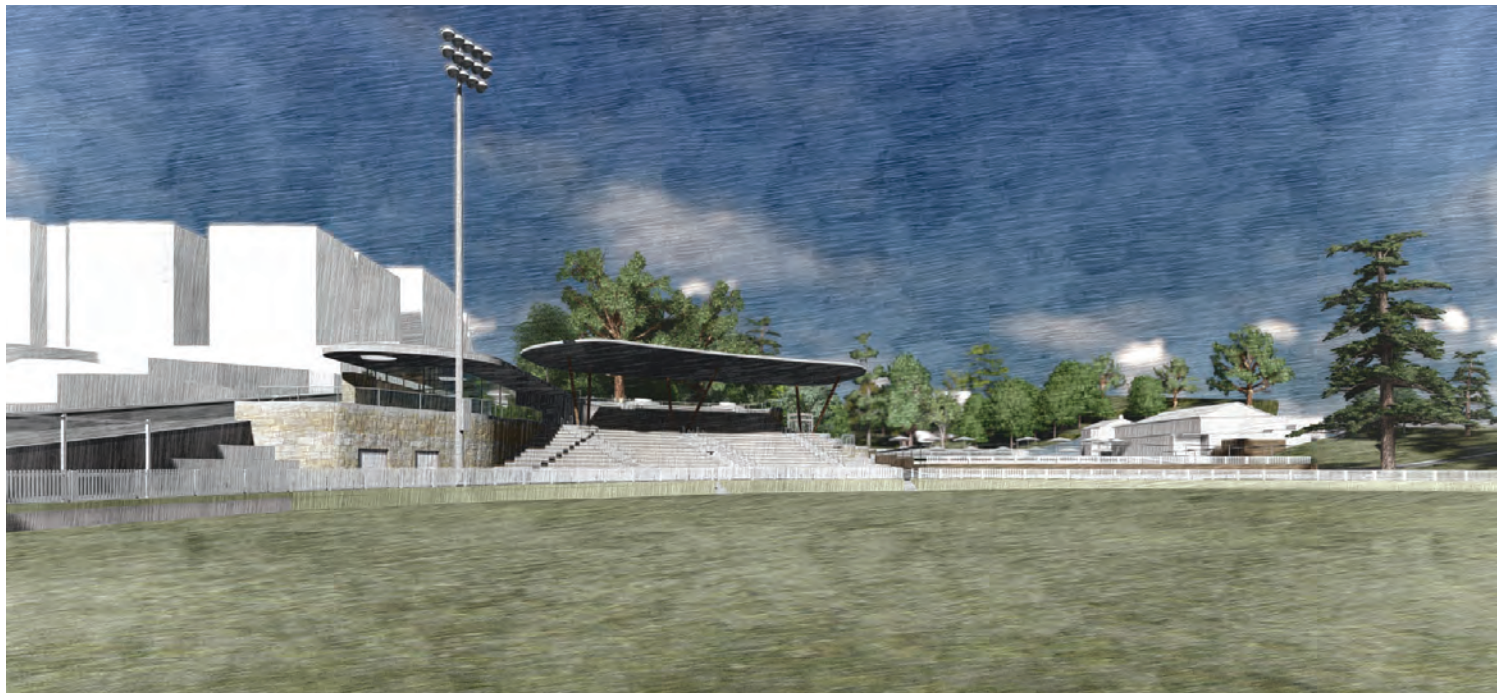
Precedents



This improved pedestrian access point is conceived to promote pedestrian movement to the south of the pavilion and grandstand, reducing pedestrian conflict during ticketed events. The upper level walkway provides glimpses of the sporting events from an upper vantage point, infusing the park and spectator experiences together.

MATERIALITY

- Material palette borrows from natural elements of the park setting. Green roof over the pavilion creates a playful form that reads as an extension of the park into the sporting precinct, taken up again in landscaped viewing terraces that eventually merge into the park
- Organic building forms that work with contour lines soften the built mass and allow for the park context to pervade into the built form
- Timber seating elements to provide warmth to the concrete grandstand structure
- Sandstone cladding to the Pavilion and grandstand facade takes cues from the natural sandstone escarpment and remnants of Dalley's Castle wall and Merrett Gates
- Grandstand canopy conceived as a light floating form that opens the visual connection between sporting and park precincts





DRAFT

3.0 PALETTES

MATERIALS AND FINISHES

MATERIAL PALETTE

The palette for Ivanhoe Park is simple and heritage focused. Existing materials have been replicated in the paving and wall designs. Particular focus has been placed on locating moments of sandstone at key entries and locations. Contemporary materials have also been used such as granite paving reflecting Manly's changing urban character.

A unified design aesthetic, colour and material palette will be applied throughout the Park for both built structures and landscape elements. This aesthetic, colour and material palette along with signage and lighting strategies is to be replicated in other adjoining open spaces including Gilbert Park and Tower Hill Park.



SANDSTONE PAVING



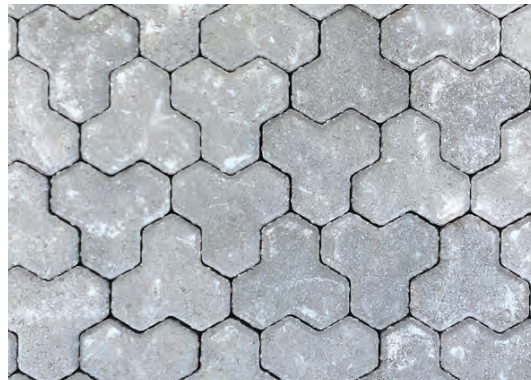
GRANITE UNIT PAVING TO MATCH NBC PALETTE



PLAIN CONCRETE PAVING



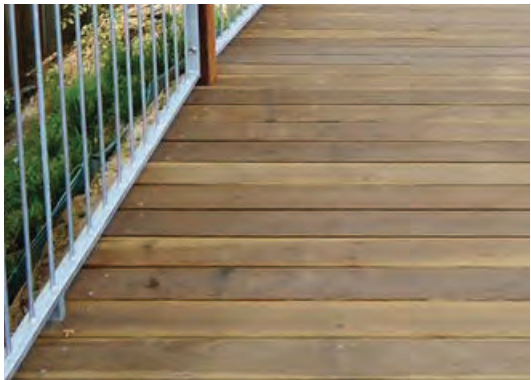
ASPHALTIC CONCRETE PAVING TO CARPARK AND OVAL



TRIHEx PAVING TO POTENTIAL SYDNEY ROAD PEDESTRIAN THRESHOLD



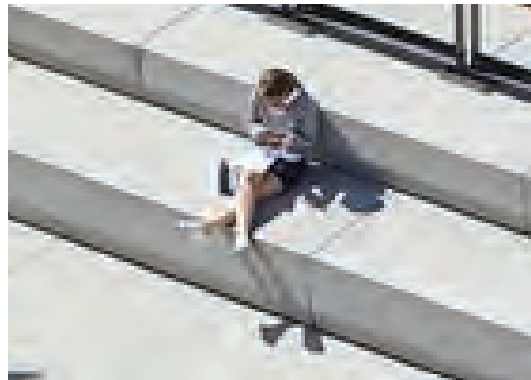
SOFTFALL TO PLAYGROUND



TIMBER BOARDWALK OVER EXISTING TREE ROOT ZONES



SANDSTONE TERRACES IN LAWN TO AMPHITHEATER



CONCRETE BLEACHER SEATING



RAISED SANDSTONE EDGE

PLANTING

PLANTING CHARACTER

The plant palette is to feature a variety of species types to reinforce existing planting in Ivanhoe and Gilbert Parks, this will include both native and exotic types. Native species to the Manly area particularly wildflower species have also been included. The use of wildflower species builds on the sites history where cut wild flower displays featured at key events. These flowers were collected from nearby North Head.

The grouping of plants will occur around flower colour in consistent blocks avoiding individual plantings, or mixed colours.

A range of seasonal flowering will occur in order that there is interest in the landscape throughout the year.



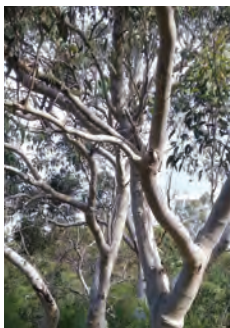
Angophora costata



Howea fosteriana



Livistona australis



Eucalyptus haemastoma



Melaleuca linariifolia



Doryanthes excelsa



Ficinia nodosa



Carex appressa



Lomandra tanika



Lomandra longifolia*



Themeda triandra



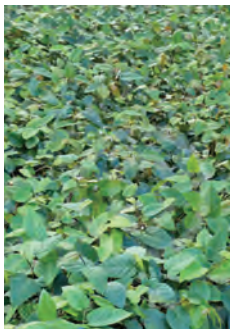
Dianella caerulea



Westringia fruticosa



Asplenium nidus



Cissus antartica



Philodendron Xanadu



Syzygium australe



Banksia spinulosa



Clive minata



Actinotis helianthii



Boronia heterophylla



Carpobrotus glaucescens



Banksia marginata



Telopea speciosissima



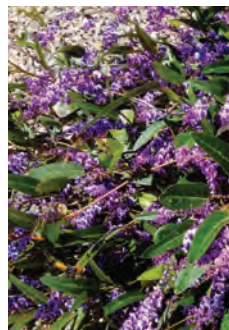
Hibiscus heterophyllus



Hibertia scandens



Viola hederacea



Hardenbergia violacea



Grevillea spinosa

FURNITURE AND FIXTURES

FURNITURE PALETTE

Furniture and fixtures across Ivanhoe Park will be durable and functional while being suitable to the overall historic aesthetic and local character. Existing fences will be repainted with Industrial Lustre or metallic charcoal powdercoat depending on the fence typology to tie into the new colour and materials palettes for the Park. New elements will feature materials such as timber, steel and sandstone while complimenting palettes of Gilbert Park and Northern Beaches Council Public Domain. Park Lighting and signage Strategy to be integrated throughout the park to be further explored.



STREET FURNITURE AUSTRALIA CLASSIC PARK SEAT- JARRAH BATTENS



STREET FURNITURE AUSTRALIA CLASSIC PLAZA TABLE AND BENCHES- JARRAH BATTENS



STREET FURNITURE AUSTRALIA ARQUA STATION



STREET FURNITURE AUSTRALIA ESCOLA BIN ENCLOSURE CHARCOAL POWDERCOAT



BBQ FACILITIES



PICNIC SHELTERS



STREET FURNITURE AUSTRALIA TRADITIONAL BOLLARD



STREET FURNITURE AUSTRALIA SEMI HOOP BIKE RACKS



SANDSTONE PARK SIGNAGE



LEDA REDFERN FENCING WITH SANDSTONE HOB



LEDA REDFERN FENCING



BRONZE PLAQUE INSERTS FOR WALK OF FAME

PLAYGROUND EQUIPMENT

Play elements will be durable and robust offering a play atmosphere of natural tones and textures that offer children a range of play fostering mobility and inclusivity.

Sensory elements and planting will appeal to sound, smell, sight and touch while playground themes reflect a whimsical character engaging the imagination and allowing a child's senses to grow. and discover.

Precedents



ROYAL PARK, MELBOURNE



IAN POTTER PLAYGROUND, SYDNEY



GUMNUT PLAYGROUND, DONNYBROOK

