

- NOTES**
1. INSTALL TWO KERB RAMPS TO ALIGN ACROSS WIGGAN ROAD. REMOVE KERB DIP ON EASTERN SIDE OF WIGGAN RD. CONSTRUCT A 1.5M FOOTPATH FROM BACK OF KERB RAMP AND ALIGN TO 0.6M FROM PROPERTY BOUNDARY AND CONTINUE.
  2. HIGH TREE ROOT AREA IN FRONT OF PROPERTY NO. 24. TRIM AS PER COUNCIL ARBORIST DIRECTION. TRIM BACK BRANCHES IN FRONT OF PROPERTY NO. 24 AND 26.
  3. REMOVE SHRUBS AND BUILDING WASTE IN FRONT OF PROPERTY NO. 28.
  4. TRANSITION 1.5M FOOTPATH FROM 0.6M FROM BOUNDARY TO BACK OF KERB AS SHOWN IN FRONT OF PROPERTY NO. 30 AND 32. MATCH INTO STORM WATER LINTEL.
  5. INSTALL TWO KERB RAMPS TO ALIGN ACROSS BIX ST. RECONSTRUCT A 1.5M KERB RAMP ON SOUTHERN SIDE, ON THE CORNER OF TOR RD AND MATCH INTO EXISTING FOOTPATH. CONSTRUCT A 1.2M KERB RAMP ON NORTHERN SIDE WITH A 1.2M FOOTPATH ALONG BACK OF KERB RAMP MATCHING INTO DWY AS SHOWN. ADJUST LEVEL OF SEWER LID TO FOOTPATH LEVEL IN FRONT OF PROPERTY NO. 38 AS REQUIRED
  6. MOVE POSTBOX TO 0.6M FROM BACK OF 1.5M FOOTPATH IN FRONT OF PROPERTY NO. 40 AND CONTINUE 1.5M FOOTPATH ALONG BACK OF KERB.
  7. TRIM BACK BRANCHES AND REMOVE PROPERTY DRIVEWAY BOUNDARY IN FRONT OF PROPERTY NO. 52. REMOVE TREE AS SHOWN.
  8. MATCH 1.5M FOOTPATH INTO STORM WATER DRIVEWAY IN FRONT OF PROPERTY NO. 58.
  9. TRANSITION 1.5M FOOTPATH FROM BACK OF KERB TO 0.6M FROM BOUNDARY IN FRONT OF PROPERTY NO. 62 AND 64. CONTINUE FOOTPATH 0.6M FROM BOUNDARY.
  10. CONSTRUCT 3.2M OF RESIDENTIAL GRADE CONCRETE DWY 0.6M FROM BOUNDARY IN FRONT OF PROPERTY NO.72 AND 76.
  11. REMOVE TREE STUMP AND ROOTS IN FRONT OF PROPERTY NO. 76.
  12. INSTALL 2 KERB RAMPS TO ALIGN ACROSS BIX RD. SOUTH SIDE KERB RAMP TO MAINTAIN ALIGNMENT WITH 0.6M FROM PROPERTY NO. 47 BOUNDARY AS SHOWN.
  13. INSTALL 2 KERB RAMPS TO ALIGN ACROSS LYNWOOD AVE AS SHOWN. CONSTRUCT 1.5M FOOTPATH TO MATCH INTO BACK OF BOTH KERB RAMPS ON CORNER OF BIX RD AND LYNWOOD AVE.
  14. INSTALL CONCRETE FOOTPATH WITH TRIP STOP JOINTS NEAR TREES. CONTRACTOR TO SEEK APPROVAL FROM COUNCIL'S ARBORIST PRIOR TO COMMENCEMENT OF EXCAVATION AROUND TREES.
  15. BATTER AND RETURF A MIN 0.6M ALONG FOOTPATH EDGE
  16. THE POSITION OF TREES, SERVICES PITS, POLES, MARKER POSTS, SIGNS, ETC ARE INDICATIVE ONLY.
  17. IT IS THE RESPONSIBILITY OF THE CONTRACTOR PRIOR TO ANY DEMOLITION, EXCAVATION OR CONSTRUCTION ACTIVITY ON OR ADJACENT TO THE SITE TO OBTAIN UPDATED SERVICES DIAGRAMS THROUGH A DIAL-BEFORE-YOU-DIG SEARCH AND PHYSICAL SEARCH TO ESTABLISH AND CONFIRM THE EXACT LOCATION/S AND DEPTH/S OF ALL UNDERGROUND SERVICES, PRIOR TO COMMENCEMENT.

LEGEND	
	NEW FOOTPATH 1.5M WIDE UNO, 75MM THICK PLAIN CONCRETE 25MPa NO REQ, BROOM FINISH
	NEW FOOTPATH 1.5M WIDE UNO ACROSS DRIVEWAY ALIGNMENT 130MM THICK PLAIN CONCRETE 25MPa SL72 REQ 30MM COVER, COVE FINISH
	NEW FOOTPATH 1.5M WIDE UNO ACROSS UNIT DRIVEWAY ALIGNMENT 150MM THICK PLAIN CONCRETE 25MPa SL82 REQ 30MM COVER, COVE FINISH
	NEW FOOTPATH 1.5M WIDE UNO ACROSS INDUSTRIAL DWY ALIGNMENT 180MM THICK PLAIN CONCRETE 25MPa SL82 REQ 30MM COVER, COVE FINISH
	NEW CONCRETE PRAM RAMP, COLOUR - DARK TERRACOTTA 25MPa WINGS 500MM WIDE COVE FINISH

**SUMMARY OF WORK**

- CONSTRUCTION OF APPROX. 326M OF CONCRETE FOOTPATH 1.5M WIDE (APPROX. 489M<sup>2</sup>) AND APPROX. 4M OF CONCRETE FOOTPATH 1.2M WIDE (APPROX. 4.8M<sup>2</sup>) IN FRONT OF PROPERTY NO.38.
- CONSTRUCTION OF APPROX 9.5M<sup>2</sup> OF RESIDENTIAL DRIVEWAY ACROSS DRIVEWAY ALIGNMENT
- RELOCATE 1 POST BOX
- INSTALL 7 NEW 1.5M KERB RAMPS AND 1 NEW 1.2M KERB RAMP AS SHOWN.
- BATTER AND RETURF SIDES AS REQUIRED (APPROX. 307M<sup>2</sup>)
- REMOVE ONE SHRUB, TREE AND TREE STUMP.
- TRIM OVERHANGING BRANCHES AND ROOTS FROM FOOTPATH.

northern  
beaches  
council

**LAYOUT PLAN 1**  
BIX RD  
DEE WHY  
FOOTPATH CONCEPT PLAN  
ISSUED FOR CONSTRUCTION

DRAWING NO. TCI-BIX RD FOOTPATH-0001-CONCEPT

ISSUE: 2





#### NOTES

1. INSTALL TWO KERB RAMPS TO ALIGN ACROSS WIGGAN ROAD. REMOVE KERB DIP ON EASTERN SIDE OF WIGGAN RD. CONSTRUCT A 1.5M FOOTPATH FROM BACK OF KERB RAMP AND ALIGN TO 0.6M FROM PROPERTY BOUNDARY AND CONTINUE.
2. HIGH TREE ROOT AREA IN FRONT OF PROPERTY NO. 24. TRIM AS PER COUNCIL ARBORIST DIRECTION. TRIM BACK BRANCHES IN FRONT OF PROPERTY NO. 24 AND 26.
3. REMOVE SHRUBS AND BUILDING WASTE IN FRONT OF PROPERTY NO. 28.
4. TRANSITION 1.5M FOOTPATH FROM 0.6 FROM BOUNDARY TO BACK OF KERB AS SHOWN IN FRONT OF PROPERTY NO. 30 AND 32. MATCH INTO STORM WATER LINTEL.
5. INSTALL TWO KERB RAMPS TO ALIGN ACROSS BIX ST. RECONSTRUCT A 1.5M KERB RAMP ON SOUTHERN SIDE, ON THE CORNER OF TOR RD AND MATCH INTO EXISTING FOOTPATH. CONSTRUCT A 1.2M KERB RAMP ON NORTHERN SIDE WITH A 1.2M FOOTPATH ALONG BACK OF KERB RAMP MATCHING INTO DWY AS SHOWN. ADJUST LEVEL OF SEWER LID TO FOOTPATH LEVEL IN FRONT OF PROPERTY NO. 38 AS REQUIRED
6. MOVE POSTBOX TO 0.6M FROM BACK OF 1.5M FOOTPATH IN FRONT OF PROPERTY NO. 40 AND CONTINUE 1.5M FOOTPATH ALONG BACK OF KERB.
7. TRIM BACK BRANCHES AND REMOVE PROPERTY DRIVEWAY BOUNDARY IN FRONT OF PROPERTY NO. 52. REMOVE TREE AS SHOWN.
8. MATCH 1.5M FOOTPATH INTO STORM WATER DRAIN IN FRONT OF PROPERTY NO. 58.
9. TRANSITION 1.5M FOOTPATH FROM BACK OF KERB TO 0.6 FROM BOUNDARY IN FRONT OF PROPERTY NO. 62 AND 64. CONTINUE FOOTPATH 0.6M FROM BOUNDARY.
10. CONSTRUCT 3.2M OF RESIDENTIAL GRADE CONCRETE DWY 0.6M FROM BOUNDARY IN FRONT OF PROPERTY NO.72 AND 76.
11. REMOVE TREE STUMP AND ROOTS IN FRONT OF PROPERTY NO. 76.
12. INSTALL 2 KERB RAMPS TO ALIGN ACROSS BIX RD. SOUTH SIDE KERB RAMP TO MAINTAIN ALIGNMENT WITH 0.6M FROM PROPERTY NO. 47 BOUNDARY AS SHOWN.
13. INSTALL 2 KERB RAMPS TO ALIGN ACROSS LYNWOOD AVE AS SHOWN. CONSTRUCT 1.5M FOOTPATH TO MATCH INTO BACK OF BOTH KERB RAMPS ON CORNER OF BIX RD AND LYNWOOD AVE.
14. INSTALL CONCRETE FOOTPATH WITH TRIP STOP JOINTS NEAR TREES. CONTRACTOR TO SEEK APPROVAL FROM COUNCIL'S ARBORIST PRIOR TO COMMENCEMENT OF EXCAVATION AROUND TREES.
15. BATTER AND RETURF A MIN 0.6M ALONG FOOTPATH EDGE
16. THE POSITION OF TREES, SERVICES PITS, POLES, MARKER POSTS, SIGNS, ETC ARE INDICATIVE ONLY.
17. IT IS THE RESPONSIBILITY OF THE CONTRACTOR PRIOR TO ANY DEMOLITION, EXCAVATION OR CONSTRUCTION ACTIVITY ON OR ADJACENT TO THE SITE TO OBTAIN UPDATED SERVICES DIAGRAMS THROUGH A DIAL-BEFORE-YOU-DIG SEARCH AND PHYSICAL SEARCH TO ESTABLISH AND CONFIRM THE EXACT LOCATION/S AND DEPTH/S OF ALL UNDERGROUND SERVICES, PRIOR TO COMMENCEMENT.

#### LEGEND

- NEW FOOTPATH 1.5M WIDE UNO, 75MM THICK PLAIN CONCRETE 25MPa NO REQ, BROOM FINISH
- NEW FOOTPATH 1.5M WIDE UNO ACROSS DRIVEWAY ALIGNMENT 130MM THICK PLAIN CONCRETE 25MPa SL72 REQ 30MM COVER, COVE FINISH
- NEW FOOTPATH 1.5M WIDE UNO ACROSS UNIT DRIVEWAY ALIGNMENT 150MM THICK PLAIN CONCRETE 25MPa SL82 REQ 30MM COVER, COVE FINISH
- NEW FOOTPATH 1.5M WIDE UNO ACROSS INDUSTRIAL DWY ALIGNMENT 180MM THICK PLAIN CONCRETE 25MPa SL82 REQ 30MM COVER, COVE FINISH
- NEW CONCRETE PRAM RAMP, COLOUR - DARK TERRACOTTA 25MPa WINGS 500MM WIDE COVE FINISH

#### SUMMARY OF WORK

- CONSTRUCTION OF APPROX. 326M OF CONCRETE FOOTPATH 1.5M WIDE (APPROX. 489M<sup>2</sup>) AND APPROX. 4M OF CONCRETE FOOTPATH 1.2M WIDE (APPROX. 4.8M<sup>2</sup>) IN FRONT OF PROPERTY NO.38.
- CONSTRUCTION OF APPROX 9.5M<sup>2</sup> OF RESIDENTIAL DRIVEWAY ACROSS DRIVEWAY ALIGNMENT
- RELOCATE 1 POST BOX
- INSTALL 7 NEW 1.5M KERB RAMPS AND 1 NEW 1.2M KERB RAMP AS SHOWN.
- BATTER AND RETURF SIDES AS REQUIRED (APPROX. 307M<sup>2</sup>)
- REMOVE ONE SHRUB, TREE AND TREE STUMP.
- TRIM OVERHANGING BRANCHES AND ROOTS FROM FOOTPATH.



#### LAYOUT PLAN 2

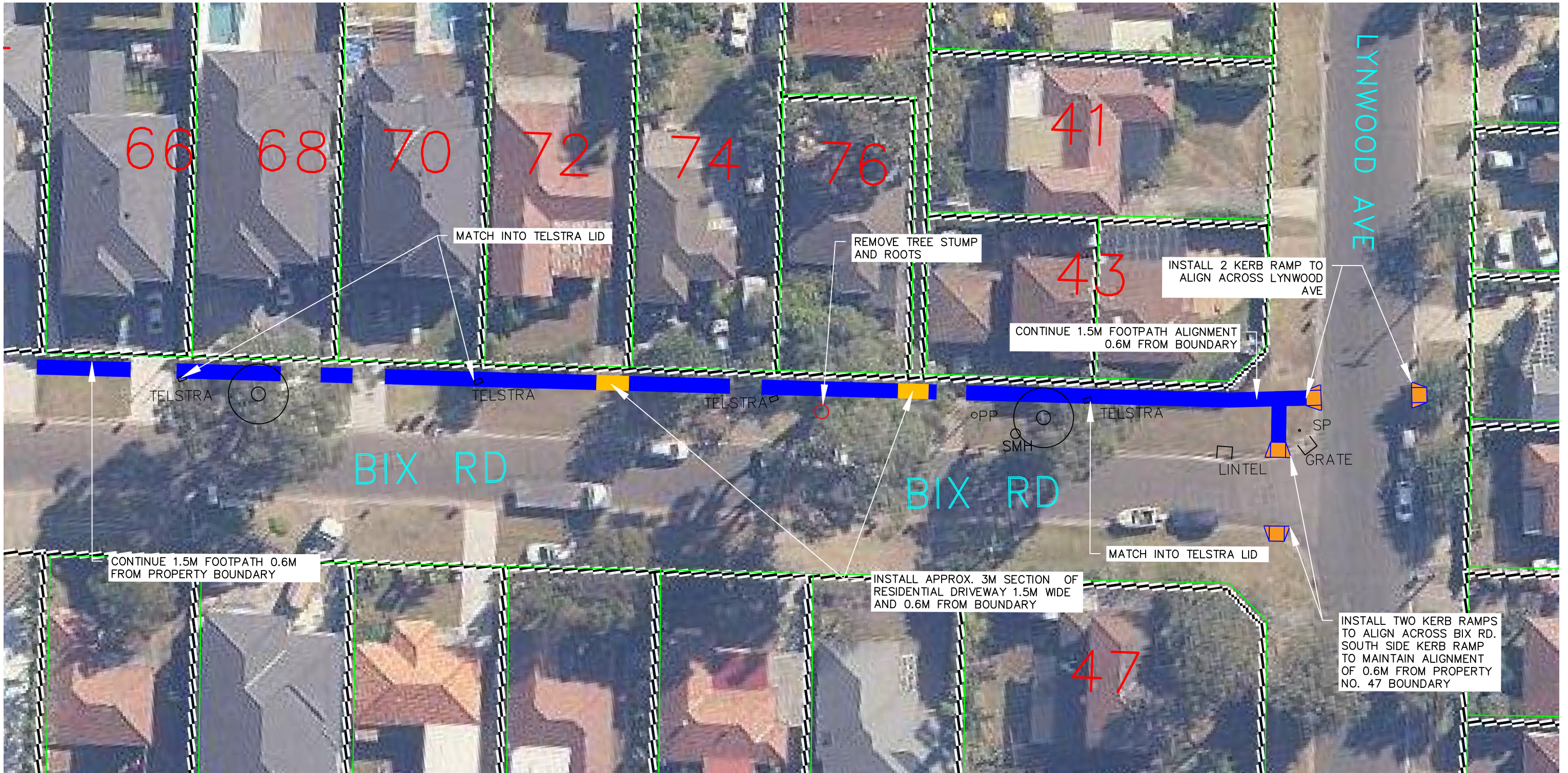
BIX RD  
DEE WHY  
FOOTPATH CONCEPT PLAN  
ISSUED FOR CONSTRUCTION

DRAWING NO. TCI-BIX RD FOOTPATH-0002-CONCEPT

ISSUE: 2







#### NOTES

1. INSTALL TWO KERB RAMP TO ALIGN ACROSS WIGGAN ROAD. REMOVE KERB DIP ON EASTERN SIDE OF WIGGAN RD. CONSTRUCT A 1.5M FOOTPATH FROM BACK OF KERB RAMP AND ALIGN TO 0.6M FROM PROPERTY BOUNDARY AND CONTINUE.
2. HIGH TREE ROOT AREA IN FRONT OF PROPERTY NO. 24, TRIM AS PER COUNCIL ARBORIST DIRECTION. TRIM BACK BRANCHES IN FRONT OF PROPERTY NO. 24 AND 26.
3. REMOVE SHRUBS AND BUILDING WASTE IN FRONT OF PROPERTY NO. 28.
4. TRANSITION 1.5M FOOTPATH FROM 0.6 FROM BOUNDARY TO BACK OF KERB AS SHOWN IN FRONT OF PROPERTY NO. 30 AND 32. MATCH INTO STORM WATER LINTEL.
5. INSTALL TWO KERB RAMP TO ALIGN ACROSS BIX ST. RECONSTRUCT A 1.5M KERB RAMP ON SOUTHERN SIDE, ON THE CORNER OF TOR RD AND MATCH INTO EXISTING FOOTPATH. CONSTRUCT A 1.2M KERB RAMP ON NORTHERN SIDE WITH A 1.2M FOOTPATH ALONG BACK OF KERB RAMP MATCHING INTO DWY AS SHOWN. ADJUST LEVEL OF SEWER LID TO FOOTPATH LEVEL IN FRONT OF PROPERTY NO. 38 AS REQUIRED
6. MOVE POSTBOX TO 0.6M FROM BACK OF 1.5M FOOTPATH IN FRONT OF PROPERTY NO. 40 AND CONTINUE 1.5M FOOTPATH ALONG BACK OF KERB.
7. TRIM BACK BRANCHES AND REMOVE PROPERTY DRIVEWAY BOUNDARY IN FRONT OF PROPERTY NO. 52. REMOVE TREE AS SHOWN.
8. MATCH 1.5M FOOTPATH INTO STORM WATER DRAIN IN FRONT OF PROPERTY NO. 58.
9. TRANSITION 1.5M FOOTPATH FROM BACK OF KERB TO 0.6 FROM BOUNDARY IN FRONT OF PROPERTY NO. 62 AND 64. CONTINUE FOOTPATH 0.6M FROM BOUNDARY.
10. CONSTRUCT 3.2M OF RESIDENTIAL GRADE CONCRETE DWY 0.6M FROM BOUNDARY IN FRONT OF PROPERTY NO.72 AND 76.
11. REMOVE TREE STUMP AND ROOTS IN FRONT OF PROPERTY NO. 76.
12. INSTALL 2 KERB RAMP TO ALIGN ACROSS BIX RD. SOUTH SIDE KERB RAMP TO MAINTAIN ALIGNMENT WITH 0.6M FROM PROPERTY NO. 47 BOUNDARY AS SHOWN.
13. INSTALL 2 KERB RAMP TO ALIGN ACROSS LYNWOOD AVE AS SHOWN. CONSTRUCT 1.5M FOOTPATH TO MATCH INTO BACK OF BOTH KERB RAMP ON CORNER OF BIX RD AND LYNWOOD AVE.
14. INSTALL CONCRETE FOOTPATH WITH TRIP STOP JOINTS NEAR TREES. CONTRACTOR TO SEEK APPROVAL FROM COUNCIL'S ARBORIST PRIOR TO COMMENCEMENT OF EXCAVATION AROUND TREES.
15. BATTER AND RETURF A MIN 0.6M ALONG FOOTPATH EDGE
16. THE POSITION OF TREES, SERVICES PITS, POLES, MARKER POSTS, SIGNS, ETC ARE INDICATIVE ONLY.
17. IT IS THE RESPONSIBILITY OF THE CONTRACTOR PRIOR TO ANY DEMOLITION, EXCAVATION OR CONSTRUCTION ACTIVITY ON OR ADJACENT TO THE SITE TO OBTAIN UPDATED SERVICES DIAGRAMS THROUGH A DIAL-BEFORE-YOU-DIG SEARCH AND PHYSICAL SEARCH TO ESTABLISH AND CONFIRM THE EXACT LOCATION/S AND DEPTH/S OF ALL UNDERGROUND SERVICES, PRIOR TO COMMENCEMENT.

#### LEGEND

- NEW FOOTPATH 1.5M WIDE UNO, 75MM THICK PLAIN CONCRETE 25MPa NO REQ, BROOM FINISH
- NEW FOOTPATH 1.5M WIDE UNO ACROSS DRIVEWAY ALIGNMENT 130MM THICK PLAIN CONCRETE 25MPa SL72 REQ 30MM COVER, COVE FINISH
- NEW FOOTPATH 1.5M WIDE UNO ACROSS UNIT DRIVEWAY ALIGNMENT 150MM THICK PLAIN CONCRETE 25MPa SL82 REQ 30MM COVER, COVE FINISH
- NEW FOOTPATH 1.5M WIDE UNO ACROSS INDUSTRIAL DWY ALIGNMENT 180MM THICK PLAIN CONCRETE 25MPa SL82 REQ 30MM COVER, COVE FINISH
- NEW CONCRETE PRAM RAMP, COLOUR - DARK TERRACOTTA 25MPa WINGS 500MM WIDE COVE FINISH

#### SUMMARY OF WORK

- CONSTRUCTION OF APPROX. 326M OF CONCRETE FOOTPATH 1.5M WIDE (APPROX. 489M<sup>2</sup>) AND APPROX. 4M OF CONCRETE FOOTPATH 1.2M WIDE (APPROX. 4.8M<sup>2</sup>) IN FRONT OF PROPERTY NO.38.
- CONSTRUCTION OF APPROX 9.5M<sup>2</sup> OF RESIDENTIAL DRIVEWAY ACROSS DRIVEWAY ALIGNMENT
- RELOCATE 1 POST BOX
- INSTALL 7 NEW 1.5M KERB RAMP AND 1 NEW 1.2M KERB RAMP AS SHOWN.
- BATTER AND RETURF SIDES AS REQUIRED(APPROX.307M<sup>2</sup>)
- REMOVE ONE SHRUB, TREE AND TREE STUMP.
- TRIM OVERHANGING BRANCHES AND ROOTS FROM FOOTPATH.



LAYOUT PLAN 3  
BIX RD  
DEE WHY  
FOOTPATH CONCEPT PLAN  
ISSUED FOR CONSTRUCTION

DRAWING NO. TCI-BIX RD FOOTPATH-0003-CONCEPT

ISSUE: 2

