



Mona Vale Place Plan

Project Working Group Meeting 1



northern
beaches
council

Welcome!

- Consider which of these images demonstrates your greatest hope for Mona Vale 10 years from now.
- You'll tell the group which image you selected when you introduce yourself.



Tonight's Agenda

1. Welcome
2. Member introductions and activity

Background

3. What is the Place Plan?
4. Overview of past community engagement

Place Plan Vision + Principles

5. Site analysis overview
6. Discussion: Place Plan principles + guiding vision
7. Discussion: balancing preservation and change

Future engagement and next steps



Meeting Ground Rules



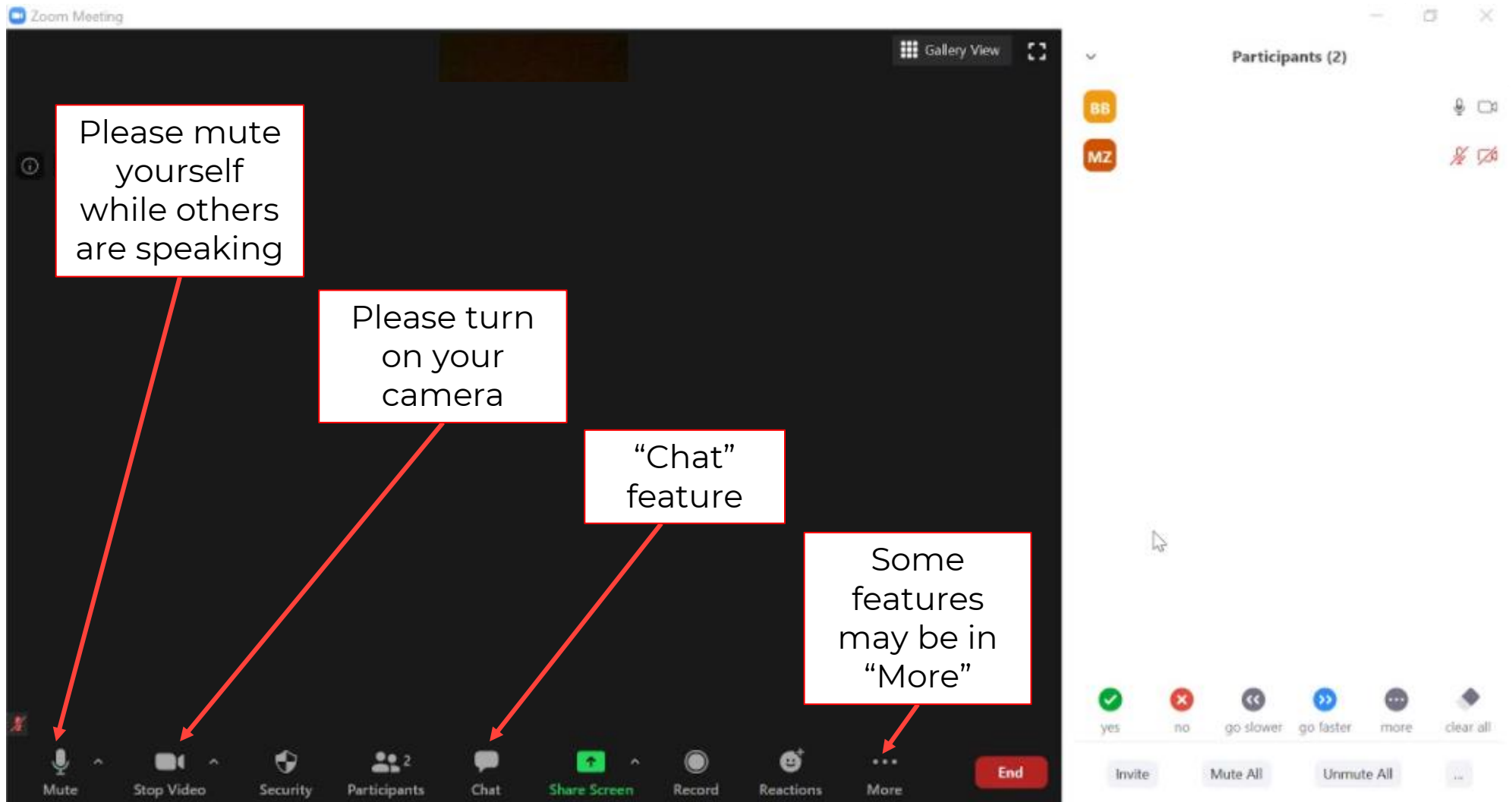
wsp

To help us have a constructive meeting, can we agree to:

- 1 Listen actively
- 2 Share the air
- 3 Critique ideas, not individuals
- 4 Commit to learning, not debating



Zoom functions



The screenshot shows a Zoom meeting interface with a dark background. The top bar includes the Zoom logo, meeting name, and controls like 'Gallery View'. The bottom toolbar contains icons for Mute, Stop Video, Security, Participants, Chat, Share Screen, Record, Reactions, More, and End. The right sidebar shows 'Participants (2)' with avatars and icons for mute, video, and chat. A series of red arrows point from text boxes to specific icons in the toolbar: 'Please mute yourself while others are speaking' points to the Mute icon; 'Please turn on your camera' points to the Stop Video icon; '“Chat” feature' points to the Chat icon; and 'Some features may be in “More”' points to the More icon.

Please mute yourself while others are speaking

Please turn on your camera

“Chat” feature

Some features may be in “More”

PWG Member Introductions

Please share with the group:

- Your name + and interest in the Place Plan
- The image you selected that demonstrates your greatest hope for Mona Vale 10 years from now and why you selected it.



wsp

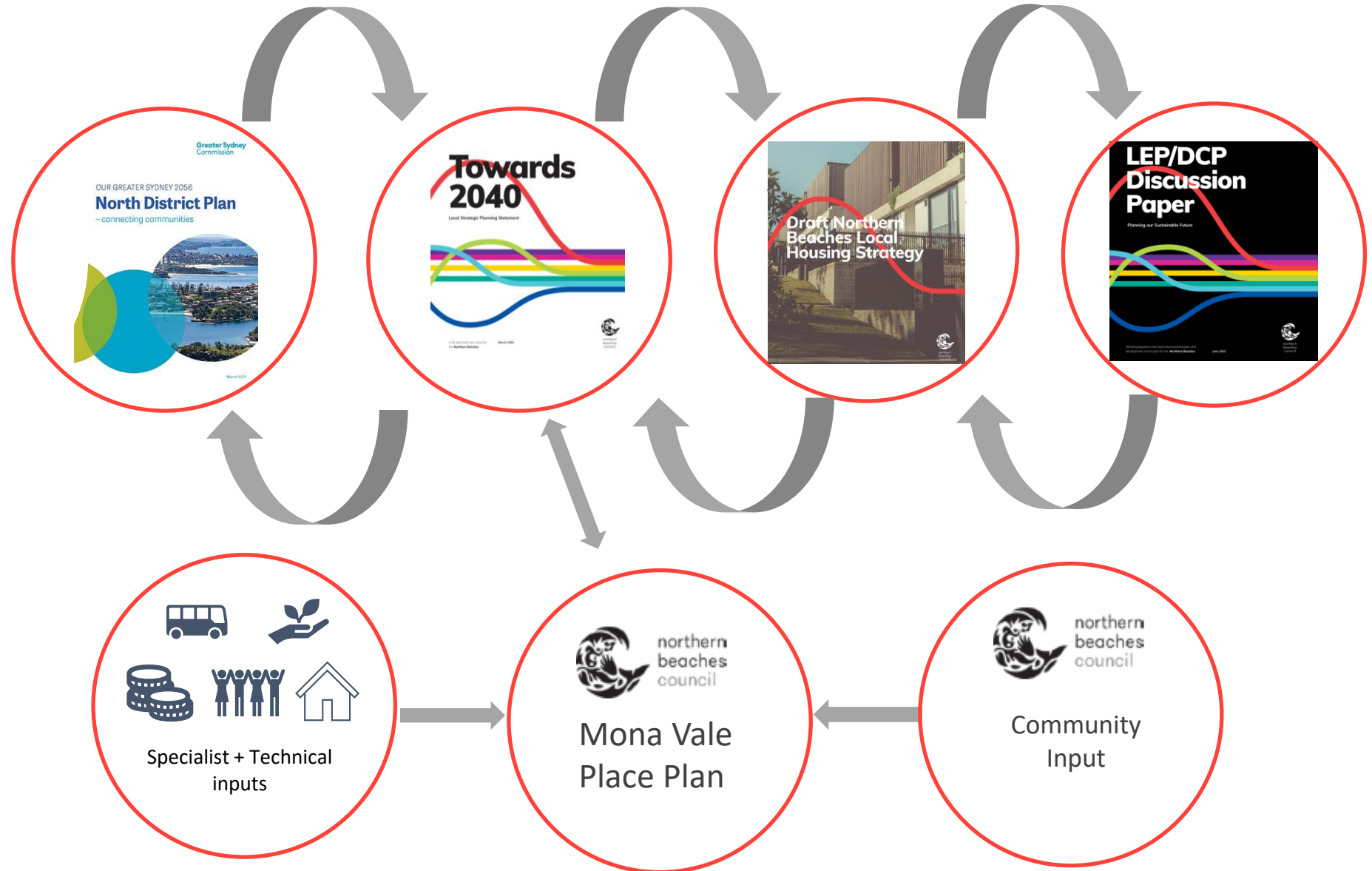


Background



What is the Place Plan trying to accomplish?

The Place Plan will be an actionable plan, particular to the unique character of Mona Vale, that will contribute to achieving the broader visions and strategies for the area.



northern
beaches
council

wsp

Past community engagement

The community has provided extensive input on various plans over the years, which will inform the Place Plan.



wsp



Northern
Beaches
**Community
Engagement
Analysis**

ANNET PENDLETON JUNE 2019



Draft Mona Vale Place
Public Exhibition and
Consultation Out
port



Vision + Principles



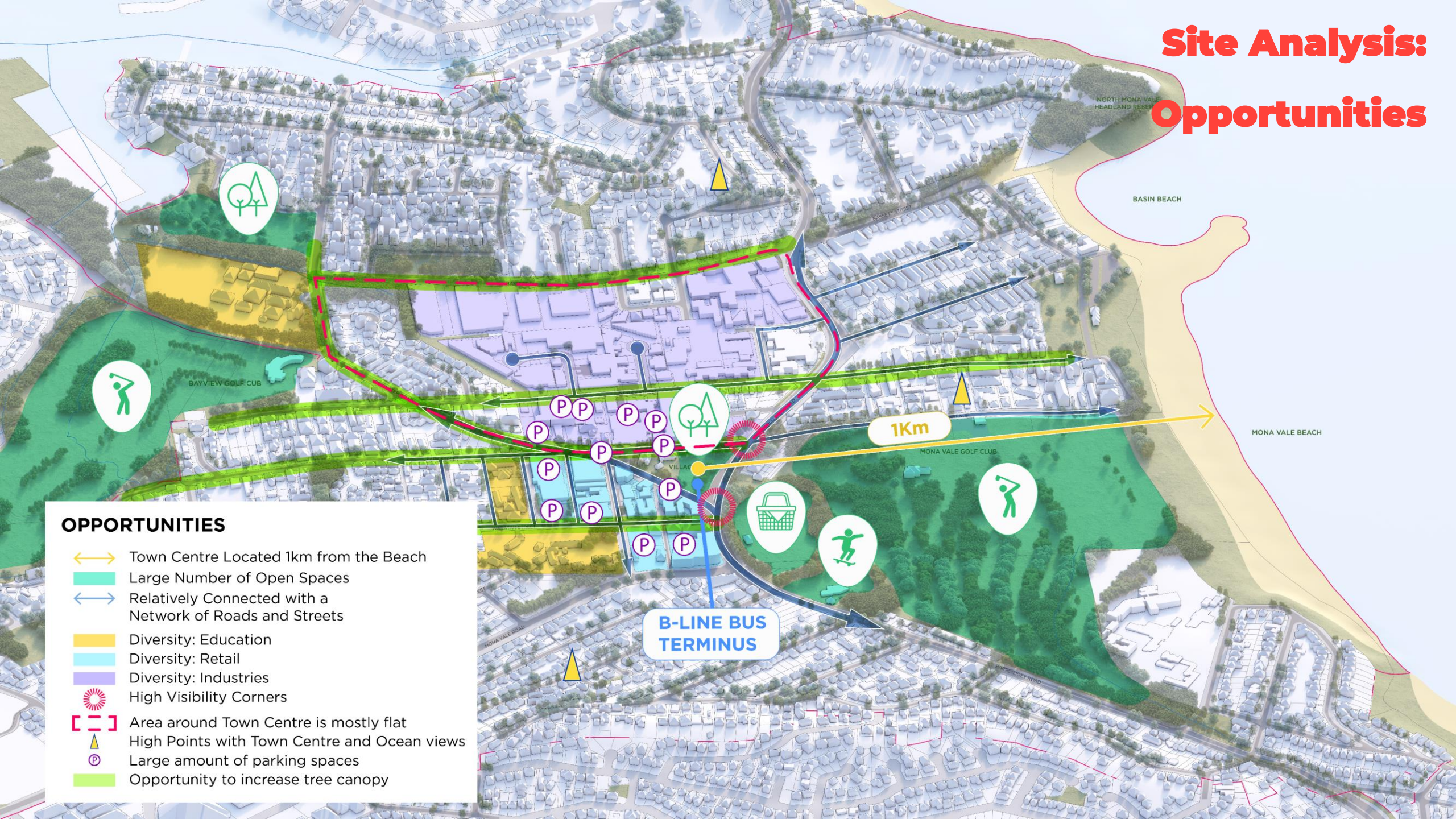
Site Analysis: Context



Site Analysis: Opportunities

OPPORTUNITIES


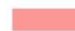



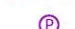
- ↔ Town Centre Located 1km from the Beach
- Large Number of Open Spaces
- ↔ Relatively Connected with a Network of Roads and Streets
- Diversity: Education
- Diversity: Retail
- Diversity: Industries
- High Visibility Corners
- [- -] Area around Town Centre is mostly flat
- ▲ High Points with Town Centre and Ocean views
- P Large amount of parking spaces
- Opportunity to increase tree canopy



Site Analysis: Constraints



CONSTRAINTS

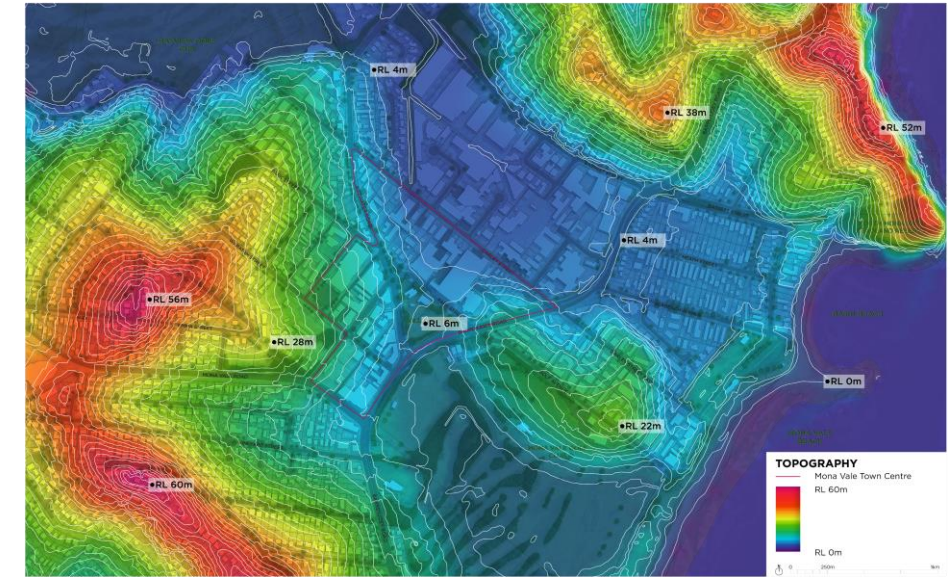
-  Busy Streets, Traffic Noise
-  Strata Lots
-  Under-utilised Village Park
-  Busy Intersections, Difficult to Cross
-  High built form density in industrial area
-  Parking spaces lack vegetation coverage

Site Analysis



northern
beaches
council

wsp



Site Analysis + Principles

Potential principles that have surfaced through analysis:



Connected



Economically thriving



Environmentally contextual ('in nature')



Seeking to meet needs of future generations...





northern
beaches
council

wsp

Discussion: Vision + Principles

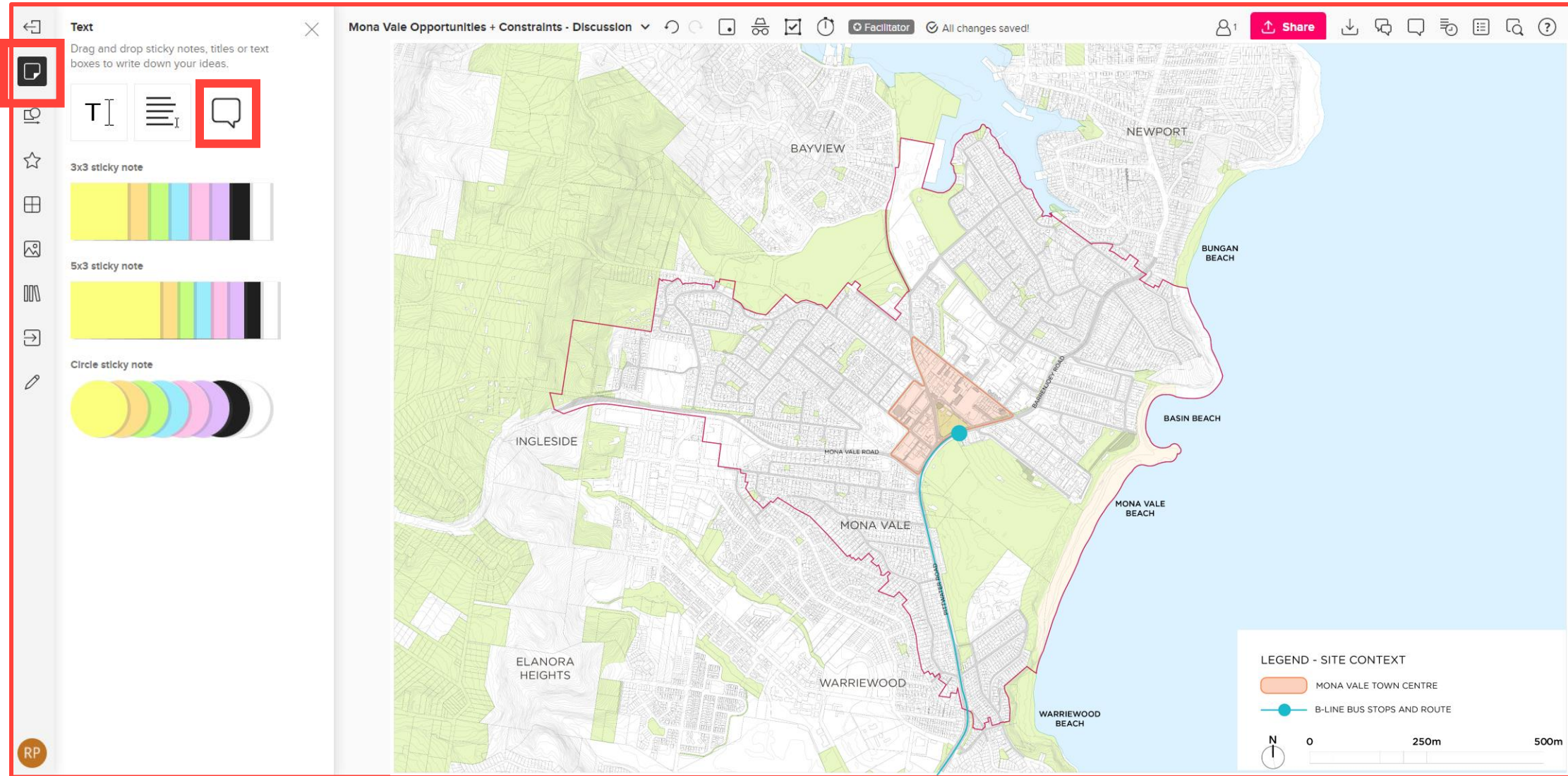
Click the link in the chat to join us at the Mural map and add your comments.

Select the 'sticky note'  then the 'speech bubble'  in the top left corner of the screen.



northern
beaches
council

wsp



Text
Drag and drop sticky notes, titles or text boxes to write down your ideas.

3x3 sticky note

5x3 sticky note

Circle sticky note

Monna Vale Opportunities + Constraints - Discussion

Facilitator All changes saved!

Share

LEGEND - SITE CONTEXT

- MONNA VALE TOWN CENTRE
- B-LINE BUS STOPS AND ROUTE

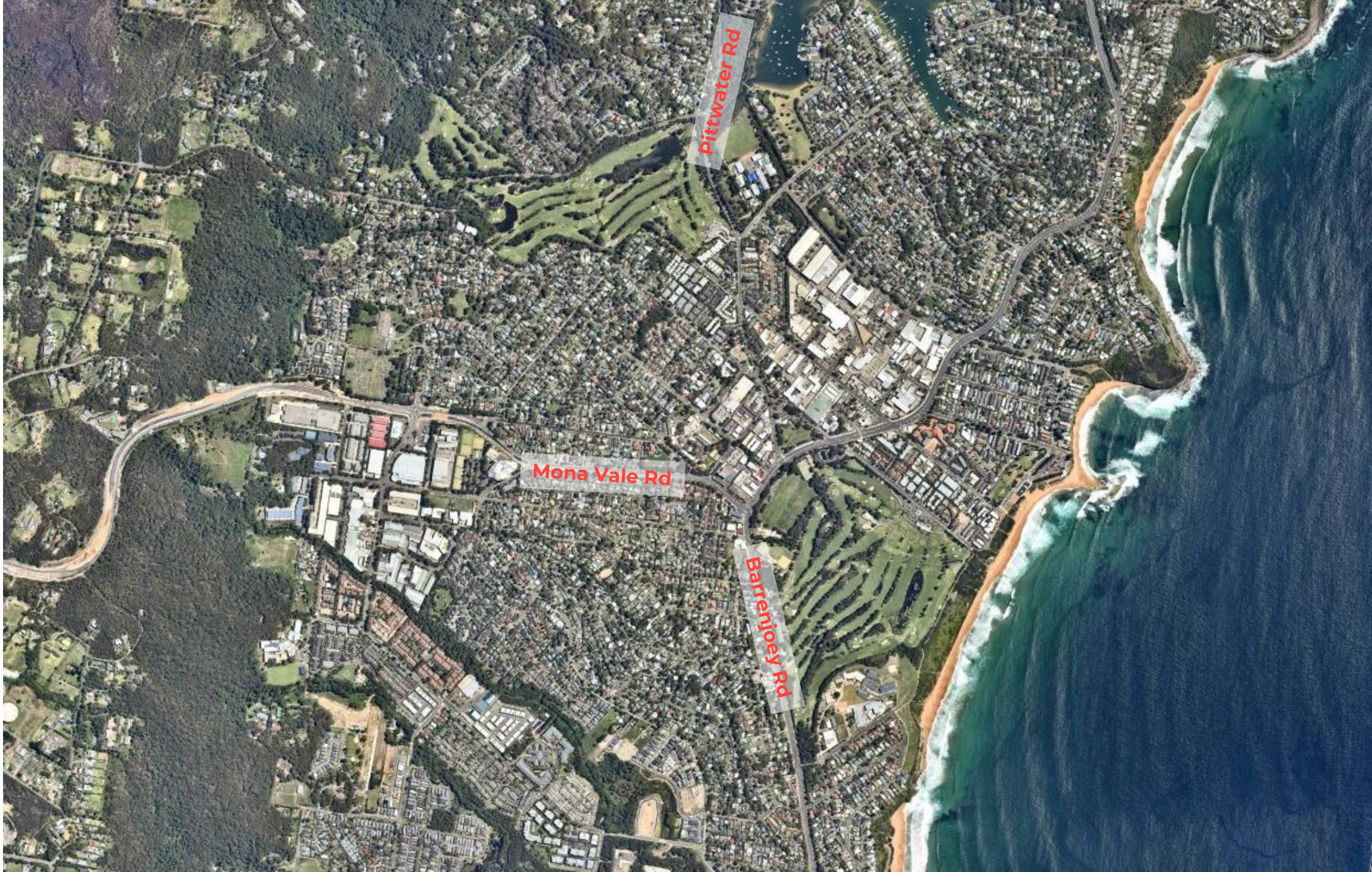
0 250m 500m



northern
beaches
council

wsp

Discussion: Vision + Principles



Discussion: Place Plan Vision + Principles

Is there anything the broader CSP vision misses that the Place Plan should capture?



wsp

“Northern Beaches – a safe, inclusive, and connected community that lives in balance with our extraordinary coastal and bushland environment.”

Change + Preservation



Emerging trends in town centres



Nearby fresh food and cafes and restaurants are the top considerations when buying a new home*



Since **COVID-19**, people use their **local** public space more often and actively -- 49% people walk more, and 56% cycle more^



Building resilience to future extreme climatic events and stressors must be informed by millenia of **local** knowledge of each unique place.



A growing population creates demand for more housing options.

**Love the Place You Live Survey, DPIE 2022*

^Public Spaces during COVID-19, DPIE 2020-2021

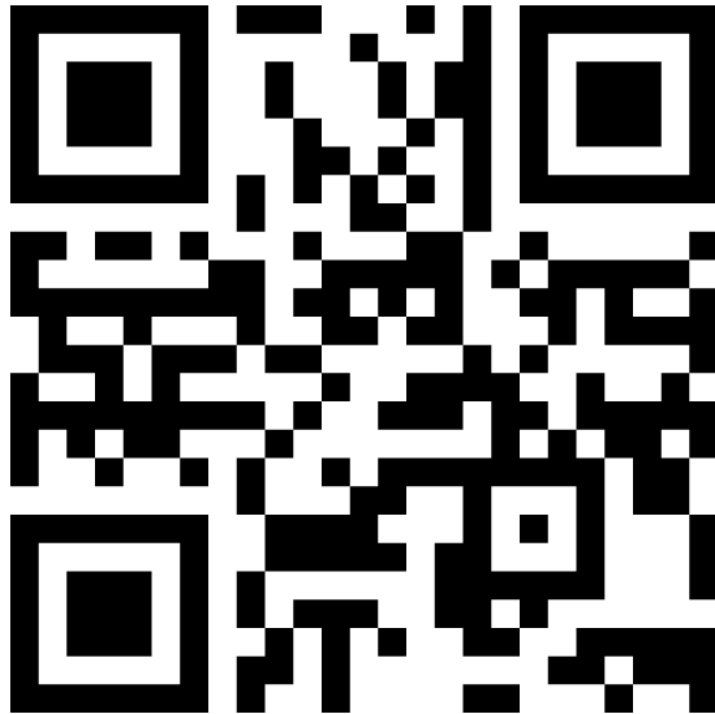


northern
beaches
council

wsp

Balancing Change + Preservation

Scan me with your phone to be taken to a live poll:



OR click the link in the chat to take the poll on your computer.



wsp

Balancing Change + Preservation

Which of the trends do you think are relevant to Mona Vale? You can also add a trend you think is missing in the Zoom chat.



wsp

Click the link in the zoom chat or scan me to be taken to take the poll:

<input type="radio"/>	<input type="radio"/>	<input type="radio"/>	<input type="radio"/>	<input type="radio"/>
1. Nearby retail and hospitality are more important to people.	2. COVID-19 has changed the way we use our local centre.	3. Resilience to climate change is becoming more important.	4. Population growth is putting stress on housing options.	5. Other

Which of the trends do you think are relevant to Mona Vale? You can also add a trend you think is missing in the Zoom chat.

<input type="radio"/>	<input type="radio"/>	<input type="radio"/>	<input type="radio"/>	<input type="radio"/>
1. Nearby retail and hospitality are more important to people.	2. COVID-19 has changed the way we use our local centre.	3. Resilience to climate change is becoming more important.	4. Population growth is putting stress on housing options.	5. Other

Future Engagement

Pop-up stalls in Mona Vale town centre: 12 March

Stakeholder Meetings throughout March

Online Survey: end of March through April

Drop-in Session at Mona Vale Memorial Hall: early April

Public Exhibition

Feedback is welcome via email + phone
(details on next slide)



wsp



Photo: belleproperty.com

Next Meeting and Contact Details

- Project Working Group Meeting 2: **Wednesday 6 April 6pm-8pm**
- COVID-pending, we will meet in person
- We will send details and a calendar invite in advance

Project Contact

- Name Brendan Gavin - Principal Planner
- Phone -1300 434 434
- Email council@northernbeaches.nsw.gov.au
- In writing 'My Place: Mona Vale' Northern Beaches Council, PO Box 82, Manly NSW 1655