

Little Keo Play Features

J2755-M



Porthole Peeking...



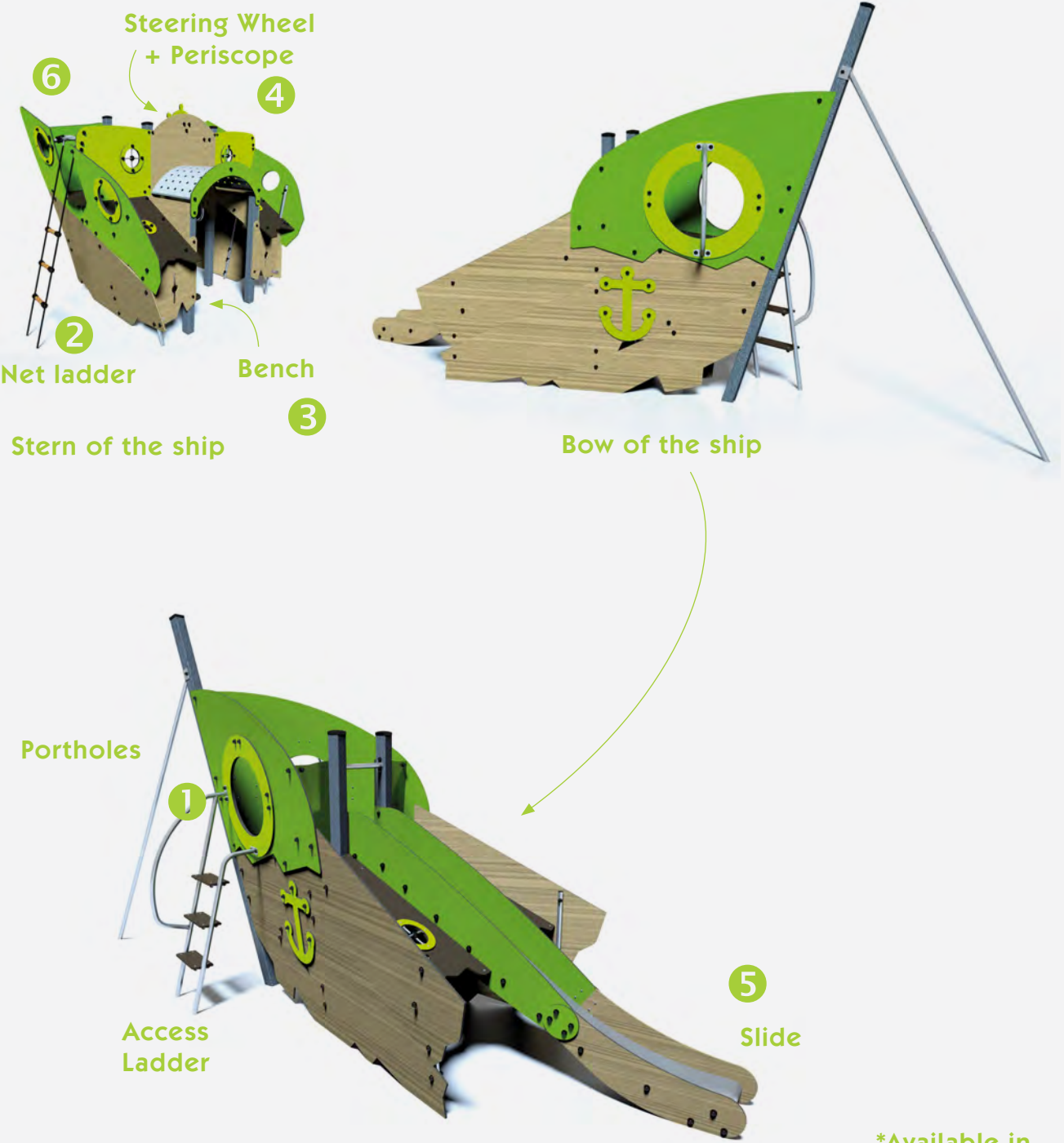
Climb Aboard ...



Relax below deck..

Children set sail for a world of adventure, crossing the stormy seas, discovering a desert island, or simply dropping the anchor to go fishing with friends, any number of stories can be created around the theme of water. Each of the structures is equipped with numerous play elements, designed to test motor and fine motor skills.

Manipulative and role play elements are accessible at ground level . Nets and ladders provide a challenge to get to the upper deck. Then there's the question of who takes the helm, who scans the horizon or who jumps on the slide to set off on a new adventure.



*Available in Custom Colours



Periscope Lookout ...



Slide Down...



Captain the Boat ...

Metal Double Bay Swing with Pod



J496

Swings have given generations of children the sensation of flying through the air and the fun of reaching for the sky! Swings combine motor coordination with sensory stimulation, while repetition of movement also has a calming effect. The pod seat allows for a seated or lying position and is at a height suitable for easy transfer from a wheelchair. The toddler and junior seats allow children to select a supportive seat appropriate to their age.



Range:	Traditional
Ages:	2+ yrs
Capacity:	7
Size:	W 6.36m D 1.22m H 2.63m
Free Height of Fall:	1.55m



[Click Here for more info...](#)

Shang Street, QLD



1 The 125mm diameter posts are made of lacquered galvanised steel. The two-tone grey graining finish has a slightly undulating surface for increased scratch resistance.



2 The pod is made from a single piece of rotary moulded polyethylene. It is fixed to a stainless steel frame that is fitted with buffers.



3 The horizontal beams of the swings are made of non-painted galvanised steel. The swing bearings are made of stainless steel.



4 The fixings are made of stainless steel and protected by anti-vandalism polyamide caps.

Pendulum Swing



R24-ITY-724

Rotating equipment is suitable for children of all ages. Younger children gradually learn about the fun of speed on roundabouts. As they gain self-confidence children can test their sense of balance and their limits on equipment that combines rotating and swinging.



Range:	Rotating
Ages:	5+ yrs
Capacity:	4
Size:	W 3.60m D 3.60m H 2.5m
Free Height of Fall:	1.0m



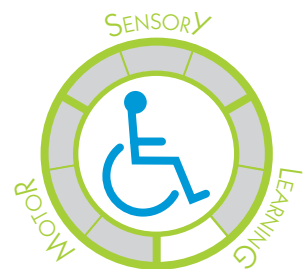
[Click Here for more info...](#)

Accessible Carousel



J2409

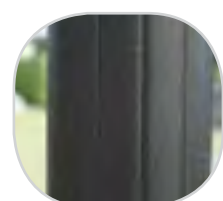
Rotating equipment is suitable for children of all ages. Younger children gradually learn about the fun of speed on roundabouts. As they gain self-confidence children can test their sense of balance and their limits on equipment that combines rotating and swinging. Rotating equipment with low platforms enables access for children with motor impairments.



Range:	Rotating
Ages:	2+ yrs
Capacity:	6
Size:	W 2.04m D 2.04m H1.2m
Free Height of Fall:	1m



[Click Here for more info...](#)



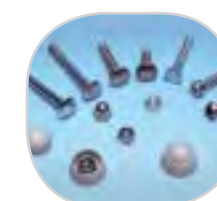
1 The 157mm diameter post is made of lacquered galvanised steel. The two-tone grey graining finish has a slightly undulating surface for increased scratch resistance.



2 The platform is made from aluminium.



4 The tubes are made of stainless steel, diameter 40mm, guaranteeing lasting durability and reliability of the equipment.



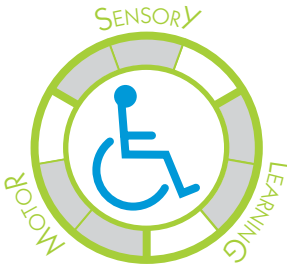
4 The stainless steel fixings are protected by polyamide anti-vandalism caps.

Double Width Embankment Slide



J1110

Slides are an integral element of children's worlds. Slides are available in different heights and lengths, providing a variety of speed options for different age groups. Embankment slides with a starting platform at an upper ground level provide easy access for children of all abilities to enjoy the experience.



Range:	Traditional
Ages:	2+ yrs
Capacity:	3
Size:	W 3.14m D 1.01m H 1.37m
Free Height of Fall:	1.0m

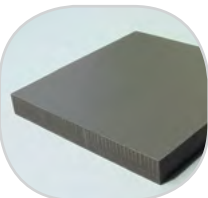


[Click Here for more info...](#)

Wellard Estate, WA



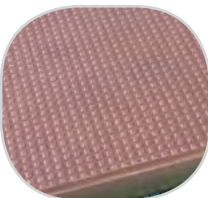
1 The sliding surface is made of 304 stainless steel 2mm thick, which is shaped, bent and rolled in one piece.



2 The side elements consist of coloured panels made from a compact material 13mm thick (HPL). Robust material, it stands up to weathering very well and makes the equipment vandal resistant.



3 Galvanised, painted steel posts 95x95mm, guarantee long term durability. The two-tone grey graining finish has a slightly undulating surface for increased scratch resistance.



4 The platform is made from a 12.5mm thick, textured, non-slip compact material (HPL).

The Playhouse



J287SP

Playhouses provide wonderful places for young children to play and chat and are a welcome addition to any playground. Their detailed design means that they act as a stimulus for role play games as well as being an ideal place for children to take a break before launching into other activities.



Range:	Traditional
Ages:	1+ yrs
Capacity:	8
Size:	W 1.3m D 1.2m H 1.4m
Free Height of Fall:	0.35m

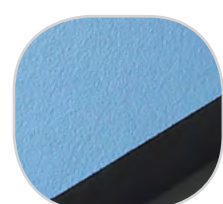


* Green/ Blue coloured version shown

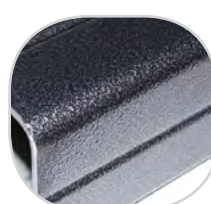


[Click Here for more info...](#)

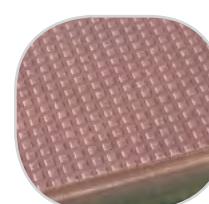
*Standard Colours Shown



1 The coloured panels are made from a 13mm thick compact material (HPL). Robust in construction, it offers excellent resistance to weathering and vandalism.



2 Galvanised, painted steel posts 95 x 95mm guarantee long term durability.



3 The roof and the seats are made from a 12.5mm thick, textured, non-slip compact material (HPL).



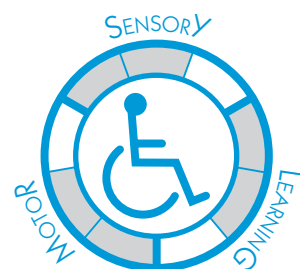
4 The stainless steel fixings are protected by polyamide anti-vandalism caps.

Chime Solo

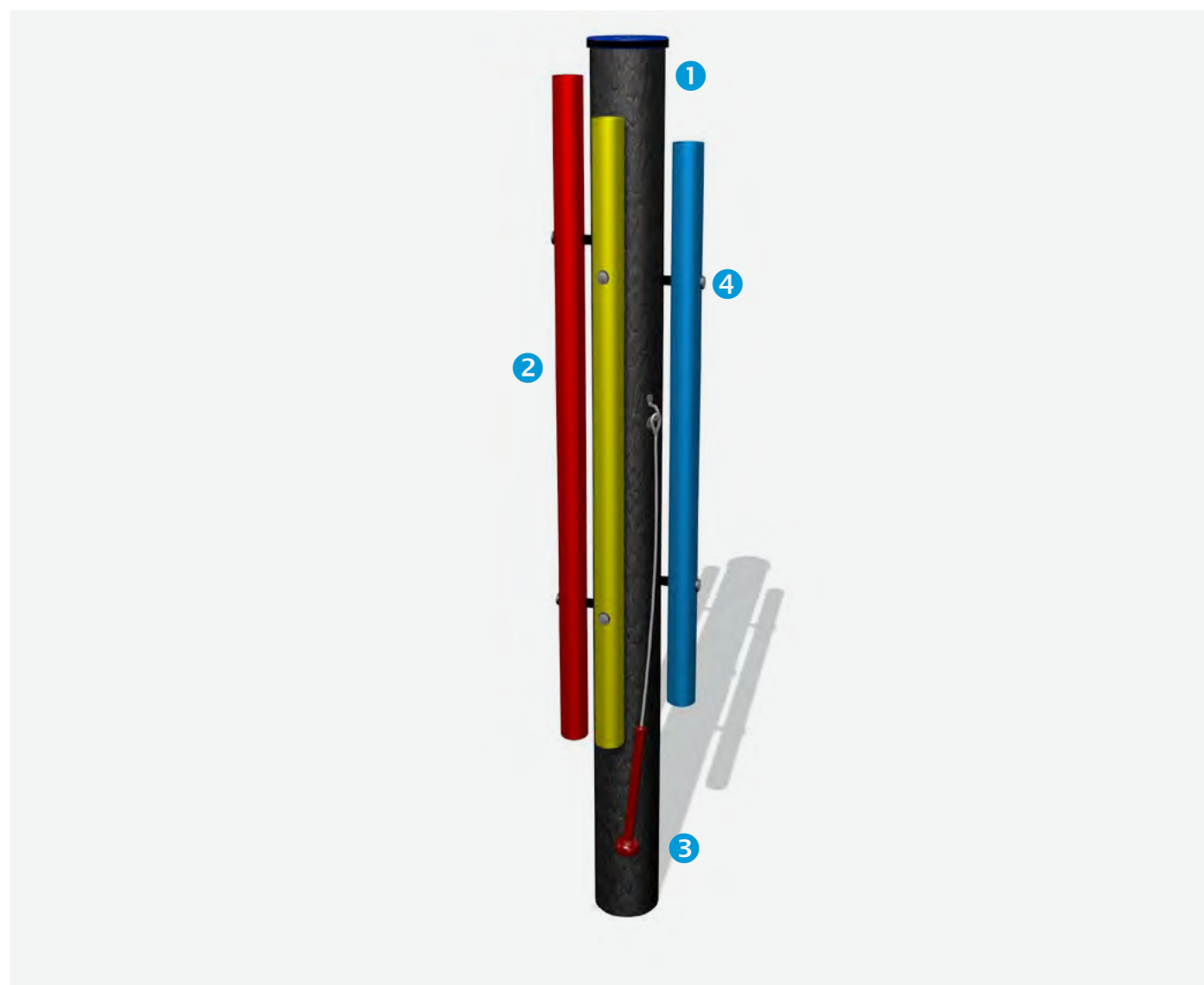


IP412

The Chime Solo is a stylish and sculptural design with great play value that incorporates music and movement. Children can create their own musical games running around this post. Instrument or game, the choice is theirs! The Chime Solo can be a great way to release some tension or expressing a feeling by being able to beat on the chimes loudly.



Range:	Inclusive
Ages:	3+ yrs
Capacity:	2
Size:	W 0.3m D 0.3m H 1.40m
Free Height of Fall:	0m

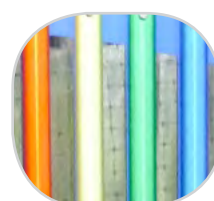


[Click Here for more info...](#)

Bert Payne Playground, NSW



1 The posts are 120 mm in diameter made from 100% recycled material, with a heavy textured finish.



2 Anodised aluminium chimes with a smooth finish are pentatonic notes C4, E4, G4 and C5.



3 The beaters are fully moulded from polyurethane which adds strength.



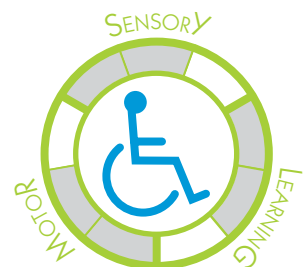
4 All fixings are made from stainless steel.

Tubophone



J3410

Play panels and interactive play experiences provide young children with yet another way of having fun, through a learning approach that enhances their ability to observe and concentrate. Many of the play panels include educational games with movable elements that children can learn from and also enjoy using.



Range:	Play Panels
Ages:	2+ yrs
Capacity:	2
Size:	W 0.20m D 0.50m H 1.15m
Free Height of Fall:	0m



1



2

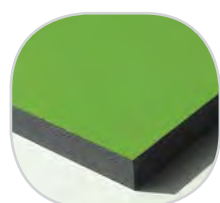
3

4



[Click Here for more info...](#)

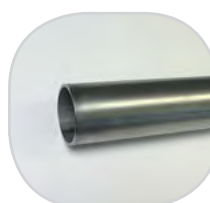
Waverley Park, VIC



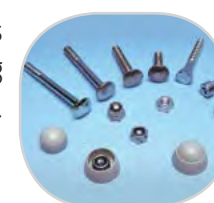
1 The coloured panels are made with a compact material 13mm thick, 70% fibres and 30% thermosetting resin. The panels stand up to weathering very well (sun, rain, damp, etc.).



2 The 95mm square posts are made of painted steel, ensuring robustness and durability



3 The tubes are made of stainless steel, diameter 40mm, guaranteeing lasting durability and reliability of the equipment.



4 The stainless steel fixings are protected by polyamide anti-vandalism caps.

Danny The Dolphin



J822

Spring Rides are essential equipment in playgrounds designed for young children. They enhance a toddlers' sense of balance and help them to coordinate their movements. Older children have great fun as they ride enthusiastically! The spring rides are ergonomically designed for maximum user comfort and safety. The shapes are designed to stimulate the imagination.

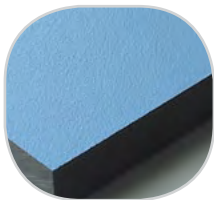


Range:	Moving
Ages:	2+ yrs
Capacity:	2
Size:	W 0.92m D 0.39m H 0.84m
Free Height of Fall:	0.47m

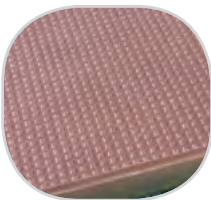


[Click Here for more info...](#)

INTL



1 The coloured panels are made from a 13mm thick compact material (HPL). Robust in construction, it offers excellent resistance to weathering and vandalism.



2 The 12.5mm thick seat is made from a textured, non-slip compact material (HPL).



3 The springs are made from Grade 35SCD6 steel, shot blasted, stress relieved, zinc coated and finished with two coats of epoxy polyester powder.



4 The handles are made of very strong polyamide plastic.

Origin Japanese Steps



J4904

The Origin range draws its inspiration from nature, suiting more natural settings. The range comprises of a series of trails, Multi-play units and traditional play items offering differing and progressive levels of difficulty and challenge for children. The size and design of these Robinia items enable users of all ages to experience a natural playground environment.



Range:	Origin
Ages:	3+ yrs
Capacity:	3
Size:	W 2.30m D 0.60m H 0.3m
Free Height of Fall:	0.60m



1 The steps are made from sap free Robinia. The Robinia is sanded and has had its bark removed. Robinia is naturally rot proof and does not require any additional chemical protection.



[Click Here for more info...](#)

Wellard Estate, WA

Origin Balancing Log

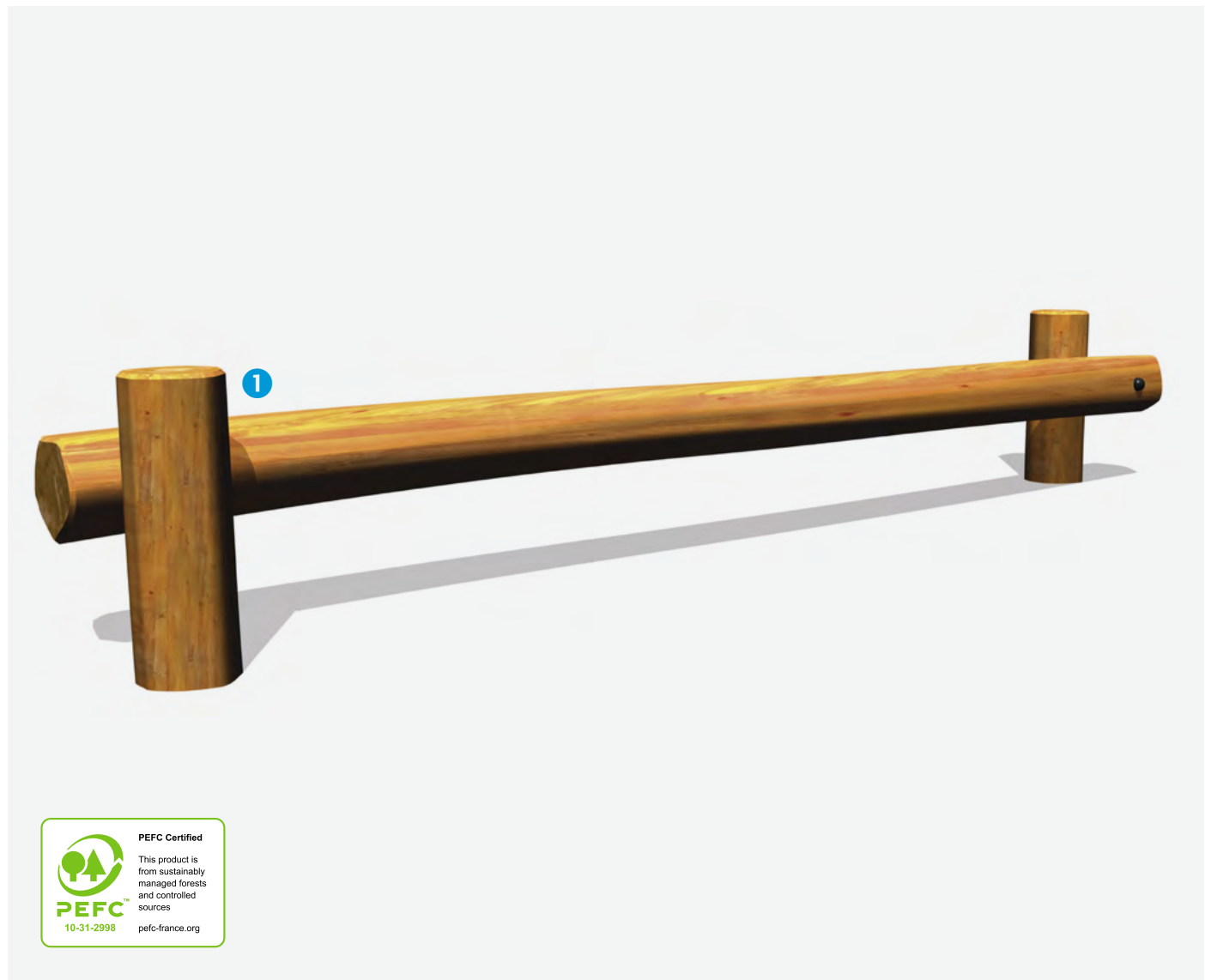


J4903

The Origin range draws its inspiration from nature, suiting more natural settings. The range comprises of a series of trails, Multi-play units and traditional play items offering differing and progressive levels of difficulty and challenge for children. The size and design of these Robinia items enable users of all ages to experience a natural playground environment.



Range:	Origin
Ages:	3+ yrs
Capacity:	3
Size:	W 2.10m D 0.30m H 0.40m
Free Height of Fall:	0.60m



1 The posts (120-140mm diameter), are made from sap free Robinia. The Robinia is sanded and has had its bark removed. Robinia is naturally rot proof and does not require any additional chemical protection.



[Click Here for more info...](#)

Tidlangga Park, SA