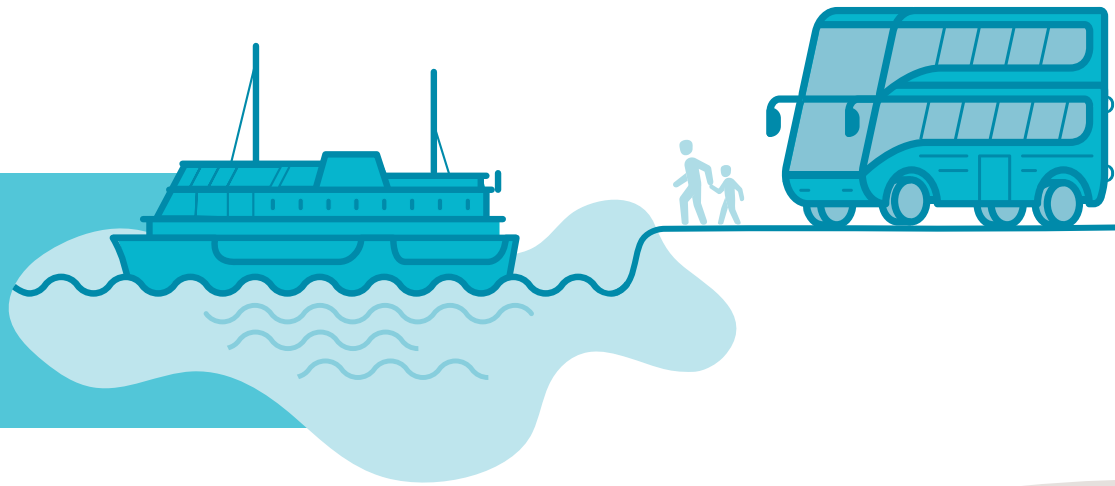


Theme 3. Public Transport



Our Objective

To improve the quality of the public transport system so it provides an attractive alternative to the car and is frequent, reliable, connected and accessible. By shifting the focus from city connections to east-west links we provide additional employment opportunities and open up the rest of Sydney to the Northern Beaches Community.

Background

Much of the Northern Beaches is not serviced effectively by public transport and there is no rail line. Increasing public transport patronage will reduce our road congestion, carbon emissions and deliver other environmental benefits. To move people out of their cars, public transport needs to be reliable, comfortable and affordable.

We will partner with the NSW Government on improving the reliability and reach of the public transport network across the region. Major transport corridors will be prioritised for public transport to improve access, including to Greater Sydney. The initial priority is a bus rapid transit service on the Dee Why, Frenchs Forest and Chatswood road corridors.

The expansion of water-based transport options is supported as is a mass transit system (metro or light rail) in the longer term to move people faster and more efficiently.

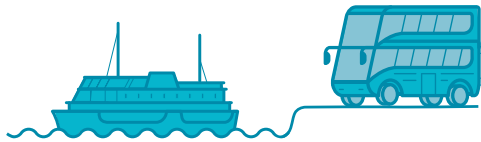
Improvements in technology and the expansion of on-demand services across the area will enable journeys to be more efficient, faster and door to door.

Implementing The Strategy

- Northern Beaches Public Transport Plan (2020)

“ More accessible, frequent and reliable public transport. More on-demand and feeder connections to main bus stations and ferries. Less cars means more public transport and active travel options and a better quality of life for all.”²³

²³ Community Quotes from people supporting public and community transport



Community Attitudes about Public Transport

- Public and community transport options were highly supported as the best way to address current traffic congestion.
- The frequency of bus services was a concern, specifically the B-Line services, after-hours (or late night) services and feeder buses for the B-Line services.
- Extending park and ride options near transport hubs would reduce private vehicle commuting.
- New ferry services to increase connectivity between the Northern Beaches and the Sydney CBD, particularly Clontarf to CBD and other 'harbour' connections require further investigation.
- Better use of road infrastructure via clearways and dedicated lanes for public transport during peak hours were options to consider.
- Considerable support for new public transport options of light rail, metro and trains, despite concerns it will result in higher density development. There was a prevailing response that transport needed to "catch up" with population and housing growth already happening and 'get on the front foot' with its plans.

Our Public Transport Future Directions

1. **Partner with the NSW Government to implement a Bus Rapid Transit service by 2020 between Dee Why, Frenchs Forest and Chatswood; followed by services between Mona Vale and Macquarie Park.**
2. **Plan for a high frequency mass transit service on the Northern Beaches in the longer term.**
3. Support the expansion of the public transport network, including its integration with commuter parking and active travel networks.
4. Advocate for investment and expansion of ferry travel (the 'Blue Highway').
5. Integrate local on-demand services into the wider public transport network.
6. Support the adoption of innovative technology that improves the efficiency of the public transport network and experience for customers in terms of comfort and navigating the network.
7. Use real time public transport travel data to make decisions and deliver better outcomes for the community.

What will this look like in 2038?

- Rapid Transit provides express services to Macquarie Park and Chatswood
- More public transport options are available 24/7
- More places have access to on demand services to connect to reliable public transport
- Mass transit options are delivered by the State Government for the Northern Beaches.

