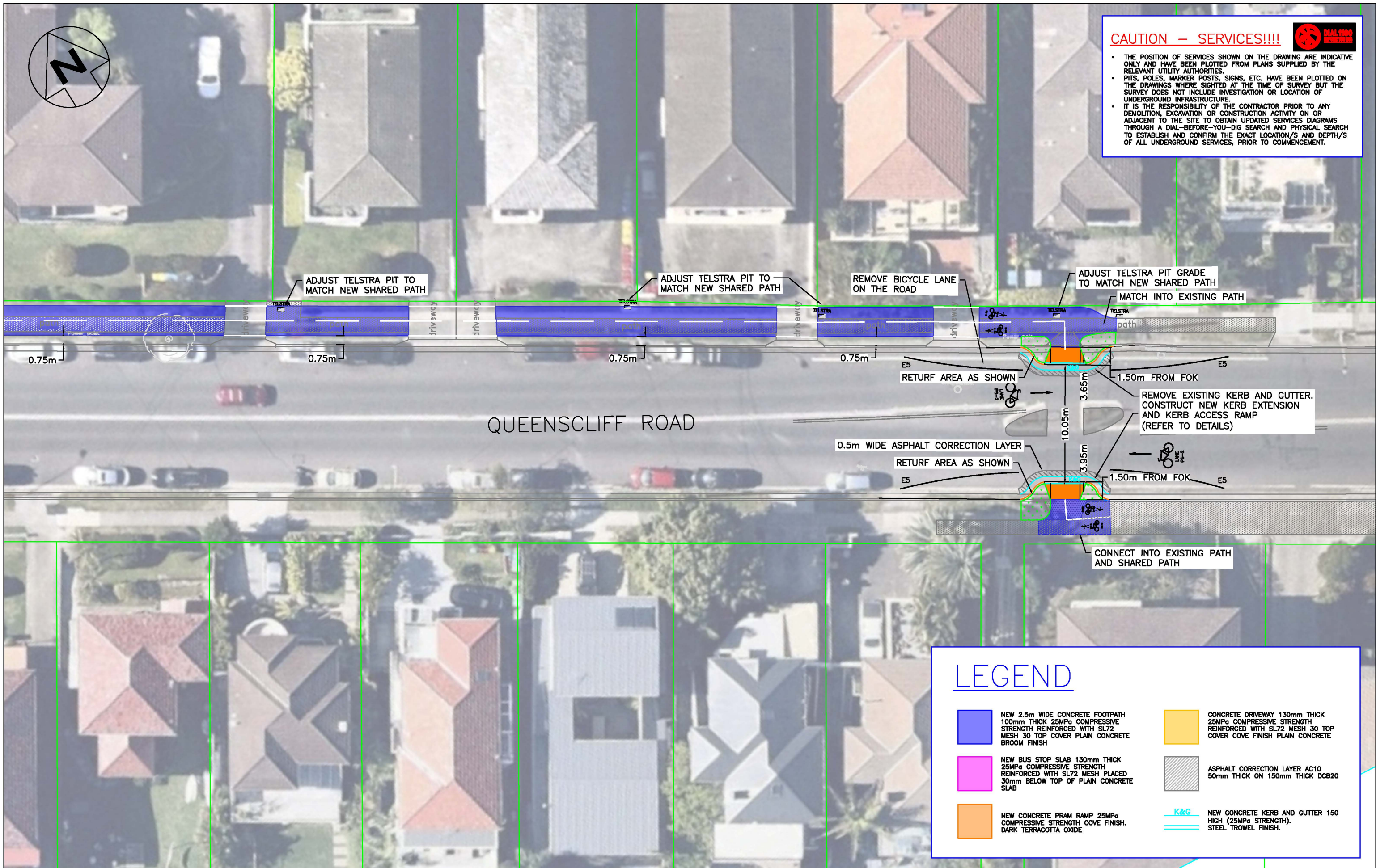




CAUTION – SERVICES!!!!



- THE POSITION OF SERVICES SHOWN ON THE DRAWING ARE INDICATIVE ONLY AND HAVE BEEN PLOTTED FROM PLANS SUPPLIED BY THE RELEVANT UTILITY AUTHORITIES.
- PITS, POLES, MARKER POSTS, SIGNS, ETC. HAVE BEEN PLOTTED ON THE DRAWINGS WHERE SIGHTED AT THE TIME OF SURVEY BUT THE SURVEY DOES NOT INCLUDE INVESTIGATION OR LOCATION OF UNDERGROUND INFRASTRUCTURE.
- IT IS THE RESPONSIBILITY OF THE CONTRACTOR PRIOR TO ANY DEMOLITION, EXCAVATION OR CONSTRUCTION ACTIVITY ON OR ADJACENT TO THE SITE TO OBTAIN UPDATED SERVICES DIAGRAMS THROUGH A DIAL-BEFORE-YOU-DIG SEARCH AND PHYSICAL SEARCH TO ESTABLISH AND CONFIRM THE EXACT LOCATION/S AND DEPTH/S OF ALL UNDERGROUND SERVICES, PRIOR TO COMMENCEMENT.



LEVEL DATUM: AHD		PLOT DATE: 17/12/2020		FOLDER: V:\Urban2\DRAWINGS Current\Jana Rahman\2020-21\Footpath Program 2020-21\Queenscliff Rd, Queenscliff\TCI-QUEENSCLIFF ROAD-SHARED PATH REGIONAL-IFC.dwg	
CO-ORD SYSTEM: MGA**		PRELIMINARY		DESIGN APPROVED	
SURVEYED/DATED: LTS/10/06/20		DRAWN BY: F. RAHMAN		DESIGNED BY: F. RAHMAN	
WORK-AS-EXECUTED		DATED: 30/10/20		DATE: (**/**/20)	
2 17/12/20 REVISED WITH COMMENTS FROM TRAFFIC		FR BY: G. FARDELL		APPROVED BY: T. LAU	
1 01/10/20 INITIATE DRAWINGS		FR DATE: 01/10/20		APPROVED BY: T. LAU	
No DATE AMENDMENTS		INITIATED BY: R. GURTER		PRINCIPAL ENGINEER	
		(TRAFFIC SECTION)		DESIGN MANAGER	

0 0.10 0.20 0.30 0.40 0.50 METRES 1:20 A3

0 0.2 0.4 0.6 0.8 1 METRES 1:40 A3

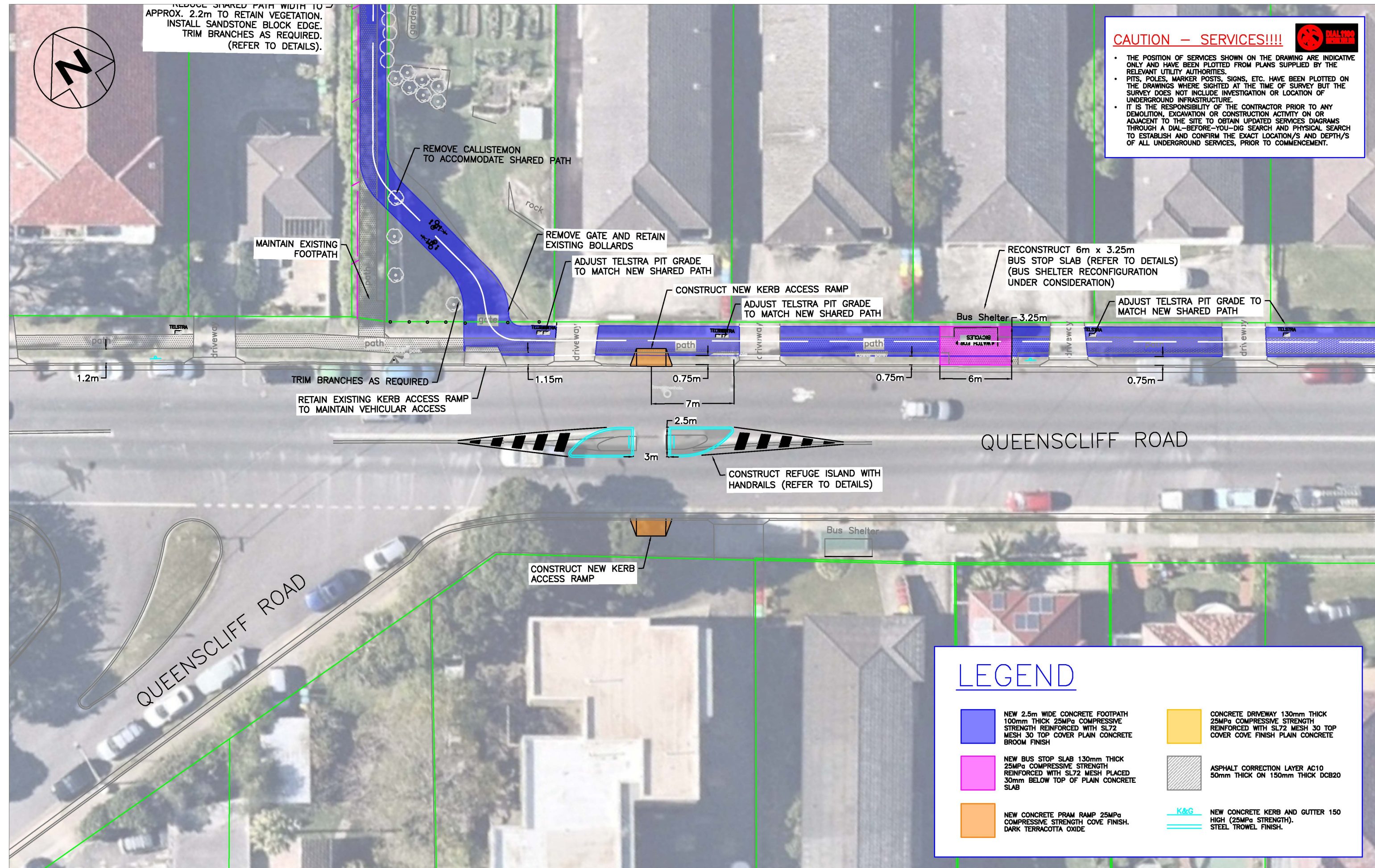
0 0.5 1.0 1.5 2.0 2.5 METRES 1:100 A3

northern beaches council

NEW SHARED PATH
QUEENSCLIFF RD, QUEENSCLIFF
FROM QUEENSCLIFF RD TO LAWRENCE STREET
PLAN 1

DRAWING NO. TCI-QUEENSCLIFF RD- SHARED PATH-CONCEPT1-0003

REVISION: 1



CAUTION – SERVICES!!!!

- THE POSITION OF SERVICES SHOWN ON THE DRAWING ARE INDICATIVE ONLY AND HAVE BEEN PLOTTED FROM PLANS SUPPLIED BY THE RELEVANT UTILITY AUTHORITIES.
- PITS, POLES, MARKER POSTS, SIGNS, ETC. HAVE BEEN PLOTTED ON THE DRAWINGS WHERE SIGHTED AT THE TIME OF SURVEY BUT THE SURVEY DOES NOT INCLUDE INVESTIGATION OR LOCATION OF UNDERGROUND INFRASTRUCTURE.
- IT IS THE RESPONSIBILITY OF THE CONTRACTOR PRIOR TO ANY DEMOLITION, EXCAVATION OR CONSTRUCTION ACTIVITY ON OR ADJACENT TO THE SITE TO OBTAIN UPDATED SERVICES DIAGRAMS THROUGH A DIAL-BEFORE-YOU-DIG SEARCH AND PHYSICAL SEARCH TO ESTABLISH AND CONFIRM THE EXACT LOCATION/S AND DEPTH/S OF ALL UNDERGROUND SERVICES, PRIOR TO COMMENCEMENT.

LEGEND

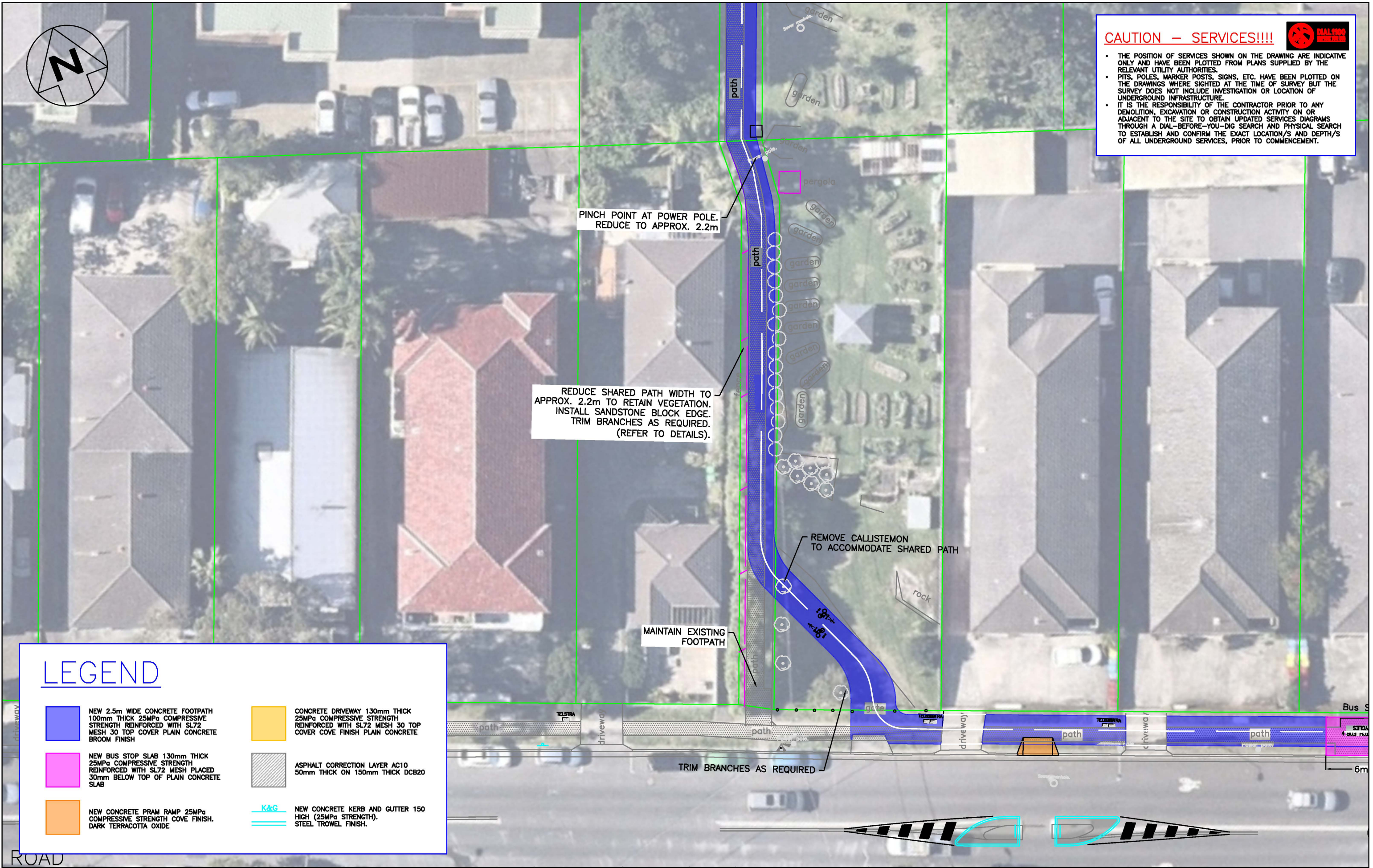
	NEW 2.5m WIDE CONCRETE FOOTPATH 100mm THICK 25MPa COMPRESSIVE STRENGTH REINFORCED WITH SL72 MESH 30 TOP COVER PLAIN CONCRETE BROOM FINISH		CONCRETE DRIVEWAY 130mm THICK 25MPa COMPRESSIVE STRENGTH REINFORCED WITH SL72 MESH 30 TOP COVER COVE FINISH PLAIN CONCRETE
	NEW BUS STOP SLAB 130mm THICK 25MPa COMPRESSIVE STRENGTH REINFORCED WITH SL72 MESH PLACED 30mm BELOW TOP OF PLAIN CONCRETE SLAB		ASPHALT CORRECTION LAYER AC10 50mm THICK ON 150mm THICK DCB20
	NEW CONCRETE PRAM RAMP 25MPa COMPRESSIVE STRENGTH COVE FINISH. DARK TERRACOTTA OXIDE		K&G NEW CONCRETE KERB AND GUTTER 150 HIGH (25MPa STRENGTH). STEEL TROWEL FINISH.

LEVEL DATUM: AHD		PLOT DATE: 17/12/2020		FOLDER: V:\Urban2\DRAWINGS Current\Jana Rahman\2020-21\Footpath Program 2020-21\Queenscliff Rd, Queenscliff\TCI-QUEENSCLIFF ROAD-SHARED PATH REGIONAL-IFC.dwg	
CO-ORD SYSTEM: MGA**		PRELIMINARY		DESIGN APPROVED	
SURVEYED/DATED: LTS/10/06/20		DRAWN BY: F. RAHMAN		DESIGNED BY: F. RAHMAN	
WORK-AS-EXECUTED		DATED: 30/10/20		DATE: (**/**/20)	
2 17/12/20 REVISED WITH COMMENTS FROM TRAFFIC		FR BY: G. FARDELL		APPROVED BY: T. LAU	
1 01/10/20 INITIATE DRAWINGS		FR DATE: 01/10/20		APPROVED BY: T. LAU	
No DATE AMENDMENTS INITIALS		INITIATED BY: P. GRAY		DESIGN MANAGER	
		(TRAFFIC SECTION)		PRINCIPAL ENGINEER	

NEW SHARED PATH
QUEENSCLIFF RD, QUEENSCLIFF
FROM QUEENSCLIFF RD TO LAWRENCE STREET
PLAN 4

DRAWING NO. TCI-QUEENSCLIFF RD- SHARED PATH-CONCEPT1-0004

REVISION: 1



- THE POSITION OF SERVICES SHOWN ON THE DRAWING ARE INDICATIVE ONLY AND HAVE BEEN PLOTTED FROM PLANS SUPPLIED BY THE RELEVANT UTILITY AUTHORITIES.
- PITS, POLES, MARKER POSTS, SIGNS, ETC. HAVE BEEN PLOTTED ON THE DRAWINGS WHERE SIGHTED AT THE TIME OF SURVEY BUT THE SURVEY DOES NOT INCLUDE INVESTIGATION OR LOCATION OF UNDERGROUND INFRASTRUCTURE.
- THE RESPONSIBILITY OF THE CONTRACTOR PRIOR TO ANY DEMOLITION, EXCAVATION, OR CONSTRUCTION ACTIVITY ON OR ADJACENT TO THE SITE TO OBTAIN UPDATED SERVICES DIAGRAMS THROUGH A DIAL-BEFORE-YOU-DIG SEARCH AND PHYSICAL SEARCH TO ESTABLISH AND CONFIRM THE EXACT LOCATION/S AND DEPTH/S OF ALL UNDERGROUND SERVICES, PRIOR TO COMMENCEMENT.

PINCH POINT AT POWER POLE.
REDUCE TO APPROX. 2.2m







REDUCE SHARED PATH WIDTH TO
APPROX. 2.2m TO RETAIN VEGETATION.
INSTALL SANDSTONE BLOCK EDGE.
TRIM BRANCHES AS REQUIRED.
(REFER TO DETAILS).



REMOVE CALLISTEMON
TO ACCOMMODATE SHARED PATH

**MAINTAIN EXISTING
FOOTPATH**

TRIM BRANCHES AS REQUIRED


LEGEND

- | | | | |
|---|---|---|---|
|  | NEW 2.5m WIDE CONCRETE FOOTPATH
100mm THICK 25MPa COMPRESSIVE
STRENGTH REINFORCED WITH SL72
MESH 30 TOP COVER PLAIN CONCRETE
BROOM FINISH |  | CONCRETE DRIVEWAY 130mm THICK
25MPa COMPRESSIVE STRENGTH
REINFORCED WITH SL72 MESH 30 TOP
COVER COVE FINISH PLAIN CONCRETE |
|  | NEW BUS STOP SLAB 130mm THICK
25MPa COMPRESSIVE STRENGTH
REINFORCED WITH SL72 MESH PLACED
30mm BELOW TOP OF PLAIN CONCRETE
SLAB |  | ASPHALT CORRECTION LAYER AC10
50mm THICK ON 150mm THICK DCB20 |
|  | NEW CONCRETE PRAM RAMP 25MPa
COMPRESSIVE STRENGTH COVE FINISH.
DARK TERRACOTTA OXIDE |  | NEW CONCRETE KERB AND GUTTER 150
HIGH (25MPa STRENGTH).
STEEL TROWEL FINISH. |

		LEVEL DATUM: AHD		PLOT DATE: 17/12/2020		FOLDER: V:\Urban2\DRAWINGS Current\Jana Rahman\2020-21\Footpath Program 2020-21\Queenscliff RD, Queenscliff\TCI-QUEENSCLIFF ROAD-SHARED PATH REGIONAL-IFC.dwg	
		CO-ORD SYSTEM: MGA**		DESIGN APPROVED		APPROVED FOR CONSTRUCTION	
		SURVEYED/DATED: LTS/10/06/20		DRAWN BY: F. RAHMAN		 1:20 @ A3 1:20 @ A1	
		WORK-AS-EXECUTED		DESIGNED BY: F. RAHMAN		 1:40 @ A3 1:40 @ A1	
		DATE: 30/10/20		DATE: (**/**/)**		 1:100 @ A3 1:100 @ A1	
		BY: G. FARDELL		INITIATED BY: P. GRAY		APPROVED BY: T. LAU	
		DATE: 01/10/20		(TRAFFIC SECTION)		DESIGN MANAGER	
2 17/12/20		REVISED WITH COMMENTS FROM TRAFFIC		FR		 northern beaches council	
1 01/10/20		INITIATE DRAWINGS		FR		NEW SHARED PATH QUEENSCLIFF RD, QUEENSCLIFF FROM QUEENSCLIFF RD TO LAWRENCE STREET PLAN 8	
No DATE		AMENDMENTS		INITIALS		DRAWING NO. TCI-QUEENSCLIFF RD- SHARED PATH-CONCEPT1-0005	
						REVISION: 1	




CAUTION – SERVICES!!!!




- THE POSITION OF SERVICES SHOWN ON THE DRAWING ARE INDICATIVE ONLY AND HAVE BEEN PLOTTED FROM PLANS SUPPLIED BY THE RELEVANT UTILITY AUTHORITIES.
- PITS, POLES, MARKER POSTS, SIGNS, ETC. HAVE BEEN PLOTTED ON THE DRAWINGS WHERE SIGHTED AT THE TIME OF SURVEY BUT THE SURVEY DOES NOT INCLUDE INVESTIGATION OR LOCATION OF UNDERGROUND INFRASTRUCTURE.
- IT IS THE RESPONSIBILITY OF THE CONTRACTOR PRIOR TO ANY DEMOLITION, EXCAVATION OR CONSTRUCTION ACTIVITY ON OR ADJACENT TO THE SITE TO OBTAIN UPDATED SERVICES DIAGRAMS THROUGH A DIAL-BEFORE-YOU-DIG SEARCH AND PHYSICAL SEARCH TO ESTABLISH AND CONFIRM THE EXACT LOCATION/S AND DEPTH/S OF ALL UNDERGROUND SERVICES, PRIOR TO COMMENCEMENT.

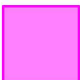
LEGEND




NEW 2.5m WIDE CONCRETE FOOTPATH
100mm THICK 25MPa COMPRESSIVE
STRENGTH REINFORCED WITH SL72
MESH 30 TOP COVER PLAIN CONCRETE
BROOM FINISH




CONCRETE DRIVEWAY 130mm THICK
25MPa COMPRESSIVE STRENGTH
REINFORCED WITH SL72 MESH 30 TOP
COVER COVE FINISH PLAIN CONCRETE




NEW BUS STOP SLAB 130mm THICK
25MPa COMPRESSIVE STRENGTH
REINFORCED WITH SL72 MESH PLACED
30mm BELOW TOP OF PLAIN CONCRETE
SLAB



ASPHALT CORRECTION LAYER AC10
50mm THICK ON 150mm THICK DCB20



NEW CONCRETE PRAM RAMP 25MPa
COMPRESSIVE STRENGTH COVE FINISH.
DARK TERRACOTTA OXIDE



K&G NEW CONCRETE KERB AND GUTTER 150
HIGH (25MPa STRENGTH).
STEEL TROWEL FINISH.



CAUTION – SERVICES!!!!

- THE POSITION OF SERVICES SHOWN ON THE DRAWING ARE INDICATIVE ONLY AND HAVE BEEN PLOTTED FROM PLANS SUPPLIED BY THE RELEVANT UTILITY AUTHORITIES.
- PITS, POLES, MARKER POSTS, SIGNS, ETC. HAVE BEEN PLOTTED ON THE DRAWINGS WHERE SIGHTED AT THE TIME OF SURVEY BUT THE SURVEY DOES NOT INCLUDE INVESTIGATION OR LOCATION OF UNDERGROUND INFRASTRUCTURE.
- IT IS THE RESPONSIBILITY OF THE CONTRACTOR PRIOR TO ANY DEMOLITION, EXCAVATION OR CONSTRUCTION ACTIVITY ON OR ADJACENT TO THE SITE TO OBTAIN UPDATED SERVICES DIAGRAMS THROUGH A DIAL-BEFORE-YOU-DIG SEARCH AND PHYSICAL SEARCH TO ESTABLISH AND CONFIRM THE EXACT LOCATION/S AND DEPTH/S OF ALL UNDERGROUND SERVICES, PRIOR TO COMMENCEMENT.

CONSTRUCT NEW KERB EXTENSION (2.25m FROM FOK) AND 7m WIDE LAY BACK

CONSTRUCT MEDIAN KERB ISLANDS (REFER TO DETAILS)

0.5m WIDE ASPHALT CORRECTION LAYER

1m

0.5m

0.50

0.50

3.00

4.20

RECONSTRUCT 3m x 4.2m BUS STOP SLAB (REFER TO DETAILS). RELOCATE EXISTING SEAT TO POSITION SHOWN

RECONSTRUCT DRIVEWAY AND NEW LAYBACK (REFER TO LONGITUDINAL SECTION)

CONSTRUCT CONTINUOUS FOOTPATH TREATMENT

REMOVE AND RECONSTRUCT KERB AND GUTTER AND MATCH INTO EXISTING DRAINAGE PIT

LEGEND

- NEW 2.5m WIDE CONCRETE FOOTPATH 100mm THICK 25MPa COMPRESSIVE STRENGTH REINFORCED WITH SL72 MESH 30 TOP COVER PLAIN CONCRETE BROOM FINISH
- CONCRETE DRIVEWAY 130mm THICK 25MPa COMPRESSIVE STRENGTH REINFORCED WITH SL72 MESH 30 TOP COVER COVE FINISH PLAIN CONCRETE
- NEW BUS STOP SLAB 130mm THICK 25MPa COMPRESSIVE STRENGTH REINFORCED WITH SL72 MESH PLACED 30mm BELOW TOP OF PLAIN CONCRETE SLAB
- ASPHALT CORRECTION LAYER AC10 50mm THICK ON 150mm THICK DCB20
- NEW CONCRETE PRAM RAMP 25MPa COMPRESSIVE STRENGTH COVE FINISH. DARK TERRACOTTA OXIDE
- NEW CONCRETE KERB AND GUTTER 150 HIGH (25MPa STRENGTH). STEEL TROWEL FINISH.

LEVEL DATUM: AHD		PLOT DATE: 17/12/2020		FOLDER: V:\Urban2\DRAWINGS Current\Jana Rahman\2020-21\Footpath Program 2020-21\Queenscliff Rd, Queenscliff\TCI-QUEENSCLIFF ROAD-SHARED PATH REGIONAL-IFC.dwg	
CO-ORD SYSTEM: MGA**		PRELIMINARY		APPROVED FOR CONSTRUCTION	
SURVEYED/DATED: LTS/10/06/20		DESIGNED BY: F. RAHMAN		PROJ. MGR: R. BRISKE	
WORK-AS-EXECUTED		DATED: 30/10/20		DATE: (**/**/20)	
2 17/12/20 REVISED WITH COMMENTS FROM TRAFFIC		INITIATED BY: P. GRAY		APPROVED BY: T. LAU	
1 01/10/20 INITIATE DRAWINGS		(TRAFFIC SECTION)		APPROVED BY: T. LAU	
FR		DATE: 01/10/20		PRINCIPAL ENGINEER	
FR		DESIGN MANAGER			
AMENDMENTS		INITIALS			

northern beaches council

NEW SHARED PATH
QUEENSCLIFF RD, QUEENSCLIFF
FROM QUEENSCLIFF RD TO LAWRENCE STREET
PLAN 9

DRAWING NO. TCI-QUEENSCLIFF RD- SHARED PATH-CONCEPT1-0007

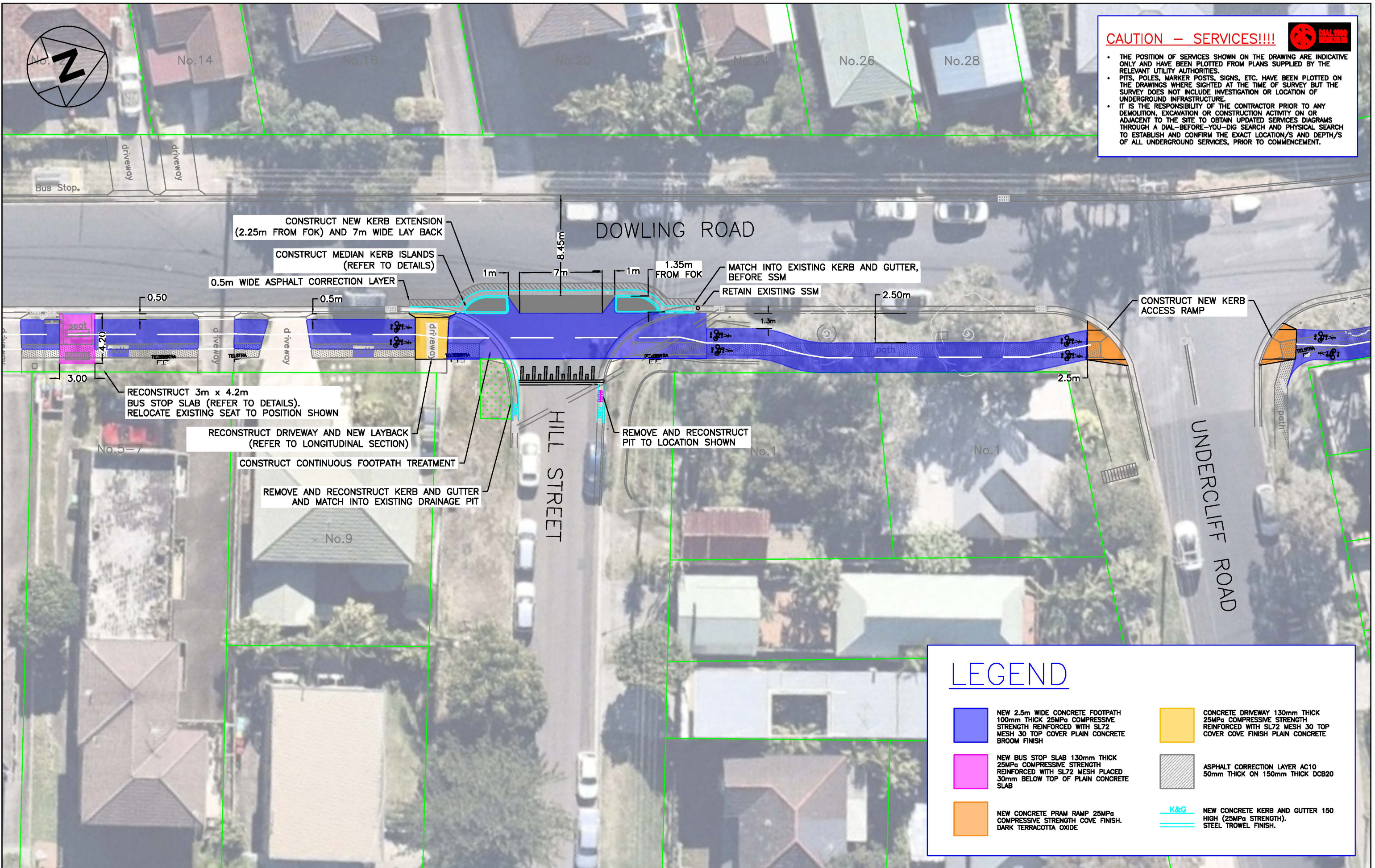
REVISION: 1









CAUTION – SERVICES!!!!



- THE POSITION OF SERVICES SHOWN ON THE DRAWING ARE INDICATIVE ONLY AND HAVE BEEN PLOTTED FROM PLANS SUPPLIED BY THE RELEVANT UTILITY AUTHORITIES.
- PITS, POLES, MARKER POSTS, SIGNS, ETC. HAVE BEEN PLOTTED ON THE DRAWINGS WHERE SIGHTED AT THE TIME OF SURVEY BUT THE SURVEY DOES NOT INCLUDE INVESTIGATION OR LOCATION OF UNDERGROUND INFRASTRUCTURE.
- IT IS THE RESPONSIBILITY OF THE CONTRACTOR PRIOR TO ANY DEMOLITION, EXCAVATION OR CONSTRUCTION ACTIVITY ON OR ADJACENT TO THE SITE TO OBTAIN UPDATED SERVICES DIAGRAMS THROUGH A DIAL-BEFORE-YOU-DIG SEARCH AND PHYSICAL SEARCH TO ESTABLISH AND CONFIRM THE EXACT LOCATION/S AND DEPTH/S OF ALL UNDERGROUND SERVICES, PRIOR TO COMMENCEMENT.



LEGEND

- | | |
|---|--|
|  NEW 2.5m WIDE CONCRETE FOOTPATH 100mm THICK 25MPa COMPRESSIVE STRENGTH REINFORCED WITH SL72 MESH 30 TOP COVER PLAIN CONCRETE BROOM FINISH |  CONCRETE DRIVEWAY 130mm THICK 25MPa COMPRESSIVE STRENGTH REINFORCED WITH SL72 MESH 30 TOP COVER COVE FINISH PLAIN CONCRETE |
|  NEW BUS STOP SLAB 130mm THICK 25MPa COMPRESSIVE STRENGTH REINFORCED WITH SL72 MESH PLACED 30mm BELOW TOP OF PLAIN CONCRETE SLAB |  ASPHALT CORRECTION LAYER AC10 50mm THICK ON 150mm THICK DCB20 |
|  NEW CONCRETE PRAM RAMP 25MPa COMPRESSIVE STRENGTH COVE FINISH. DARK TERRACOTTA OXIDE |  NEW CONCRETE KERB AND GUTTER 150 HIGH (25MPa STRENGTH). STEEL TROWEL FINISH. |

LEVEL DATUM: AHD		PLOT DATE: 17/12/2020		FOLDER: V:\Urban2\DRAWINGS Current\Jana Rahman\2020-21\Footpath Program 2020-21\Queenscliff Rd, Queenscliff\TCI-QUEENSCLIFF ROAD-SHARED PATH REGIONAL-IFC.dwg	
CO-ORD SYSTEM: MGA**		PRELIMINARY		DESIGN APPROVED	
SURVEYED/DATED: LTS/10/06/20		DRAWN BY: F. RAHMAN		DESIGNED BY: F. RAHMAN	
WORK-AS-EXECUTED		DATED: 30/10/20		DATE: (**/**/20)	
2 17/12/20 REVISED WITH COMMENTS FROM TRAFFIC		FR BY: G. FARDELL		APPROVED BY: T. LAU	
1 01/10/20 INITIATE DRAWINGS		FR DATE: 01/10/20		APPROVED BY: T. LAU	
No DATE AMENDMENTS INITIALS		INITIATED BY: P. GRAY (TRAFFIC SECTION)		DESIGN MANAGER	
				APPROVED FOR CONSTRUCTION	
				PROJ. MGR: R. BRISKE	
				DATE: (**/**/20)	
				APPROVED BY: T. LAU	
				PRINCIPAL ENGINEER	
				0 0.10 0.20 0.30 0.40 0.50 METRES 1:20 A3	
				0 0.2 0.4 0.6 0.8 1 METRES 1:40 A3	
				0 0.5 1.0 1.5 2.0 2.5 METRES 1:100 A3	
				1:20 A3 1:40 A3 1:100 A3	
				northern beaches council	
				NEW SHARED PATH QUEENSCLIFF RD, QUEENSCLIFF FROM QUEENSCLIFF RD TO LAWRENCE STREET PLAN 10	
				DRAWING NO. TCI-QUEENSCLIFF RD- SHARED PATH-CONCEPT1-0008	
				REVISION: 1	



CAUTION – SERVICES!!!!



- THE POSITION OF SERVICES SHOWN ON THE DRAWING ARE INDICATIVE ONLY AND HAVE BEEN PLOTTED FROM PLANS SUPPLIED BY THE RELEVANT UTILITY AUTHORITIES.
- PITS, POLES, MARKER POSTS, SIGNS, ETC. HAVE BEEN PLOTTED ON THE DRAWINGS WHERE SIGHTED AT THE TIME OF SURVEY BUT THE SURVEY DOES NOT INCLUDE INVESTIGATION OR LOCATION OF UNDERGROUND INFRASTRUCTURE.
- IT IS THE RESPONSIBILITY OF THE CONTRACTOR PRIOR TO ANY DEMOLITION, EXCAVATION OR CONSTRUCTION ACTIVITY ON OR ADJACENT TO THE SITE TO OBTAIN UPDATED SERVICES DIAGRAMS THROUGH A DIAL-BEFORE-YOU-DIG SEARCH AND PHYSICAL SEARCH TO ESTABLISH AND CONFIRM THE EXACT LOCATION/S AND DEPTH/S OF ALL UNDERGROUND SERVICES, PRIOR TO COMMENCEMENT.

LEGEND

- NEW 2.5m WIDE CONCRETE FOOTPATH 100mm THICK 25MPa COMPRESSIVE STRENGTH REINFORCED WITH SL72 MESH 30 TOP COVER PLAIN CONCRETE BROOM FINISH
- CONCRETE DRIVEWAY 130mm THICK 25MPa COMPRESSIVE STRENGTH REINFORCED WITH SL72 MESH 30 TOP COVER COVE FINISH PLAIN CONCRETE
- NEW BUS STOP SLAB 130mm THICK 25MPa COMPRESSIVE STRENGTH REINFORCED WITH SL72 MESH PLACED 30mm BELOW TOP OF PLAIN CONCRETE SLAB
- ASPHALT CORRECTION LAYER AC10 50mm THICK ON 150mm THICK DCB20
- NEW CONCRETE PRAM RAMP 25MPa COMPRESSIVE STRENGTH COVE FINISH. DARK TERRACOTTA OXIDE
- K&G NEW CONCRETE KERB AND GUTTER 150 HIGH (25MPa STRENGTH). STEEL TROWEL FINISH.

LEVEL DATUM: AHD		PLOT DATE: 17/12/2020		FOLDER: V:\Urban2\DRAWINGS Current\Jana Rahman\2020-21\Footpath Program 2020-21\Queenscliff Rd, Queenscliff\TCI-QUEENSCLIFF ROAD-SHARED PATH REGIONAL-IFC.dwg	
CO-ORD SYSTEM: MGA**		PRELIMINARY		DESIGN APPROVED	
SURVEYED/DATED: LTS/10/08/20		DRAWN BY: F. RAHMAN		DESIGNED BY: F. RAHMAN	
WORK-AS-EXECUTED		DATED: 30/10/20		DATE: (**/**/)**	
2 17/12/20 REVISED WITH COMMENTS FROM TRAFFIC		FR BY: G. FARDELL		APPROVED BY: T. LAU	
1 01/10/20 INITIATE DRAWINGS		FR DATE: 01/10/20		APPROVED BY: T. LAU	
No DATE AMENDMENTS INITIALS		INITIATED BY: P. GRAY (TRAFFIC SECTION)		DESIGN MANAGER	
				APPROVED FOR CONSTRUCTION	
				PROJ. MGR: R. BRISKE	
				DATE: (**/**/)**	
				APPROVED BY: T. LAU	
				PRINCIPAL ENGINEER	

NEW SHARED PATH
QUEENSCLIFF RD, QUEENSCLIFF
FROM QUEENSCLIFF RD TO LAWRENCE STREET
PLAN 11

DRAWING NO. TCI-QUEENSCLIFF RD- SHARED PATH-CONCEPT1-0009

REVISION: 1