

DESIGN INTENT

- A heritage inspired playspace that has strong connections to the harbour, local Aboriginal and Manly Gaswork history.
- Provide more inclusive, fun and challenging playspace for all ages and abilities, incorporating the following:
 - Junior, Senior, & Swing Areas
 - Interactive nature trail for children to enjoy.

Incorporating elements inspired by the local Aboriginal history and environment into the playspace for learning/play experience.

Aboriginal History

Pre 1788 The original Aboriginal occupants of Manly were saltwater people, reliant on the sea and harbour for a diet of fish and shellfish, as well as seabirds. They were at home on the waters as well as on land. The women especially were skilled canoeists and fisherwomen, paddling and fishing from bark nowie (canoe) with their children and babies, and a small fire on a clay pad to cook the catch.

Source: West Esplanade Heritage Activation Plan
HERITAGE REPORT November 2019 prepared by Northpoint Heritage PTY LTD

Early European Settlement History

MANLY GAS WORKS

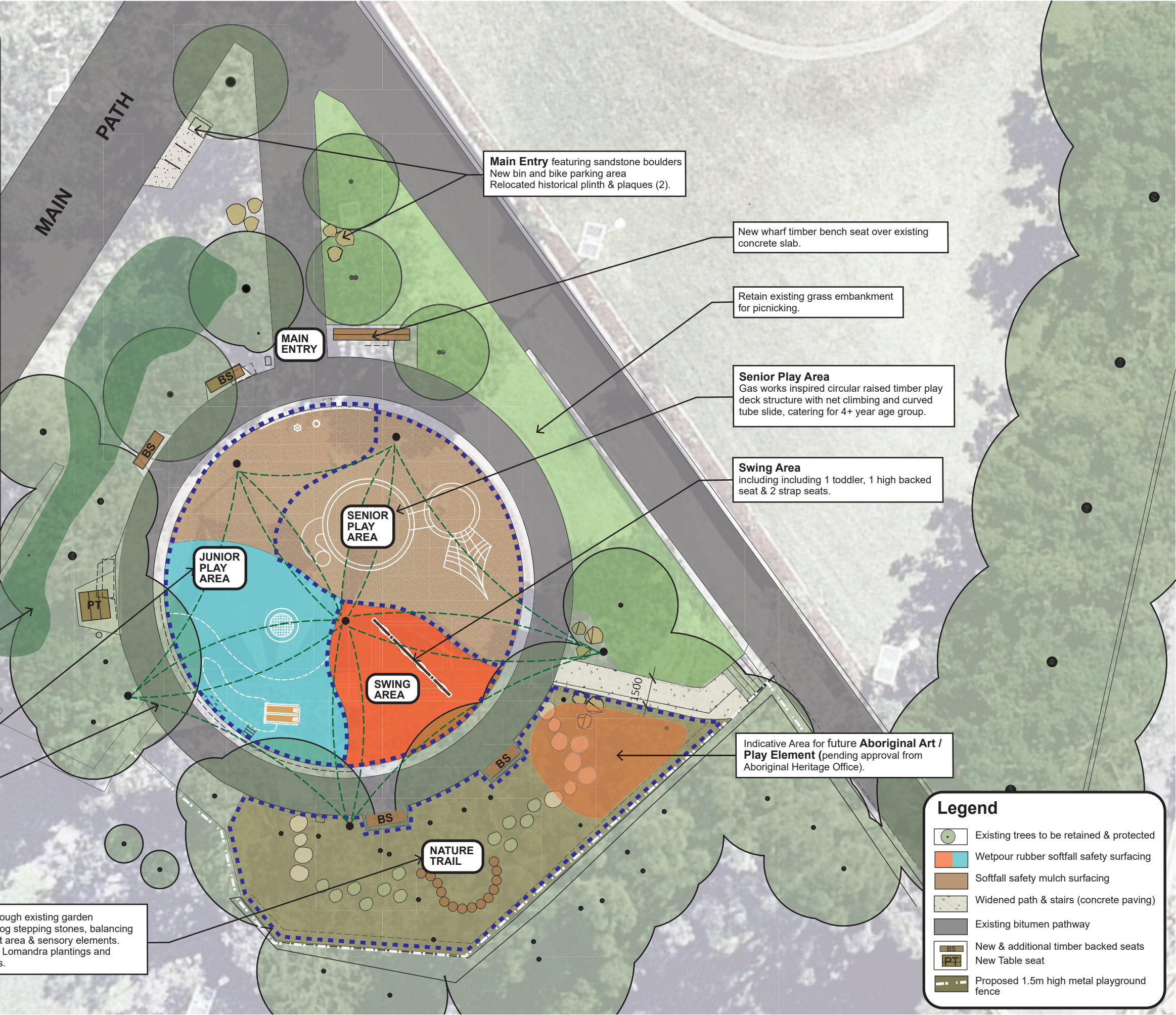


1884 "Little Manly Point, once an industrial site, is now a park. The Manly Gas Company's works originally produced gas here for anyone within five miles of Manly Post Office. Gas was used for lighting from 1884 and by 1923 there were 329 lights covering 30 miles of streets.



Sources: Manly Library Local Studies

1951 Caldare coaling at Gas Works Wharf ...the intention of the proprietor (Mr Murray) to establish a regular line of steamers at frequent intervals, of a first class character, at reduced fares, and to convert the lands adjoining the wharf into ornamental tea gardens, to form a seaside resort for those seeking the change and fresh air of Manly.



Legend

- Existing trees to be retained & protected
- Wetpour rubber softfall safety surfacing
- Softfall safety mulch surfacing
- Widened path & stairs (concrete paving)
- Existing bitumen pathway
- New & additional timber backed seats
- New Table seat
- Proposed 1.5m high metal playground fence

