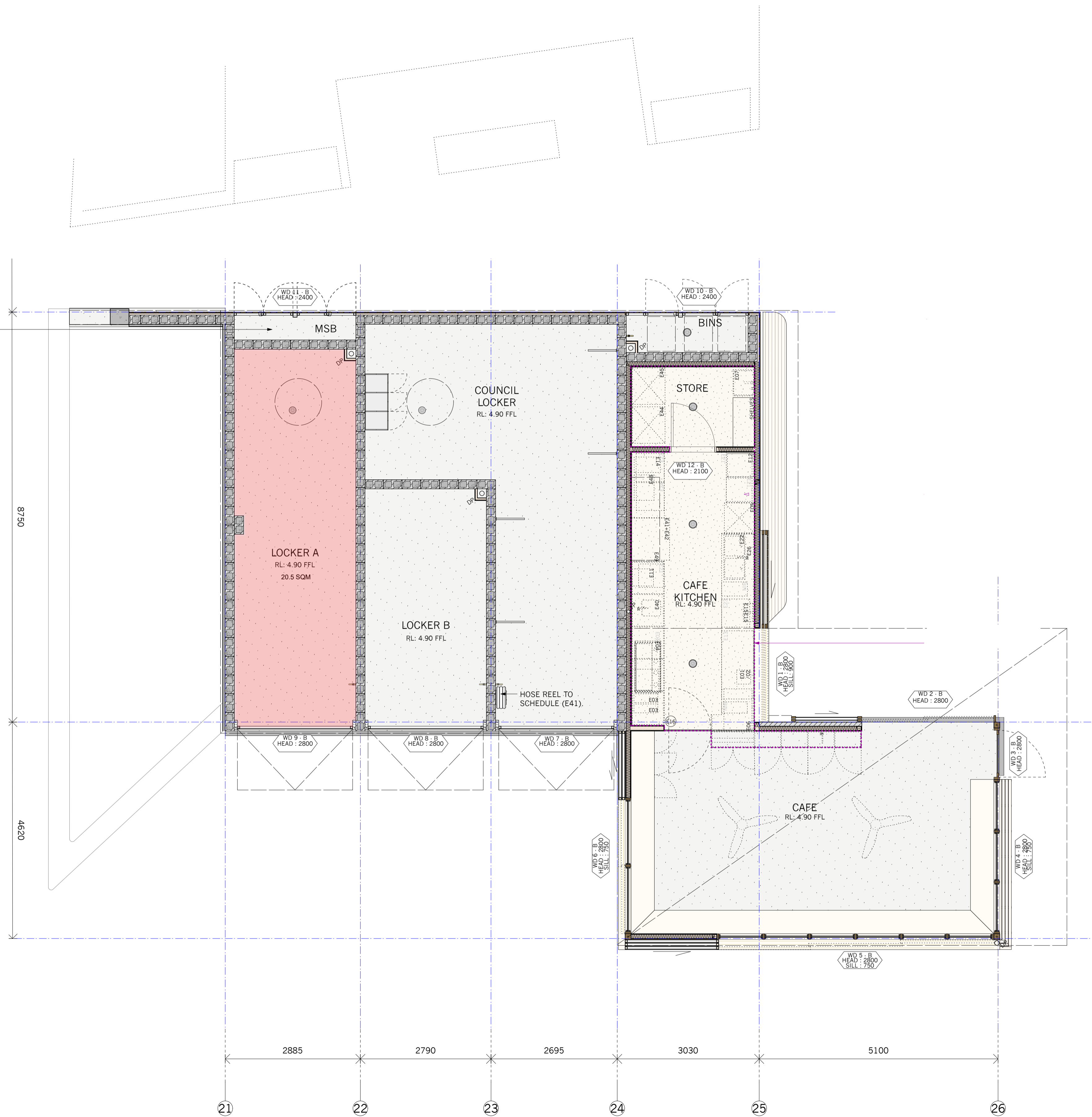


MSB TO ELECTRICAL ENGINEER'S SPECIFICATION. ENSURE SPACE IS CONSTRUCTED TO ACHIEVE FRL 120/120/120 AND ACCESS DOORWAYS ARE FITTED WITH A SELF CLOSING FIRE DOOR WITH AN FRL NOT LESS THAN -/120/30.



B 27/1/21 FOR CONSTRUCTION  
A 25/9/20 FOR TENDER  
ISSUE DATE REVISION

PROJECT  
The Proposed Renewal of  
Long Reef Surf Life Saving  
Club & Associated  
Community Facilities

LOT DP  
Lot 11, DP 1193189

CLIENT  
Northern Beaches Council

DWG  
Detail Plan | Building B |  
Ground Floor Plan

PROJECT #	DWG #
LRSC.01	2217
SCALE @ A1	1:50 REVISION
SCALE @ A3	1:100
DRAWN	MR DATE
CHRD	AP



NORTHERN BEACHES COUNCIL  
W: www.northernbeaches.nsw.gov.au  
P: 725 Pittwater Rd, Dee Why NSW 2099  
T: (02) 9942 2111



ADRIANO PUPILLI ARCHITECTS  
W: www.adrianopupilli.com.au  
E: info@adrianopupilli.com.au  
P: PO Box 770 Manly NSW 2095  
T: (02) 9114 6300

FOR CONSTRUCTION

NOTES:  
DO NOT SCALE OFF DRAWINGS. USE  
DIMENSIONS.  
A SURVEY IS REQUIRED TO ENSURE  
CORRECT RELATIONSHIP TO SITE  
BOUNDARIES.